



FIRST LUTHERAN

GOOD NEWS!

SEPTEMBER 2020

All of this and more on the web at www.FirstLutheranOnalaska.org

SEE ALSO...

- facebook.com/1stlu
- instagram.com/1stlu
- twitter.com/1stlu
- 1stlu.org/cal
- [#faithalive365](https://pinterest.com/firstlu)

INSIDE

- 2 OWLs
- 3 Readings for September
Sunday Morning with Coffee
Bible Readers
Faith Alive! U
- 4 Virtual Hunger Walk
Blood Drive
- 5 First Lutheran Get-Away at
Sugar Creek Bible Camp
- 6 Finance & Stewardship Report
- 7 Foundation Committee
Serve & Give
- 8 Announcements
- 9 Preschool Update
- 10 Confirmation
Sunday School
- 11 Calendar
- 12 Shared & Posted
- 13 Staff Directory

MESSAGE FROM PASTOR STANTON



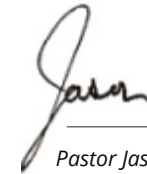
HOW WILL YOU engage in faith formation this fall? Stop reading the rest of this newsletter until you have an answer. "I don't know" is acceptable, in which case I hope you read the *entire* newsletter for lots of ideas!

In-person outdoor worship is happening. Check our website to see exactly when and where the next outside service is taking place. Each weekday, many of us are reading the Bible together. This month we're in Leviticus and Numbers, Matthew and Luke. First Fest is September 13 when we'll have Sunday School registration and so much more. The weekend of September 18-20, we will be having our first annual "First @ Sugar Creek Bible Camp" event. Some families may camp Friday and Saturday night while others may come just for a day or two or just part of one day. There will be campfires each night. Food is prepared and cleaned up by Sugar Creek staff. And we'll celebrate communion together Sunday morning. All ages and stages are welcome for any or all of it! Sunday School, Confirmation, Faith Alive! U, OWLs... we're ramping everything back up. And I sincerely hope you will share any idea that comes to you so that we can engage

COVID-19 limits us in ways that challenge us. But we also have opportunities to grow in ways we haven't before.

our whole membership in creative ways this fall and beyond.

COVID-19 limits us in ways that challenge us. But we also have opportunities to grow in ways we haven't before. Consider how you may want to engage in your faith life. Become a Faith Alive! storyteller, a confirmation guide or read the Bible with us. There are all kinds of ways to offer your gifts to what we're doing and to receive the mercy of God. Especially during a time that challenges us all so much.



Pastor Jason Stanton
jason@firstlu.org

MESSAGE FROM PASTOR KARYN

"When pain of the world surrounds us with darkness and despair, when searching just confounds us with false hopes ev'rywhere, when lives are starved for meaning and destiny is bare, we are called to follow Jesus and let God's healing flow through us."

Jim Strathdee — When Pain of the World Surrounds Us, hymn #704



I REMEMBER COMING across this hymn shortly after the death of George Floyd. It has been there, in our hymnal, for 15 years and yet, I don't remember ever singing it or reading the words and having them so profoundly resonate with me. That is the way of things, though. The words of the faithful sometimes move

Continues on page 2



Hope this newsletter finds all of the OWLs safe, healthy and enjoying the nice summer weather. We have had seven virtual potlucks on Zoom. In addition to getting caught up and hearing everyone's good news, we have been playing games. Brian has modified the rules of some popular games. Brian is also working hard to find

live speakers that will present on Zoom for some of our future programs. So if you are looking for excitement beyond the same four walls and the drive-up at Culver's, come join the OWLs for the next OWLs Virtual Potluck.

The next one will be on Wednesday, Sept. 16, at 1pm.

The Zoom information will be emailed to the OWLs mailing list shortly before the meeting. If you are not receiving OWLs emails, please contact Brian Narveson at bcnarveson@gmail.com or 630.816.5917, and he will add

you to the email list or provide connect information over the phone. You can join all the Zoom calls with just a regular phone if you do not have a computer or smart phone. If you need help figuring out how to connect to Zoom or view the church services, please feel free to contact Brian for assistance.

The OWLs are a group at First that welcomes anyone, First Lutheran members or not, who are 55+. For information or to ask questions, contact Brian at owls@firstlu.org.

First Lutheran Church
410 Main St.
Onalaska, Wisconsin 54650
608.783.2236
Fax: 608.783.3741

office@firstlu.org
www.FirstLutheranOnalaska.org

WORSHIP SCHEDULE

Live streaming at 1stlu.org/live
Sundays Sept. 6 9:15am
Starting Sept. 13
8am & 10:30am
Wednesdays 6:15pm

SUBMITTING NEW ANNOUNCEMENTS

To have your announcement in the monthly newsletter, send it to newsletter@firstlu.org, or give it to Andy in the office. **Deadline for the newsletter is always noon on the 15th of the month.**

To have your announcement in the weekly announcements pages handed out each weekend, send it to announcements@firstlu.org, or give it to Andy in the office. **Deadline for the weekly announcements is always noon each Wednesday.**

First Lutheran is a congregation of the Evangelical Lutheran Church of America (ELCA)



FROM PASTOR KARYN, CONT. FROM PAGE 1

This hymn reminds me of what is important to me and to the one I follow, and something in me takes a deep breath, sinks into God's love and then gives me clarity on my next move.

right by us and other times, strike us down with their profundity. There is no doubt in anyone's mind (I hope) that there is darkness and despair surrounding us—we feel it ourselves, and we see it in others. There seems to be a deficit of hope, and with so many questions with so few answers, finding meaning and understanding seems like a fool's journey. So what is a faithful person to do?

I have learned over years of studying human behavior, that the thing we do when faced with difficult decisions or life moments, is to go back to our values, those things that define and shape us. That is what I think is so powerful about this hymn, each verse reminds us that we are followers of Jesus—and that life has pretty concrete values attached to it. When I sing or read the words of this hymn, I am reminded of what is important to me and to the one I follow, and something in me takes a deep breath, sinks into God's love and then gives me clarity on my next move. It is both grounding and

freeing all at the same time—it diminishes my anxiety every single time.

So faithful ones, when you look around you at the world and don't know what to do, breathe in the love of Jesus and remember our value to love God and love people. Trust the one who calls us their children and look around with fresh eyes.

Pastor Karyn Bodenschatz
karyn@firstlu.org

SUNDAY MORNING WITH COFFEE

Sundays
9:15-10:15am
starting Sept. 20.
We will discuss
questions and
thoughts from the
previous weeks
Bible Readers
readings. Join us
when you can.
We will meet
virtually via Zoom
when we can't
meet in person.

Email
bridget@firstlu.org
to get the Zoom link
or get help
connecting to Zoom.



READINGS FOR SEPTEMBER

Wed, Sept. 2: Luke 24: 13-35
Sun, Sept. 6: Matthew 18: 15-20
Wed, Sept. 9: John 3: 13-17
Sun, Sept. 13: Matthew 18: 21-35
Wed, Sept. 16: Genesis 2: 4b-7, 15-17, 3: 1-8
Sun, Sept. 20: Matthew 20: 1-16
Wed, Sept. 23: Genesis 15: 1-6
Sun, Sept. 27: Matthew 21: 23-32
Wed, Sept. 30: Genesis 37: 3-8, 17b-22, 26-34; 50: 15-21

Above are the tentative readings scheduled for September. Readings used during worship are determined by the pastors on a weekly basis, and, therefore, are subject to change.

You can also view this list online and subscribe to receive them as an email at 1stlu.org/readings.

READ THE BOOK OF NUMBERS IN 14 DAYS!

Did you know Exodus has a sequel? It's the book of Numbers! And in it you'll read the stories of manna from heaven, and following God in the form of a pillar of cloud and fire. Pastor Stanton will be introducing this book to Bible Readers **starting Wednesday, Sept. 9.**

READ THE GOSPEL OF LUKE IN 28 DAYS!

The gospels are the story of Jesus, so what is Luke's take on this story? It is this: the Messiah is good news for ALL people and ALL of creation. Pastor Stanton will be introducing this book to Bible Readers **starting Wednesday, Sept. 16.**

These studies are for ANYone who can read, 3rd graders to our eldest friend; members and acquaintances far far away. *Use whatever Bible you'd like! Follow Pastor Stanton's daily guides on Facebook or YouTube, and if you'd like the daily video guides emailed to you contact Pastor Stanton at jason@firstlu.org*

**FAITH
ALIVE! U**

First offers courses for all ages to explore, question and learn about your faith.

Lutherans' Civic Responsibility and Voting

Cindy Crane
Sunday, Oct. 11, 6pm

Why does the ELCA encourage us to vote? What does public policy have to do with being Lutheran? Even if you aren't old enough to vote yet, you can be involved. Attend to find out how, and other questions will be addressed by Cindy Crane, Director of Lutheran Office for Public Policy in Wisconsin. The format will be 20 minutes of presentation and 20 minutes of question and answer. This event is intended for confirmation students, high schoolers and all adults.

First Lutheran Onalaska Blood Drive

Be a Beacon of Hope

SEPTEMBER

8

TUES, 12:30–5:30pm

Walk-ins welcome,
appointments encouraged:
schedule at 1stlu.org/blooddrive

Remember to bring ID & mask



Questions? Contact Diane Shuda: 608.386.4270



There is room for you!
Meeting via Zoom
Wed. mornings
7:30am

Questions? Contact:
karyn@firstlu.org



COULEE REGION HUNGER WALK IS GOING VIRTUAL!

Last year, with your help we raised over \$14,000, which went directly to agencies in our community and around the world addressing food insecurity. The impact of COVID-19 on jobs and our economy will put even more of our families at risk for hunger. So the need for our fundraising efforts is even greater this year. Would you be willing to walk, run or bike to help families in the Coulee Region?

WAFER and Hunger Task Force will each receive 30% of the funds raised. You can name another food relief agency to receive the remaining 40%. **We are planning a walk/run/bike to be held Oct. 4 through Oct. 11.**

Participate on your own or form a team.
Prizes will be awarded.

More details at: couleeregionhungerwalk.org

Even if you don't want to walk, bike or run,
your donation will be appreciated.

See bridget@firstlu.org with questions.



Sugar Creek Bible Camp's **ANNUAL QUILT and ANTIQUE AUCTION**

SATURDAY - SEPT 12, 2020

QUILT and ANTIQUE AUCTION: 10 a.m. – 2 p.m. *(in person and online)*
COUNTRY STORE: 8 a.m. – 2 p.m.
OUTDOOR CRAFT FAIR: 9 a.m. – 2 p.m.

Beautiful Quilts, Antiques, Sports Memorabilia – Packers, Brewers, etc.,
Crafts, Furniture, Paintings, Gift Baskets & so much more!
*Quilts and many valuable items received at the camp by September 1
will be available for **online** bidding ~ **September 4-11** and in-person at the Auction.*
Great BBQ pork lunch, homemade pies, potato salad, delicious treats
Country Store will be open with a wide variety of rummage items!
Silent Auction for Gift Themed Baskets until 1pm.
Outdoor Craft Fair featuring the best of our local Artisans runs throughout the day!

Virtual 5K RUN/WALK – any time **September 5-13**

Visit our website www.sugarcreekbiblecamp.org for details and a link to sign up for the 5K.

Come enjoy a beautiful day at camp, or participate online, and help
support the ministries of Sugar Creek!

*Covid 19 best practices will be in place: social distancing of at least 6 feet, hand washing and
sanitizing, and mask wearing during times of close proximity, or while indoors.*

Please contact the camp if you have quality items to donate or if you have questions.

Sugar Creek Bible Camp

13141 Sugar Creek Bible Camp Rd, Ferryville, WI 54628 Phone: 608-734-3113 Email: camp@sgrcreek.org

SUGAR CREEK VIRTUAL 5K

The Sugar Creek Bible Camp Trail Run is going virtual this year! Virtual races happen all the time and allow you to join the fun without the crowds and while still supporting a great local outdoor camping ministry! Run, walk, bike or hike your 5k route as a fundraiser for Sugar Creek Bible Camp. We don't care how you do it, or where your 5K takes place. Print out your digital bib number, and run, walk, bike or hike 3.1 miles **anytime between Saturday, Sept. 5, and Sunday, Sept. 13.** Fun for the whole family! Post your results with a picture on the Sugar Creek Bible Camp Facebook page with #sugarcreekfunrun #sugarcreekbiblecamp for your chance to win some fabulous gift cards! *Sign up at 1stlu.org/scbc5k.*

FIRST LUTHERAN

PLAY DAYS

AT SUGAR CREEK, SEPT. 18-20

First Lutheran will have Sugar Creek Bible Camp all to ourselves the weekend of Sept. 18-20! All ages and stages are welcome to camp one or two nights, or just come for a day. We'll use the same precautions that were used at camp all summer so that we can enjoy each other and a beautiful setting while feeling safe and having fun. Creek stomping, disc golf and horse rides by day... campfires, s'mores and more by night. The weekend concludes with a safe, outdoor worship service Sunday morning. Come for any or all of what might become an annual event!
Online registration coming soon.



AS MEMBERS OF First Lutheran Church and through our financial gifts, we commit to bringing people into a relationship with Jesus Christ. Through

our unique place in our community and the size of our congregation, we are able reach out to people of all ages to make more disciples of Christ. A significant outreach during the pandemic is our streaming of Sunday and Wednesday services. A very key and uplifting part of the services is the work of our dedicated musicians. Led by Todd and Gabe, the praise band, pastors, volunteer musicians and singers raise our spirits, praise God and encourage active singing participation at home. We are blessed to have such talent and dedication in our congregation. We look forward to the possibility of seeing you in person at outside services in September. Thank you for your support of our music ministry through your regular giving General Fund giving for Operations

We look forward to the possibility of seeing you in-person at outside services in September.

(not including the capital campaign and preschool) as of July 31, 2020, was \$332,894. Budgeted receipts were \$333,183 leaving a deficit of only \$289. This is fantastic considering we are in the summer months. Thank you to everyone for your continued generosity. If you are not already, please consider regular giving via Simply Giving, which can provide the resources to expand our ministry to Change Lives. If you are already participating in Simply Giving, thank

you. To enroll call the church office or sign up at 1stlu.org/giving.

Capital Campaign update: It is great to report we have received over \$905,000 of the pledged income for the capital campaign. Work on the sanctuary roof is complete. Thank you for continuing to meet your pledge and considering an extra gift. Look for an exciting update on the Capital Campaign during First Fest. Full financial details are available by request in the church office. In normal times, we welcome everyone to attend a finance committee meeting. We meet every month, on the second Wednesday, at noon. The Stewardship Committee meets once a month and is looking for members. For meeting times, contact Pastor Stanton.

Faithfully submitted,

The Finance and Stewardship Committees

- CAP CAMPAIGN UPDATE**
- PLEGGED DOLLARS:**
- \$1,058,518**
- GIFTS RECEIVED:**
- \$905,000**
- PROJECTS COMPLETED:**
- HVAC CONTROLS**
- ED BUILDING ROOF**
- PARKING LOT REPAIRS**
- TREES REMOVED**
- WIFI UPGRADE**
- FIRE ALARM SYSTEM**
- 3 AC UNITS REPLACED**
- SANCTUARY AUDIO UPGRADE**
- SANCTUARY ROOF**



THE MABEL ANDERSON Scholarship falls under the Foundation Committee's responsibilities. This spring, the committee awarded nine scholarships to area high school seniors, who are now on their way to starting college. Those awarded scholarships for the 2019-2020 school year are as follows: Joshua Peyer, Jillian Reitzel, Jacob Breiling, McKenzie Marcon, Elizabeth Peterson, Nathan Alberts, Hunter Robison, Brooke Visker and Nick Pica.

Part of the scholarship application requirement for each student is to write an essay that includes what educational institution they plan to attend and what they plan to study and how has their involvement within the church helped to prepare them for their continued education.

There is an amazing passion that is present in each of the essays that these students have written. We would like to share some excerpts from some of their essays that show you just how amazing these students are.

This month we will focus on three of the recipients and share information about the rest of the scholarship winners in the upcoming months.

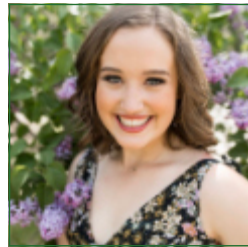


HUNTER ROBISON plans to attend the University of Wisconsin—Eau Claire to study French Education. His involvement with the church (specifically a

mission trip that he attended in Louisville, Kentucky) helped him realize that he wanted to work with people and teach them in some way or form. He writes, "...I intend to attend church

As these students begin their journey to post-secondary education, we want them to know that they are in our prayers and wish them success and they feel God's presence as they begin their first semester.

and if people at my church only speak French, I can translate for them..."



JILLIAN REITZEL is attending Hope College in Michigan to study biology and dance on the pre-med track. Her involvement in church has taught

her a lot about herself and how much she loves to serve and help others. She states, "...Jesus loved every person no matter who they were and growing up in such a loving ELCA church, I have learned these essential qualities that will allow me to succeed in healthcare."



JACOB BREILING will attend the University of Wisconsin—Madison to study finance. He writes, "As I pursue finance with the end goal of becoming a financial advisor my faith will help me make the correct decision morally and ethically in the workplace. I will treat others how I have been taught to do so by Jesus in the way that I want to be treated. Since I have been baptized, confirmed, completed Peer Ministry and spent my whole life as an active member of the congregation, I know that I will have the support of the entire church as I move on into college and then eventually into the workforce while growing in my faith the entire way."

As these students begin their journey to post-secondary education, we want them to know that they are in our prayers and wish them success and they feel God's presence as they begin their first semester.

GO AND DO
LIKEWISE LUKE 10:37

CONFIRMATION GUIDES

You don't need to know the Bible backwards & forwards & you don't need a seminary degree. Just a heart for the youth of our church and an hour each week to spend with our confirmation youth. Parents, grandparents, godparents or any faith-mature adult is welcome to facilitate conversation and build relationships between our confirmands on Wednesday nights. Contact Pastor Stanton to nominate someone: jason@firstlu.org.



If you know of someone who needs a caregiver, speak with Pastor Karyn (karyn@firstlu.org) or call the church office (608.783.2236).

SUNDAY WORSHIP CHANGING BACK

Starting **Sunday, Sept. 13**, worship times will be as follows: first service at 8am, and second service at 10:30am. The plan right now is to live stream both services; it has yet to be decided if the 10:30am service will be outdoors (and open to all) or indoors (and limited to staff and volunteers).

BAPTISMAL PREPARATION

The pastors are considering baptisms on an individual basis. *To register or ask questions contact the church office at 608.783.3326 / office@firstlu.org.*

HAPPY BIRTHDAY!!

If you have received a birthday postcard from First in the last several months and still have it, bring it into church Mon–Fri, 8am–4pm and pick up a small gift. Remember to ring the doorbell on the left side of the doors and Tamara will be happy to help you.

OPENING AT ENGLISH LUTHERAN

English Lutheran Church in La Crosse is hiring a full-time Director Youth & Family Ministries. *Questions may be directed to Pastor Becky Goche (pastorbecky@englishlutheran.org) or call her at English's office at 608-784-9335.*

WE CELEBRATE THE GIFT OF HOLY BAPTISM

- **Tucker Alan Heiden**, son of Nathan & Erin Heiden

WEDDINGS

God's blessings to...

- **Madeline Davidson & James Didier**
- **Morgan Anderson & Justin Jacques**

CHRISTIAN SYMPATHY TO THE FAMILY & FRIENDS OF:

- **Helen Pedersen**
- **Helen Renstrom**
- **Phyllis Christianson**
- **James "Gus" Sires**

HOSPITAL REMINDERS

For Gundersen: be sure to alert the hospital of your church affiliation when they ask, and they will release your name to us when we call.

For Mayo/Franciscan Healthcare: it is important that you or a family member contact us at the church office: 608.783.2236. Mayo no longer lets churches know who is a patient at their hospital.

SUBMITTING NEW ANNOUNCEMENTS

To have your announcement in the monthly newsletter, send it to newsletter@firstlu.org, or give it to Andy in the office. Deadline for the newsletter is always **noon on the 15th of each month.**

To have your announcement in the weekly announcements pages handed out each weekend, send it to announcements@firstlu.org, or give it to Andy in the office. Deadline for the weekly announcements is always **noon each Wednesday.**

GO GREEN

We offer two e-mail lists for subscribing:

First Lutheran Publications: which includes e-mail links to our e-newsletter, so if you request to stop receiving this paper in your hands, this will save natural resources, and helps First save money on supplies and postage.

First Lutheran Updates & Publications: all of the above plus several updates from our website.

To subscribe to either one and to cancel the delivery of this paper copy, simply visit 1stlu.org/subscribe and fill out the online form, or contact the office at office@firstlu.org.

SCRIP CARDS ARE STILL AVAILABLE
 Scrip cards are still available from the church office even though the building is closed. We have Kwik Trip, Woodman's, Target and Festival cards. To find out what's currently available and when you can buy them, call the church office at **608-783-2236** or send email



Preschool Update

We are now enrolling for in-person preschool starting Sept. 1.

We have spots open in our Tues/Thur class and our Mon/Wed/Fri class.

For details visit 1stlu.org/preschool and email [preschool@firstlu.org!](mailto:preschool@firstlu.org)

FIRST LUTHERAN PRESCHOOL

410 Main Street, Onalaska, WI 54650 608.779.4504 •
preschool@firstlu.org
Preschool Director: Melissa Rolbiecki
4K Teacher: Beth Miller
Preschool Assistant Teachers:
Marci Leppert, Tracy Stoll



First invites everyone on First Fest Sunday to sign-up for the following ministries...

Sunday School

more info on page 10

Sunday Morning with Coffee

more info on page 3

First Lutheran Get-Away at Sugar Creek, Sept. 18-20

more info on page 5

Virtual Hunger Walk, Oct. 4-11

more info on page 4

Also check out...

Parenting During Virtual Time

First Lutheran is taking many steps to change the way we serve children and families. We know many people are learning to balance work, childcare, home-based teaching, and parenting, in this whole new world. Let's make time to be together to focus on how we can intentionally parent during worship, confirmation, Sunday School and make it to the other side of this pandemic having grown in faith!

Join Carla Stanton to discuss tips, strategies and building up your resources for raising your children in faith on First Fest Sunday,

Sept. 13, Sunday at 9:15am.

Stay tuned for more information on the format.

Sunday School

in a box

Register for Sunday School in a Box!

This is First Lutheran's way of handling the pandemic & Sunday School. Do as much as you can including crafts, games, cooking, music, science, devotionals, verse and video! All you need to do is to register during the designated time by going to 1stlu.org/sundayschool and then you will pick up your box on the pick up day!

Register Sept. 13–20 for “Creation”

Pick up box Sept. 26
Week 1: Sept. 27
Week 2: Oct. 4
Week 3: Oct. 11
Week 4: Oct. 18
Week 5: Oct. 25

Register Oct. 18–25 for “Fruit of the Spirit”

Pick up box Oct. 31
Week 1: Nov. 1
Week 2: Nov. 8
Week 3: Nov. 15
Week 4: Nov. 22

Register Nov. 15 for for Advent Around the Table

Pick up box on Nov. 28
Advent Around the Table: Nov. 29

Register Nov. 22–29 for “Christmas”

Pick up Box Dec 5
Week 1: Dec. 6
Week 2: Dec. 13
Week 3: Dec. 20
Week 4: Dec. 27

GOING FIRM ATION

Events subject to change; up-to-date info at 1stlu.org/confirmation

Teen-relevant, age-appropriate, active, modern, and theologically sound

UPCOMING CONFIRMATION EVENTS

Sunday, Sept. 20
Gr 6 & 7 Confirmation Classes Begin

Wednesdays, 7pm, starting Sept. 23
Gr 8–10 Small Groups

Sunday, Oct. 11, 6pm
Faith Alive! U: Lutherans' Civic Responsibility and Voting



SEPTEMBER AT FIRST LUTHERAN see also weekly events list on back

Sunday	Monday	Tuesday	Wednesday	Thursday	Friday	Saturday
<p>AUGUST</p> <p>1 2 3 4 5 6 7 8 9 10 11 12 13 14 15 16 17 18 19 20 21 22 23 24 25 26 27 28 29 30 31</p>	<p>OCTOBER</p> <p>1 2 3 4 5 6 7 8 9 10 11 12 13 14 15 16 17 18 19 20 21 22 23 24 25 26 27 28 29 30 31</p>	<p>1 7 PM Stephen Ministry - Zoom Mtg</p>	<p>2 6 AM Courageous Men 7:30 AM Coffee With Pastor Karyn - Zoom 8:30 AM Clothes Closet Planning Meeting 6:15 PM Worship Live Stream 7 PM Gr 10 Confirmation Orientation - Zoom</p>	<p>3 7 PM AA - FS</p>	<p>4</p>	<p>5</p>
<p>6 9:15 AM Worship Live Stream</p>	<p>7 Labor Day (office closed) 7 PM AA - FS</p>	<p>8 12:30 PM Blood Drive - NX 7 PM Executive team</p>	<p>9 6 AM Courageous Men 7:30 AM Coffee With Pastor Karyn - Zoom 12 PM Finance Team Mtg 6:15 PM Worship Live Stream</p>	<p>10 7 PM AA - FS</p>	<p>11 9:30 AM Drawing From the Well - Zoom 10 AM Sugar Creek Annual Quilt and Antique Auction</p>	<p>12</p>
<p>13</p>	<p>14</p>	<p>15</p>	<p>16</p>	<p>17</p>	<p>18</p>	<p>19</p>
<p>Sunday School Registration</p>						
<p>First Fest</p> <p>8 AM Worship Live Stream 9:15 AM Fellowship - Zoom 10:30 AM Worship Live Stream</p>	<p>6:30 PM Foundation Team 7 PM AA - FS</p>	<p>Deadline for Newsletter</p> <p>5:15 PM Personnel Team Mtg 6:30 PM Property Management Team Mtg - NX</p>	<p>6 AM Courageous Men 7:30 AM Coffee With Pastor Karyn - Zoom 6:15 PM Worship Live Stream</p>	<p>Clothes Closet Anniversary of Firs...</p> <p>1 PM Grief Support Group - Phone Tree</p>	<p>First Lutheran Play Days at Sugar Creek</p> <p>7 PM AA - FS</p>	
<p>20 Sunday School Registration First Lutheran Play Days at Sugar... Gr 6 & 7 Confirmation Classes F...</p> <p>8 AM Worship Live Stream 9:15 AM Fellowship - Zoom 9:15 AM Sunday Morning with Coffee - Zoom 10:30 AM Worship Live Stream</p>	<p>21 7 PM AA - FS</p>	<p>22 7 PM Vision & Leadership Team Mtg</p>	<p>23 Blessing Confirmation Leaders &... Gr 8, 9 & 10 Small Groups First...</p> <p>6 AM Courageous Men 7:30 AM Coffee With Pastor Karyn - Zoom 6:15 PM Worship Live Stream 7 PM Gr 8 & 9 Small Groups 7 PM Gr 10 Confirmation</p>	<p>24 7 PM AA - FS</p>	<p>25</p>	<p>26</p>
<p>27 8 AM Worship Live Stream 9:15 AM Fellowship - Zoom 9:15 AM Sunday Morning with Coffee - Zoom 10:30 AM Worship Live Stream</p>	<p>28 7 PM AA - FS</p>	<p>29</p>	<p>30 6 AM Courageous Men 7:30 AM Coffee With Pastor Karyn - Zoom 6:15 PM Worship Live Stream 7 PM Gr 8 & 9 Small Groups 7 PM Gr 10 Confirmation</p>	<p>1 7 PM AA - FS</p>	<p>2</p>	<p>3</p>

weekly events for

SEPTEMBER

at First Lutheran

SUNDAYS

8:00am Worship Live Stream, *starting Sept. 13*

9:15am Sunday Mornings with Coffee, *starting Sept. 20*

10:30am Worship Live Stream, *starting Sept. 13*

TUESDAYS

1:15pm Staff Meeting

WEDNESDAYS

6:00am Courageous Men - House

7:30am Coffee w/ Pastor Karyn - Panera, Onalaska

6:15pm Worship Live Stream

SHARED & POSTED

Thought we'd share some of the kind comments we've been receiving, via social, email and those faithful stamped envelopes.

From Erin & Nate: If you could just let the pastors, staff, and council know that Nate & I think they're doing a great job that is so difficult right now. They're having to navigate waters I don't think anyone could have ever imagined we'd have.

From Steve & Shirley: Thank you kindly for all of the movie treats. What a cute idea!! Hope we can be with all of you again, soon!

From Howard: We were surprised to find the movie bucket on our porch. What a thoughtful touch for the circumstances.

From John: Greetings and blessings to you all. What a clever idea and such a unique gift for us all. Thank you very much. It's nice to be appreciated and I surely appreciate you all as well.

From Ginny & Clay: Thank you FLC. Thank you, Andy. Thank you pastors: Jason and Karyn. Thank you Praise Band. Thanks to all who make this at-home worship possible. It takes a village. Prayers of thankfulness to our God to all of you who make this worship possible.

CALENDAR KEY

CR = Choir Room

FBB = Faith Building Block

FH = Fellowship Hall

FS = Fireside Room

LG = Lounge

MR = Mary Room

NX = Narthex

SN = Sanctuary

TR = Thomas Room

UR = Upper Room

Events subject to change; up-to-date information at 1stlu.org/cal

Subscribe to our Google calendar at 1stlu.org/calsub

Use the QR Codes to quickly add these events to the calendar of your smart phone or tablet.

Tips: focus the code, hold the device still, try various distances, & use good lighting. Need a scanning app? Try www.scan.me.



Share your Faith Alive moments!
Tag them #faithalive365
and like us at facebook.com/1stlu

STAFF DIRECTORY

Jason Stanton Senior Pastor 608.386.6431 jason@firstlu.org
Karyn Bodenschatz Associate Pastor 608.433.6002 karyn@firstlu.org

Bridget Crave Community Impact Director bridget@firstlu.org
Kathryn Pedretti Director of Hospitality kathryn@firstlu.org

YOUTH/EDUCATION STAFF

Cassie Carrell Nursery Coordinator nursery@firstlu.org
Beth Miller Sunday School Superintendent sundayschool@firstlu.org
..... Young Youth Director beth@firstlu.org

SUPPORT STAFF

Tamara Schonsberg Office Assistant 608.783.2236 office@firstlu.org
Andy Stutesman Director of Communications & Marketing andy@firstlu.org
Diana Carey Bookkeeper diana@firstlu.org
Dave Nichols Building Maintenance & Grounds Custodian Supervisor dave@firstlu.org
Jerry Yushta Assistant Custodian

MUSIC STAFF

Gabriel Hicks Organist gabe@firstlu.org
Jim Knutson Bell Choir Director jim@firstlu.org
Todd Saner Senior Choir Director & Contemporary Music Coordinator todd@firstlu.org

PRESCHOOL STAFF

Melissa Rolbiecki Preschool Director 608.779.4504 preschool@firstlu.org
Beth Miller 4K Teacher beth@firstlu.org
Marci Leppert Preschool Assistant Teacher
Tracy Stoll Preschool Assistant Teacher

VISION & LEADERSHIP TEAM

Larry Schreiner President
Jennifer Wiesjahn Vice President
Diane Shuda Secretary
Brandon King
Derrick Knight
Michelle Renkas
Nancy Beguin



FIRST LUTHERAN

NON PROFIT ORG
POSTAGE PAID
ONALASKA, WI
PERMIT #15

410 Main Street
Onalaska, WI 54650
608.783.2236
www.FirstLutheranOnalaska.org

ADDRESS SERVICE REQUESTED

To stop delivery: email andy@firstlu.org or call office at 608.783.2236

WORSHIP SCHEDULE

Live streaming at 1stlu.org/live
Sundays

9:15am Sept. 6
8am & 10:30am starting Sept. 13
Wednesday 6:15pm

Scan to
download this
newsletter to
your smart
phone or tablet



Go green!
Scan to
subscribe to the
newsletter
online



Evangelical Lutheran
Church in America
God's work. Our hands.

edition: September 2020



GOOD NEWS

SEPTEMBER 2020

FIRST LUTHERAN

FIRST LUTHERAN PLAY DAYS

@ SUGAR CREEK, SEPT. 18-20

ALSO INSIDE

BLOOD DRIVE
SEPT. 8

**SUNDAY
SCHOOL
IN A BOX**

#faithalive365