



FIRST LUTHERAN

GOOD NEWS!

NOVEMBER 2023

All of this and more on the web at www.FirstLutheranOnalaska.org

SEE ALSO...

-  facebook.com/1stlu
-  instagram.com/1stlu
-  twitter.com/1stlu
-  youtube.com/1stlu
-  1stlu.org/cal
- [#faithalive365](https://twitter.com/faithalive365)

INSIDE

- 2 Christmas Giving Tree
ELCA Good Gifts
- 3 Readings for November
The Gospel of Mark
- 4 Finance & Stewardship Report
- 5 Faith Web Ideas for November
Message from
Presiding Bishop Eaton
- 7 Serve & Give
- 8 Announcements
- 9 Preschool
- 10 Sunday School
Parents' Night Out
Advent Around the Table
- 11 Confirmation
- 13 OWLs Post
- 14 All Saints Worship
Thanksgiving Eve Worship
Onalaska Community
Thanksgiving Dinner
- 15 Calendar, Weekly Events
- 17 Staff Directory

MESSAGE FROM PASTOR STANTON



On First Fest Sunday, back in September, First Lutheran tried something new (to us). The idea was to invite *every* kid and every adult into a **Faith Web**. On poster paper, we drew five lines. On the top went the name of a child who, in 2024, plans to experience a faith formation event by attending a Christian camp, our middle school mission trip to Rapid City, SD, or the ELCA Youth Gathering to New Orleans. On the next line down goes the name of the child's family. That family is "supporting household #1" for that child. There is space under that first supporting household for three more. Each supporting household commits to connecting with that child in whatever way(s) they choose. It could be as simple as getting to know each other's name, keeping the child in prayer and perhaps receiving a note of thanks at some point after the faith formation experience. The 'thanks' is for the other big commitment made by each supporting household: \$300 toward their faith formation experience.

Each month, a menu of possibilities for connections will be provided to all the supporting households and kids. In October, some were, "sit together at worship", "Go to the First Lutheran Fall Fest together" or "offer to rake each other's leaves." There was also a "meet-your-web" event in our sanctuary where participants shared 'trading cards' that included basic contact information and answers to some fun questions like 'sweet or spicy', 'summer or winter'. 57 kids signed up, meaning that in addition to their 57 families, 171 more lines awaited supporting households. As of the last week of October, 115 of those lines are filled! Only 60 (or so) supporting households to go.

The first and most obvious goal of Faith Webs at First is to financially

"We want this family of faith to feel more like a family"

Faith Webs put kids' faith formation at the center of a group project

support families so that they can more easily send their child(ren) to faith formation experiences. Think about what gets communicated to a kid AND their family who have friends at church (perhaps strangers otherwise) who put their money where their mouth is? At a baptism, everyone in the room says they will support the newly baptized in their life of faith. But that can feel insincere when we don't even know each other's names. \$300 is a significant but doable amount of money as some of us can simply write a check while others of us will make full use of the months between signing up and June 1, 2024 when the gift is 'due'. Many of us will be using scrip cards to meet our financial commitment. Give us 7 months and much of our commitment will be met!

The other—and *just as meaningful*—goal of Faith Webs at First Lutheran is **to make our church feel smaller**. Leaders at First Lutheran have talked

Continues on page 2

Christmas Giving Tree



about this challenge for years: "how can we know each other's names?" "How can we get to know each other amidst so many busy schedules?" "We want this family of faith to feel more like a family." Faith Webs answers all these questions by putting kids' faith formation at the center of a group project shared by a wide variety of partners: one child might have supporting households of 1) a widow, 2) an 'empty-nester' couple and 3) a 20-something and their partner along with 4) their own parents and siblings. Well, guess what? Those households do not only learn the name and likes/dislikes of the kid... They become familiar with the whole web! That widow meets and becomes known to 7-10 people in that scenario and vice versa for everybody else.

On October 15, at the first "meet-your-web" event, one 70 something grandmother said, "it was so fun to trade cards with our kid (who is 8). Our

grandkids just aren't little any more and it was fun to remember that age and he is such a great little boy! I'm so glad we signed up for it!" In fact, it was so fun that she and her husband signed up for a second child to support.

Thank you to all who have received this opportunity to connect with your family of faith. If you'd like to become a supporting household, or if you have any questions about whether such a program is right for you, please visit the Faith Webs table in the narthex before or after worship on Sundays or Wednesdays. It is the same table where we sell scrip cards.

Pastor Jason Stanton
jason@firstlu.org

Help make Christmas special for area kids and families by buying NEW items for them. We are again partnering with La Crosse County Human Services, and have a list of people and items they or their social worker have requested. Make certain tags are attached to the outside of the wrapped gift. If you purchase gift cards, please wrap them in a box.

Tags available Nov. 12.

Gifts should all be turned in to First Lutheran by Sunday, Dec. 10.

Questions? Email bridget@firstlu.org

Choose a Good Gifts ornament from the giving tree in the narthex, then go to ELCA.org/GoodGifts and make your donation

First Lutheran Church
410 Main St.
Onalaska, Wisconsin 54650
608.783.2236
Fax: 608.783.3741

office@firstlu.org
www.FirstLutheranOnalaska.org

WORSHIP SCHEDULE

In-person, indoors & outdoors, and live streamed at 1stlu.org/live
Sunday 8:00 & 10:30AM
Wednesday 6:15 PM

SUBMITTING NEW ANNOUNCEMENTS

To have your announcement in the newsletter, send it to newsletter@firstlu.org, or give it to Andy in the office. **Deadline for the newsletter is noon on the 15th of the preceding month.**

To have your announcement in the weekly announcements pages handed out each weekend, send it to announcements@firstlu.org, or give it to Andy in the office. **Deadline for the weekly announcements is noon each Wednesday.**

First Lutheran is a congregation of the Evangelical Lutheran Church of America (ELCA)



READINGS FOR NOVEMBER

Sunday, Nov. 5: Matthew 23:1-12

Wednesday, Nov. 8: 1 Kings 18:[17-19] 20-39

Sunday, Nov. 12: Matthew 25:1-13

Wednesday, Nov. 15: Hosea 11:1-9

Sunday, Nov. 19: Matthew 25:14-30

Wednesday, Nov. 22: Isaiah 5:1-7; 11:1-5

Thursday, Nov. 23: Luke 17:11-19

Sunday, Nov. 26: Matthew 25:31-46

Wednesday, Nov. 29: 2 Kings 22:1-10 [11-20]; 23:1-3

Above are the tentative readings scheduled for November. Readings used during worship are determined by the pastors on a weekly basis, and, therefore, are subject to change.

You can also view this list online and subscribe to receive them as an email at 1stlu.org/readings.



New Member Directories Now Available

Members can pick one up for their household at the Welcome Center

Members can also access our online directory at 1stlu.org/directory

THE GOSPEL OF Mark

Are you looking for a connection between scripture and everyday life? If so, join Pastor Libby Howe for one or both of these opportunities:

On Nov. 13 and 20, from 6-7pm

an overview of the gospel Mark, in the Narthex

Register online at 1stlu.org/next

And starting on Nov. 20 at 7pm, a year-long journey through the lectionary (our schedule of readings).

Both will meet in the narthex.

Cost of the yearlong class is \$20 for the devotional study book we will use.



Questions? Connect with Pastor Libby

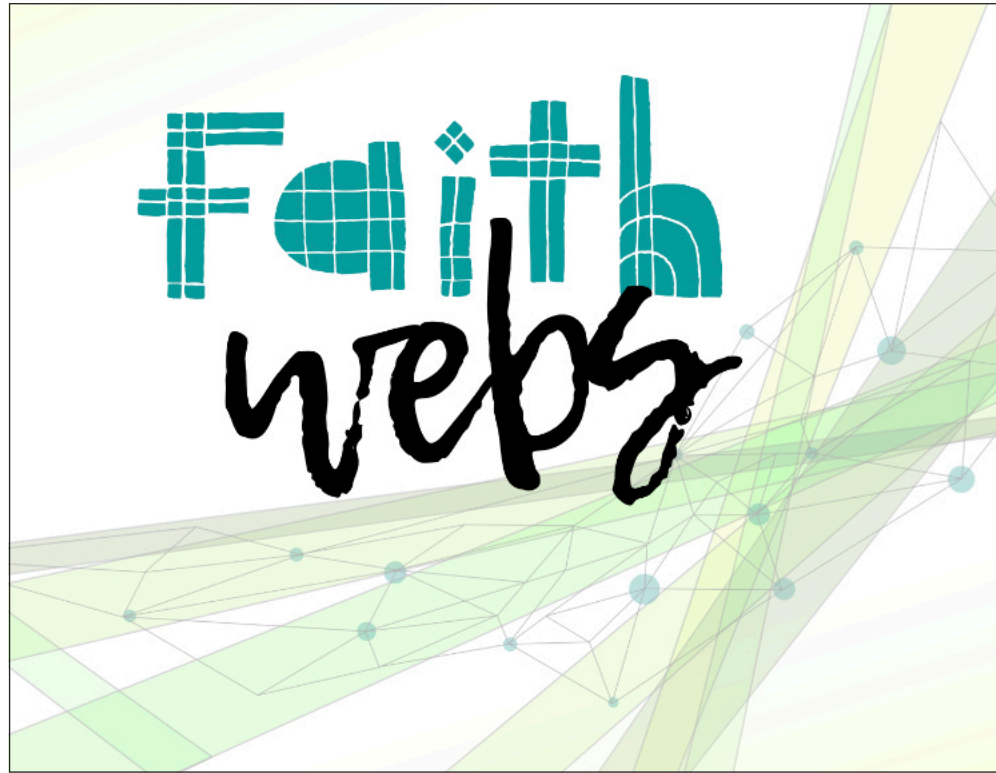
**2023
SMALL GROUPS**

Weekly Groups:

- Coffee with Pastor Karyn
- Courageous Men
- Knitters
- Parent Share
- Quilters

Monthly Groups:

- Dorcas Circle
- Drawing from the Well
- Elizabeth Circle
- Grief Support Group
- OWLs
(Older, Wiser Lutherans)



THANK YOU FOR your continued financial support as we focus on bringing people into a relationship with Jesus Christ. This

Changes Lives! As a congregation one of our great responsibilities is to bring our youth into a relationship with Jesus Christ. Have you heard of Faith Webs? It is our newest effort to support our youth. We are striving to **Build Community** between our children and all of the families connected at FLC. We are encouraging support with time, prayers, talents, activities and money. You can become part of this ministry by signing up to support a youth in the congregation at the Faith Webs table in the narthex, after worship. We are hoping to get four supporting families for each youth. Each month a list of

suggestions on how to connect will be handed out. So why is this in the finance section of the newsletter? Because part of the support is a request to donate \$300 between now and June 1, so each child can say "YES I'm going" to either Sugar Creek, the middle school mission trip or the ELCA Youth Gathering. When giving, make your donation to First Lutheran Church and include the name of the child it is designated for, along with the ministry they are involved in, on your check, envelope or e-payment. A special button on our giving page is set up so you can give for an exact period of time so much a week/month or one time. Look for the Faith Webs button when you click Give Now on our giving web page (1stlu.org/giving). For more

information about Faith Webs visit 1stlu.org/faithwebs.

General Fund giving at the end of Sept. 2023 was \$479,267, an increase of \$7,512 over 2022. We are encouraged that our giving has increased and look forward to meeting our goal of \$40,000 of increased giving by year end so we make our goal of giving \$10,000 each to Safer Families for Children, Lutheran World Relief for Ukraine, Providing Food Hospitality for Neighbors and Hosting Special Music. Thank you for your continued support. Please consider regular giving via Simply Giving to provide the resources to expand our ministry to Change Lives. If you are already participating in Simply Giving, thank you. To enroll sign up at 1stlu.org/giving, or call the church office.

Full financial details are available by request in the church office. We welcome everyone to attend the finance committee meeting. We meet every month, on the second Wednesday, at noon. The Stewardship Committee meets monthly and is looking for members. For meeting times, contact Pastor Stanton.

Faithfully submitted,

The Finance and Stewardship Committees



Ideas for November...

Pray for one another.

Sit together at worship.

Attend All Saints Worship together (both Wednesday, Nov. 1, 6:15pm and Sunday, Nov. 5, 8am & 10:30am).

Attend the Ecumenical Thanksgiving Eve worship together at Onalaska United Method, Wednesday, Nov. 22, 6:30pm.

Send a card to your faith web saying "Thank you for supporting me!"

Exchange your favorite soup or pie recipe.

Pick a tag from the giving tree and work together to find a gift for a local child/family.

Caring Conversation Questions

What's your favorite thanksgiving food?

Have you ever had a nick name?

What is a skill you have always wanted to learn?

MESSAGE FROM PRESIDING BISHOP EATON

"God is our refuge and strength, a very present help in trouble" (Psalm 46:1).

October 10, 2023

Dear Bishop Azar,

My heart continues to be heavy as we have learned of the escalation of conflict between Hamas and Israel and the growing number of casualties. We mourn all the lives lost and those who live in fear.

I read your [statement](#) last weekend and wish to assure you that you, our siblings in Christ who continue to bear faithful witness to the gospel, enduring years of living under occupation and violence – and now war, are not lost to us in this horrendous situation.

You lifted up how the conflict is connected to a larger context and history, which is important for our awareness. I share your reminder: "As a church, [the ELCJHL continues] to advocate for non-violence; but we also believe it is crucial to understand the circumstances from which violence emerges. ... It is a symptom of a people deeply wounded by extended and systematic violence and oppression. ... As always, we pray for a peaceful resolution that extends human rights to all. We remember that the peace Jesus offers, that which is based in justice and solidarity with the suffering and oppressed, is at the root of true peace."

I encourage the people of the Evangelical Lutheran Church in America to unite in prayer for the families of innocent civilians whose lives were lost, as well as pray for healing for all the injured, fearful and traumatized.

I pledge our accompaniment and support to you as the Evangelical Lutheran Church in Jordan and the Holy Land and its ministries provide "critical and timely assistance [psychological and otherwise] to those affected by this war."

We also will advocate to U.S. officials your "appeal to the international community to stand with us in these efforts to address the crisis in Gaza and to urge all involved to uphold the principles of international humanitarian law."

We pray:

God, our refuge and strength, you have bound us together in a common life. In all our conflicts, help us to confront one another without hatred or bitterness, to listen for your voice amid competing claims, and to work together with mutual forbearance and respect; through Jesus Christ our Lord. Amen (*Evangelical Lutheran Worship*, page 76).

A handwritten signature in black ink that reads 'Elizabeth A. Eaton'.

The Rev. Elizabeth A. Eaton
Presiding Bishop, Evangelical Lutheran Church in America

Lutheran Disaster Response has a history of providing support for our partners and anticipates answering calls for assistance when the time comes.

Gifts to "Middle East Crisis" at 1stlu.org/LDR will be used to address humanitarian needs in the region.

JOIN OUR SYNOD'S
MIGRANT JUSTICE TEAM AS WE

WELCOME SEASONAL
WORKERS TO SUGAR CREEK



WE'RE PUTTING TOGETHER WELCOME BAGS,
TO PROVIDE BASIC NECESSITIES AND LET
THEM KNOW WE ARE HAPPY TO HOST THEM!



You can join in this cause by sponsoring
a Welcome Bag ~ \$20.
Use the QR code or visit tinyurl.com/LAXSynodGive.
Select "Designate other Ministry" and name the
"Migrant Justice Team" to donate.

VISIT LACROSSEAREASYNOD.ORG/MIGRANT-JUSTICE-TEAM
TO LEARN MORE



Cookies for



LuMin Campus Ministries
continues the tradition of
bringing hundreds of cookies to
UW-La Crosse each week,
beginning Sept. 6. 500 (approx.
42 dozen!) cookies are needed
EACH WEEK.

Learn more and sign up at
1stlu.org/next



GO AND DO LIKEWISE LUKE 10:37

SUNSHINE TEAM

The Sunshine Team meets at First Lutheran on the **first Thursday of the month at 9:30am** to help with various jobs. **NEXT: Nov. 2.** Help make First Lutheran look nice! Refreshments are supplied to replenish your reserves! Dues are free! *Questions? Contact Dan at dan@firstlu.org.*

NEWSLETTER ASSEMBLY

It's a relaxing way to volunteer! **Tuesday, Nov. 28, at 10am**, to assemble the Dec/Jan newsletter. See you there!

CHRISTMAS CHOIR

The next event the choir will rehearse for is Christmas Eve. Practice begins **Wednesday, Dec. 6, at 7pm** in the sanctuary. All are welcome... there is no audition and no formal training required, just a desire to enhance worship through the beauty of music! And the time commitment is just for the one performance (not the entire year). Full schedule and sign-up at 1stlu.org/choir. If needed, child care will be made available (just indicate this need on the sign-up form). *For more info contact Todd Saner at todd@firstlu.org.*

CLOTHES CLOSET NEEDS

First Teen Clothes Closet is asking for winter hats, gloves and mittens for middle school and high schoolers. New and like new (no homemade please, the kids won't take them). The items can be placed under the tree in the narthex **until November 26.** No scarves, as we already have a lot of them. We won't be collecting socks this year... The synod assembly collected socks for the area non-profits this summer and we are all very well stocked on socks. Thank you for your continued support of the clothes closet! We have served over 450 teens so far this year!



Stephen Ministers are the "after people..." They are ready to come alongside you—or your friends, neighbors, coworkers, or relatives—and provide comfort and support for as long after as needed. More info: stephenministries.org

If you know of someone who needs a caregiver, speak with Pastor Karyn (karyn@firstlu.org) or call the church office (608.783.2236).

PUPPET MINISTRY

The ministry provided by our puppeteers has returned to our second service! But the ministry can't happen without shepherds—adults willing to walk our youth (4-yr-olds through grade 3) down to the choir room and then watch over them during the presentation. *Sign up at 1stlu.org/assistsun/*

FRIENDS OF THE WARMING CENTER

The Warming Center will open Nov. 1 for unhoused people, and the area ELCA churches have agreed to provide evening meals the 3rd and 4th Friday of each month, November–April. Prepare the meal in your kitchen and drop it off at the Warming Center ready to be served. Other people serve the meal; you just prepare it. You are welcome to use the Hunger Task Force for meal ingredients. *More info and reg at 1stlu.org/warm.*

CANNED SOUP DRIVE

The Salvation Army's Angel Giving Tree Food Baskets program aims to provide families with a basket of food during the Christmas season, and the organization has asked First Lutheran to help by collecting canned soup during October and November. Please bring only canned soups for this specific campaign. We have a collection box in the entryway for your donations. The Salvation Army anticipates a need for 500 food baskets this year.



QUILTS ARE ON THEIR WAY FOR LWR

The First Lutheran Quilters made 200 quilts during the past 12 months, and on Oct. 10, about 20 members of the quilting group and the Sunshine Team boxed them up for delivery to Lutheran World Relief. On Oct. 14, the boxes were taken to the LWR semi at Good Shepherd Lutheran Church, which took them to the LWF warehouse in the Twin Cities for distribution worldwide. The quilters, who get together every Tuesday morning, have already started work on the next 200.

FAMILY PHOTOS: A CLOUD OF WITNESSES

We honor our brothers and sisters in Christ who have gone before us during a special worship services **on All Saints Day, Wednesday, Nov. 1, 6:15pm and Sunday morning, Nov. 5, 8am and 10:30am**, all in-person and also live streamed at 1stlu.org/live.

All Saints Day has long been a day when the church gives thanks for all the saints, the beloved, who have died, especially in the past year. In the coming weeks, we will be asking for photographs of your beloved dead so that we can be surrounded by their witness at All Saints worship. These pictures can be sent electronically (to karyn@firstlu.org) or brought in. They will be printed as 4X6, so resolution should be such that they can be printed well from what you submitted. If your loved one was a member of our congregation and died this past year, you will receive a letter with a special request. All Saints Day isn't only about those who have died but also about those who have been newly baptized. If your child was baptized this past year, you also will receive a special request. Please note, we will continue to use the photos submitted last year, so no need to resend those photos.

FALL BACK!

Daylight saving time ends at **2am, Sunday, Nov. 5** Don't forget to change your clocks! (Otherwise you'll just be early to church!)

BUTTER BRAID FUNDRAISER

Butter Braids will be available at the church for pickup on the afternoon of **Monday, Nov. 13**.

THANKSGIVING EVE WORSHIP @ ONA UMC

A little later than our usual worship on **Wednesday, Nov. 22**, members of First are invited to join in a special, ecumenical worship service that **Thanksgiving Eve at 6:30pm, at Onalaska United Methodist**, with a our brothers and sisters in christ from Onalaska UMC.

BAPTISMAL PREPARATION

The next baptism preparation session will be **Saturday, Dec. 2, at 10am** in the narthex for anyone who is considering or has scheduled a baptism. *To register or ask questions call the church office at 608.783.3326 by Sunday, Nov. 26. Min. attendance required: 2 families.*

NEW-MEMBER SOCIAL

By choosing to become a member, individuals and families commit to being part of a shared mission. People who would like to become members of First Lutheran are invited to a social at David Reay's on **Thursday, Apr. 18, 2024, at 6pm**, where you will get to know more about First and the staff in a relaxed atmosphere. *To register your family or ask questions, call our church office at 608.783.2236 or email office@firstlu.org.*

MEMBER DIRECTORIES NOW AVAILABLE

We appreciate everyone's patience! Print directories are now available for members! Members can pick one up for their household at the Welcome Center. REMINDER: members can make changes to their contact info on their own using our online directory: 1stlu.org/directory. *Questions about the directory and the information within? Email Tamara (office@firstlu.org) or Andy (andy@firstlu.org).*

HAPPY BIRTHDAY!!

If you have received a birthday postcard from First in the last several months and still have it, bring it into church Mon-Fri, 8am-4pm and pick up a small gift.

WE CELEBRATE THE GIFT OF HOLY BAPTISM

- Raela Lynn Honeck
- Peyton Nicole Ring

WEDDINGS

God's blessings to...

- Alyssa Vinz & Matt Stees

CHRISTIAN SYMPATHY TO THE FAMILY & FRIENDS OF:

- Jordan Lass
- JoAnn Briggs
- Gilbert 'Gib' Chick
- Irv Wittenberg

GIFTS AND MEMORIALS

Thank you for the following memorials:

In memory of Mary Etta Anderson

- Skogen Memorial Music Fund: Dave & Barb Skogen, Pamela Polasky, Virginia & Emil Hanson, friends & family of Mary Etta Anderson
- Youth Fund: Friends & family of Mary Etta Anderson

In memory of JoAnn Briggs

- First Lutheran Quilters: Marilyn Fox, Bev Fuhrman, Nancy Holthaus, Nancy & Kirk Rodman, Ardie Van Riper
- Undesignated: Ed & Barb Burrell, Gloria Cassel, Gaylord & Esther Dolphin, Daniel Ferries & Jeannette Lunde, Ann Hudson, Judy Johnson, Jan Klimke, Gloria Kubiak, Phil & Sarah Nohr, Richard Odemoe, Mark & Shirley Sacia, Kathryn Schroeder

In memory of Robert Crave

- Undesignated: Randy & Lauri Berg

In memory of Mark Wagner

- Teen Clothes Closet: Lee & Yvonne Cade

HOSPITAL REMINDERS

For Gundersen: be sure to alert the hospital of your church affiliation when they ask, and they will release your name to us when we call.

For Mayo/Franciscan Healthcare: it is important that you or a family member contact us at the church office: 608.783.2236. Mayo no longer lets churches know who is a patient at their hospital.

NEIGHBORS IN CRISIS

Your gift to Lutheran World Relief will deliver urgently needed support and care to innocent civilians in Israel and Gaza.

lwr.org/crisis



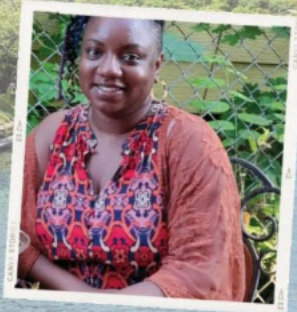
FORUZZO



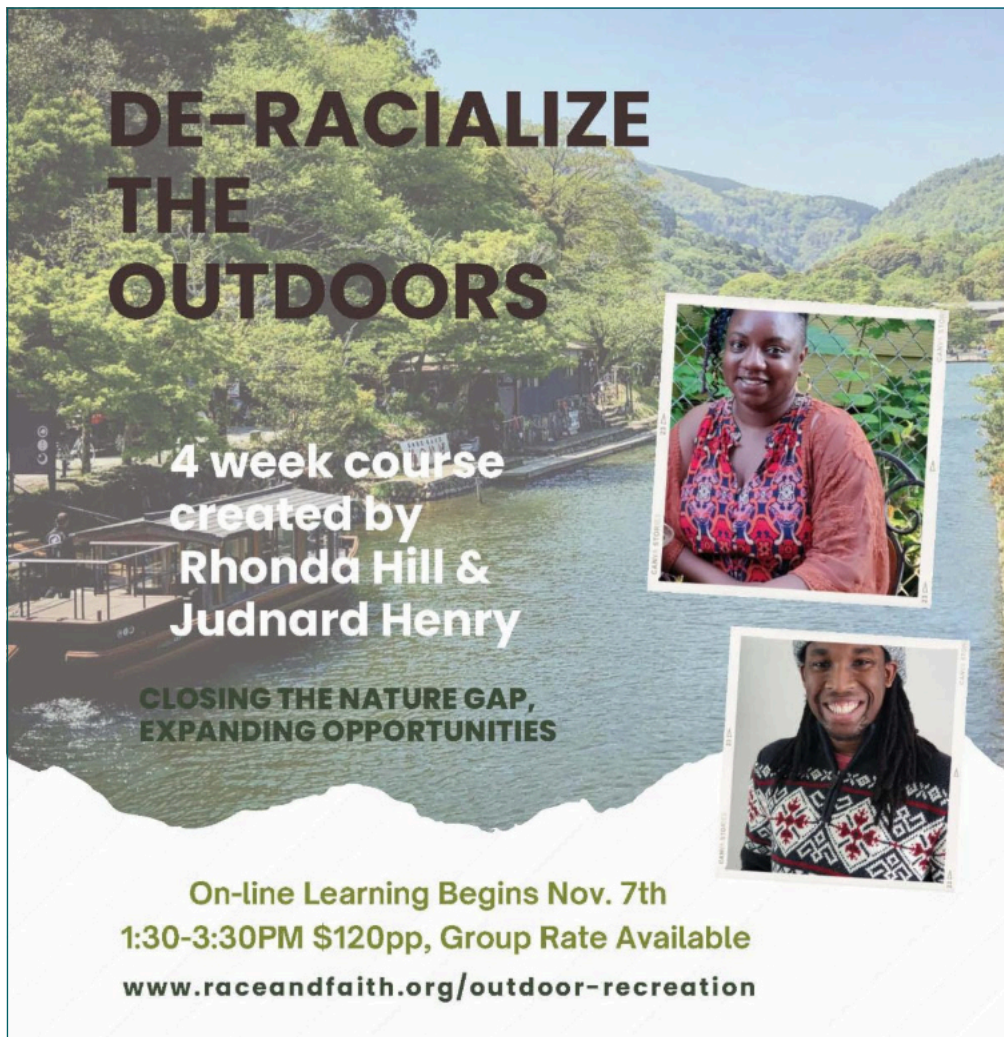
DE-RACIALIZE THE OUTDOORS

4 week course
created by
Rhonda Hill &
Judnard Henry

**CLOSING THE NATURE GAP,
EXPANDING OPPORTUNITIES**



On-line Learning Begins Nov. 7th
1:30-3:30PM \$120pp, Group Rate Available
www.raceandfaith.org/outdoor-recreation



FIRST LUTHERAN PRESCHOOL

Mark your calendars for
March 14th Open House
from 4:30-5:30 for the
2024-2025 school year.
We enroll children ages
2 years old and up.

MORE INFORMATION
email us at
preschool@firstlu.org



WARMING CENTER

Lutherans are covering shifts and meals
the 3rd & 4th Fridays Nov. 1–Apr. 30.

Learn more and sign up:
1stlu.org/next



Contact Bridget for info: bridget@firstlu.org

Parents' Night Out

Bring your children for an evening of fun with the middle and high school youth groups' fundraiser!

WHERE: at First Lutheran, **WHEN:** Friday, Nov. 10

FOR: Birth-12 are welcome (Birth-3 will be in the nursery, ages 4 and up in Fellowship Hall)

Registration from 4:45-5:30pm

**Followed by dinner and activities till 8pm
(parents can pick up early if needed)**

COST: Donations will assist the middle and high school students with 2024 Sugar Creek Bible camp, mission trip and youth gathering.

Advent Around the Table

We invite everyone to join us on

Sunday, Nov. 26 at 9:15am in

Fellowship Hall for this annual tradition.

We will gather to create advent crafts for our homes. Along the way we will learn more about this particular season, have great fellowship and grow in our faith as we kick off the Advent season.

Sunday School

FAITH BUILDING BLOCKS

Grade 3-Yr Olds: Praying Together, in Fellowship Hall
Sunday, Nov. 5: Faith Building Block lifted up in worship



Grade 1: 10 Commandments, in Fellowship Hall
Sunday, Nov. 5: parents/guardians only
Sundays, Nov. 12 & 19: parents/guardians with children
Sunday, Nov. 26: Faith Building Block lifted up in worship



Throughout the year each age group has a special "Faith Building Block" session in which parents or special adults are asked to attend class with their child. Most sessions last for four weeks. The first class consists of parents/guardians connecting with a pastor and other parents in Fellowship Hall. Weeks two and three classes are for the child and their parents/guardians to attend together, sharing in conversation and growing together in faith. The fourth and final week, children will have a presence in worship in celebration of the Faith Building Block they have learned about.

New registrations welcome any time of the year!

Questions? Head to 1stlu.org/sunschool



Peer Ministry is an amazing opportunity for our young adults here at First Lutheran. It trains and equips them to have the skills to deal with the tough situations that confront our youth in today's world.

They learn how to welcome those who are hurting, listen with empathy, and communicate in clear ways. Peer Ministry grows leaders who can continue to help and serve in their everyday life.

More info: 1stlu.org/peermin

Questions?

Contact jason@firstlu.org.

CONFIRMATION

Teen-relevant, age-appropriate, active, modern, and theologically sound Events subject to change; up-to-date info at 1stlu.org/confirmation

AFFIRMATION OF BAPTISM

We give thanks for the gift of baptism and for these people, one with us in the body of Christ, who publicly affirmed their baptism on **Sunday, Oct. 29.**

- Adam Amundson
- Jack Barth
- Jackson Bosch
- Norah Carlson
- Preston Elston
- Addyson Ferguson
- Kai Gallant
- Mia Gallant
- Zander Garbrecht
- Easton Glebke
- Saydee Hink
- Zachary Imgrund
- Carter Johnson
- Ryan Johnson
- Sophia Knight
- Sydney Kranig
- Ryan Mackeben
- Bella Malecek
- Marshall Mason
- Elizabeth Matz
- Makena McGarry
- Tristan Molling
- Bennett Rieber
- Danielle Schmit
- Andrew Stanton
- Bella Waters
- Perry West

UPCOMING CONFIRMATION EVENTS

Sundays, 9:15am
Gr 6 & 7 Confirmation Classes

Wednesdays, 7:00pm
Gr 8 & 9 Small Groups





Trinity Lutheran is having a **DIAPER DRIVE** thru the end of the year, collecting for The Parenting Place in La Crosse, which distributes them free to families in need

All sizes are needed especially 5 & 6

Drop off donations at Trinity, 1010 Sill St.
9am–2pm. Mon–Thurs

CANCELLATIONS DUE TO INCLEMENT WEATHER

Cancellations will be posted in the following ways...

- Website
- Facebook page
- Text message
(update the office with your cell # and provider or at 1stlu.org/directory)

First intends to 'make the call' by 5pm so everyone knows what to expect.



First is collecting **CANNED SOUP** for the Salvation Army's Angel Giving Tree Food Baskets **through November.**

Bring donations to collection box in the entryway.

Snow birds: Before you fly drop us a line!

Heading to warmer climes? Keep us up to date by letting us know your winter address & contact info. Contact the church office with your updated information:
office@firstlu.org
608.783.2236.





OWLs

OLDER WISER LUTHERANS

The OWLs had a HOOT in October with attendance at a fantastic performance of the musical 42nd Street at Viterbo. That was followed by a fun Halloween costume party at the October potluck.

We will kick off November with our potluck on **Wednesday, Nov. 15, at noon** in the Fellowship Hall. Since it's close to Thanksgiving bring one of your favorite thanksgiving dishes to pass. For our program we are traveling virtually to Branson, Missouri to watch the famous Presley's' Country Jubilee. This is the original Branson Music Show and is a one of a kind mix of country, gospel, bluegrass and hilarious comedy. When Brian and Mary were recently in Branson they were able to purchase a video of show they saw. You can't stream this, watch it over the air or hear it on the radio. The place to see one hour of this great show is right here at an OWLs' potluck.

The OWLs outing in November will be a trip to always entertaining Pump House Theatre to see Goldpine. Goldpine is a folksy duet and has been offering their own brand of Americana to audiences large and small. Winner of the 2022 Rocky Mountain Songwriter Contest, the duo's bold harmonies are clearly a channel for their highly charged songwriting. Exposing the pains of severed relationships and unearthing the pursuits of love and purpose, Goldpine is cathartic, moody and relevant. The concert is in the intimate theater of the Pump House, and it will be a memorable evening. This fun event takes place on **Saturday, Nov. 18**. We will meet at the church at 4:30pm and have dinner at Piggy's before the show. Sign up for wonderful evening by calling (630-816-5917) or emailing Brian Narveson at owls@firstlu.org. Cost of the concert is \$28 and dinner is on your own. Sign up early as many times the Pump House sells out. You can pay Brian for the tickets the night of the event.

Save the date in December for the OWLs trip to Sugar Creek for Yesterdays Youth on **Monday, Dec. 4**. The bus will leave the church at 8am. Also don't miss the social

event of the Season, the almost world famous OWLs Christmas Party will take place in the Narthex on **Wednesday, Dec. 20 at noon**. If you would like more information about these and other OWLs events, email Brian at owls@firstlu.org, and he will add you to the mailing list. OWLs is a social group for those 55 and older. You do not need to be a member of First Lutheran to join the fun and the fellowship, so bring a friend.

The OWLs are a group at First that welcomes anyone, First Lutheran members or not, who are 55+. For information or to ask questions, contact Brian Narveson at owls@firstlu.org. A reminder for all potlucks that First Lutheran is a nut-free campus. Please do not bring food containing nuts or nut butters/oils/extracts of any kind onto the church campus. This is for the safety of all of our members. Thanks!



If you would like to start receiving the regular OWLs emails, contact Brian Narveson at owls@firstlu.org or scan this QR code. We are a social group for everyone 55+ and we know how to have fun.



All Saints Worship

Wednesday, Nov. 1
6:15pm

Sunday, Nov. 5
8am & 10:30am

We will honor our
brothers and sisters in Christ
who have gone before us
at these worship services



FALL BACK

**SET YOUR CLOCKS
BACK ONE HOUR
THIS SATURDAY NIGHT.**

Ecumenical

Thanksgiving Eve Worship

Instead of worshipping at First,
everyone is invited to a special
ecumenical worship service
at Onalaska United Methodist
212 4th Ave N, Onalaska
on Nov. 22, at 6:30pm

Live streaming at [youtube.onalaskaumc.org](https://www.youtube.com/channel/UC1m1m1m1m1m1m1m1m1m1m1m)

12TH ANNUAL

Onalaska & Holmen
Community Thanksgiving Dinner



Onalaska Community Thanksgiving Dinner
November 23, from 11–2pm
at the Onalaska American Legion
Curbside pickup; FREE and open to the public

Donations & volunteers needed: www.octd.org

NOVEMBER AT FIRST LUTHERAN *see also weekly events list on back*

Sunday	Monday	Tuesday	Wednesday	Thursday	Friday	Saturday
<p>OCTOBER</p> <p>1 2 3 4 5 6 7 8 9 10 11 12 13 14 15 16 17 18 19 20 21 22 23 24 25 26 27 28 29 30 31</p>	<p>DECEMBER</p> <p>1 2 3 4 5 6 7 8 9 10 11 12 13 14 15 16 17 18 19 20 21 22 23 24 25 26 27 28 29 30 31</p>	<p>31</p> <p>9a Quilters - FS 1:30p Staff Meeting 3:30p Knitters & Crocheters - NX 5p Bells Practice - CR</p>	<p>1</p> <p>All Saints' Day</p> <p>10a Springbrook Worship 6:15p All Saints Worship 7p Choir Practice for All Saints - CR</p>	<p>2</p> <p>9:30a Sunshine Team 7p Women of the House - House</p>	<p>3</p> <p>7p AA - FH</p>	<p>4</p> <p>Daylight Savings Ends Tonight! 🕒</p>
<p>5</p> <p>Preschool FBB: Praying Together, Lifted u... 7:30a Choir Warm Up - CR 9:15a Gr 1 FBB: 10 Commandments (1st meeting, parents/guardians only) - FH</p>	<p>6</p> <p>7p Bible Matters - NX</p>	<p>7</p> <p>9a Quilters - FS 1:30p Staff Meeting 3:30p Knitters & Crocheters - NX 5p Bells Practice - CR</p>	<p>8</p> <p>10a Ona Terrace Worship 12p Finance Team Mtg 5:30p FLY Flight Crew</p>	<p>9</p> <p>7p Women of the House - House</p>	<p>10</p> <p>4:45p Parent's Night Out - FH 7p AA - FS</p>	<p>11</p> <p>9:30a Drawing from the Well</p>
<p>12</p> <p>9:15a Gr 1 FBB: 10 Commandments (2nd meeting, parents/guardians & child) - FH</p>	<p>13</p> <p>6p The Gospel of Mark - NX 7p Bible Matters - NX</p>	<p>14</p> <p>9a Quilters - FS 1p Dorcas Circle - UR 1:30p Staff Meeting 3:30p Knitters & Crocheters - NX 5p Bells Practice - CR</p>	<p>15</p> <p>Deadline for Dec/Jan Mini Newsletter</p> <p>10a Ona Terrace Worship 12p OWLs Potluck - NX</p>	<p>16</p> <p>10a Grief Support Group - UR 7p Women of the House - House</p>	<p>17</p> <p>7p AA - FS</p>	<p>18</p> <p>4:30p OWLs Fly to Pumphouse for Goldpine</p>
<p>19</p> <p>9:15a Gr 1 FBB: 10 Commandments (3rd meeting, parents/guardians & child) - FH</p>	<p>20</p> <p>1p Elizabeth Circle 6p The Gospel of Mark - NX 7p Bible Matters - NX</p>	<p>21</p> <p>9a Quilters - FS 1:30p Staff Meeting 3:30p Knitters & Crocheters - NX 5p Bells Practice - CR 5:15p Personnel Team Mtg 7p Vision & Leadership Team Mtg</p>	<p>22</p> <p>5:30p Choir Practice for Thanksgiving Eve - Ona UMC</p>	<p>23</p> <p>Thanksgiving (office closed) 🍂 7p Women of the House - House</p>	<p>24</p> <p>7p AA - FS</p>	<p>25</p>
<p>26</p> <p>Gr 1 FBB: 10 Commandments, lifted u... 9:15a Advent Around the Table - FH 9:15a Sunday School: Advent Around the Table - FH</p>	<p>27</p> <p>7p Bible Matters - NX</p>	<p>28</p> <p>9a Quilters - FS 10a Assemble Mini-Newsletter - NX 1:30p Staff Meeting 3:30p Knitters & Crocheters - NX 5p Bells Practice - CR</p>	<p>29</p>	<p>30</p> <p>7p Women of the House - House</p>	<p>1</p> <p>7p AA - FH</p>	<p>2</p> <p>10a Baptismal Preparation - NX</p>

weekly events for

NOVEMBER

at First Lutheran

SUNDAYS

8:00am Worship

9:15am Gr 6 & 7 Confirmation Classes - Fireside Rm

9:15am Parent Share - Upper Rm

9:15am Sunday School

10:30am Worship

MONDAYS

7:00pm Bible Matters - Narthex

TUESDAYS

9:00am Quilters - Fireside Rm

10:30am Staff Meeting

3:30pm Knitters & Crocheters - Narthex

5:00pm Stephen Ministry Class - Gloria's

5:00pm Bells Practice - Choir Rm

WEDNESDAYS

6:00am Courageous Men - Fireside Rm

6:30am Coffee w/ Pastor Karyn - Narthex

5:30pm Confirmation Dinner

6:15pm Worship

7:00pm Confirmation Small Groups

THURSDAYS

7:00pm Women of the House

FRIDAYS

7:00pm AA - Fireside Rm (*Fellowship Hall 1st Friday*)



CALENDAR KEY

CR = Choir Room

FBB = Faith Building Block

FH = Fellowship Hall

FS = Fireside Room

LG = Lounge

MR = Mary Room

NX = Narthex

SN = Sanctuary

TR = Thomas Room

UR = Upper Room

Events subject to change; up-to-date information at 1stlu.org/cal

Subscribe to our Google calendar at 1stlu.org/calsub

Use the QR Codes to quickly add these events to the calendar of your smart phone or tablet.

Tips: focus the code, hold the device still, try various distances, & use good lighting. Need a scanning app? Try www.scan.me.

facebook

Share your Faith Alive moments!
Tag them #faithalive365
and like us at facebook.com/1stlu

STAFF DIRECTORY

Jason Stanton Senior Pastor 608.386.6431 jason@firstlu.org
Karyn Bodenschatz Associate Pastor 608.433.6002 karyn@firstlu.org

Bridget Crave Community Impact Director bridget@firstlu.org
Kathryn Pedretti Director of Hospitality kathryn@firstlu.org

YOUTH/EDUCATION STAFF

Cassie Carrell Nursery Coordinator nursery@firstlu.org

SUPPORT STAFF

Tamara Schonsberg Office Assistant 608.783.2236 office@firstlu.org
Andy Stutesman Director of Communications & Marketing andy@firstlu.org
Dan Hurley Director of Buildings & Grounds dan@firstlu.org
Diane Finnegan Bookkeeper diane@firstlu.org
Jerry Yushta Assistant Custodian
Rob Nelson Assistant Custodian

MUSIC STAFF

Gabriel Hicks Organist gabe@firstlu.org
Jim Knutson Bell Choir Director jim@firstlu.org
Todd Saner Senior Choir Director & Contemporary Music Coordinator todd@firstlu.org

PRESCHOOL STAFF

Melissa Rolbiecki Preschool Director 608.779.4504 preschool@firstlu.org
Amy Zimmer 4K Teacher amy@firstlu.org
Marci Leppert Preschool Assistant Teacher
Angie Strittmater Preschool Assistant Teacher

VISION & LEADERSHIP TEAM

Larry Schreiner President
Donna Bossman Secretary
Amanda Zieba
Derrick Knight
Jason Witt
Michelle Renkas
Phyllis Bey



**FIRST
LUTHERAN**

410 Main Street
Onalaska, WI 54650
608.783.2236
www.FirstLutheranOnalaska.org

WORSHIP SCHEDULE

Live streaming at 1stlu.org/live
Sundays 8am & 10:30am
Wednesday 6:15pm



Scan to download
this newsletter to
your smart phone
or tablet



Go green!
Scan to subscribe
to the newsletter
online



Evangelical
Lutheran Church
in America

edition: November 2023

ADDRESS SERVICE REQUESTED

To stop delivery: email andy@firstlu.org or call office at 608.783.2236

NON PROFIT ORG
POSTAGE PAID
ONALASKA, WI
PERMIT #15



GOOD NEWS
NOVEMBER 2023

Faith
webs

ALSO INSIDE

**THE GOSPEL
OF MARK**

**ALL SAINTS
SUNDAY**

**ECUMENICAL
THANKSGIVING
EVE WORSHIP**

#faithalive365