





AS A PART OF STEWARDSHIP FOR THE UPCOMING YEAR, THE CONGREGATION IS INVITED TO A COTTAGE MEETING AT DAVID REAY'S TO PROVIDE INPUT TOWARD 2024'S "BIG THREE IDEAS."

**WHAT DO YOU ALREADY LOVE ABOUT FIRST LUTHERAN?  
WHAT ARE OUR GREATEST OPPORTUNITIES AS A CHURCH?  
WHERE COULD WE DIRECT OUR GENEROSITY  
AND ENERGY IN THE FUTURE?**

THE LEADERSHIP OF FIRST LUTHERAN WANT TO HEAR YOUR IDEAS ABOUT WHERE GOD MAY BE CALLING US IN 2024 AND BEYOND.

SIGN UP AT [1STLL.ORG/NEXT](https://1stll.org/next) TO RESERVE YOUR SPOT AT DAVID REAY'S, THURSDAY, SEPT 21. COME ANY TIME AFTER 5:30. THE MEETING STARTS AT 6:00 AND WILL BE DONE BY 7:30. BABYSITTING WILL BE PROVIDED AT CHURCH FROM 5:30-8PM. FIRST WILL PROVIDE SOME APPS; YOU BUY YOUR OWN BEVERAGES. JOIN PASTOR STANTON AND OTHER LAY LEADERS FOR FELLOWSHIP AND CONVERSATION.

IF THURSDAY DOESN'T WORK, WE WILL HAVE THE SAME CONVERSATION AT FIRST LUTHERAN BETWEEN SERVICES ON SUNDAY, SEPT. 24, IN THE NARTHEX. TREATS WILL BE A BIT MORE SUBSTANTIAL, AND NO SIGN UP IS REQUIRED. JUST COME READY TO TALK ABOUT YOUR IDEAS!

# 15TH ANNUAL FIRST FEST

— ★ —  
**FOOD  
FUN  
Music &  
Fellowship!**

**TODAY!  
11:30AM**



Everyone goes through difficult times. Having someone to care, to listen, to share God's love with you can help you get through the confusion, stress or loneliness you may be experiencing. God does not intend for you to struggle alone.

If you know of someone who needs a caregiver, speak with call the church office (608.783.2236).

# Education

## Baptism Classes

Parents who wish to bring their children for baptism or for adults who wish to be baptized are asked to attend a baptism class.

**The next baptism class is Saturday, Oct. 7, at 10am.**

To register, contact the church by Sept. 27: 608.783.2236 / office@firstlu.org

## Sunday School

Classes meet for preschool age through 5th grade.

**Classes meet Sunday mornings from 9:15-10:15am, starting TODAY, Sept. 10 (meet in the sanctuary).**

If you would like more information, visit [1stlu.org/sunschool](http://1stlu.org/sunschool).



## Confirmation

Confirmation Bible classes for 6th- and 7th-graders are on **Sunday mornings at 9:15am, starting Sept. 17.** Confirmation small groups for 8- & 9th-graders are on **Wednesday evenings at 7pm, starting Sept. 13.**

For more info, visit [1stlu.org/confirm](http://1stlu.org/confirm).

## Peer Ministry

Peer Ministry is an amazing opportunity for our young adults here at First Lutheran. It trains and equips them with the skills to deal with the tough situations that confront our youth in today's world.

They learn how to welcome those who are hurting, listen with empathy, and communicate in clear ways. For our 10<sup>th</sup>-graders, starting in the fall after confirmation. For more info visit [1stlu.org/peermin](http://1stlu.org/peermin).



## First Lutheran Preschool

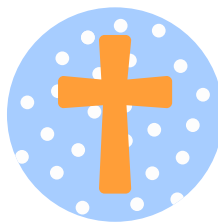
First Lutheran Preschool is a site for Christian preschool sessions and for the Onalaska public 4-year-old preschool (PreK).

Classes meet:

- Tuesday/Thursday class, held from 8:30am-11:00am for \$135 per month
- Monday/Wednesday/Friday class, held from 8:30am-11:00am for \$175 per month
- Monday through Friday class, held from 8:30am-11:00am for \$310 per month
- Onalaska 4K: Monday through Friday class, held from 8:25am-11:05am (includes busing)
- Lunch Bunch: Monday through Friday, held 11:00am-12:00pm for \$6 a day

We also offer dual enrollment, Monday through Friday mornings.

Call or email First Lutheran Preschool Director Melissa Rolbiecki to schedule a visit or to ask more questions: 608.779.4504 / [preschool@firstlu.org](mailto:preschool@firstlu.org)



FIRST LUTHERAN  
PRESCHOOL

## Membership

**First Lutheran welcomes all people to participate in Christ's mission** through our ministries, worship, and programs—whether you are a member or not.

Membership does, however, benefit both those new to us and our congregation.

People who would like to become members of First are invited to a social at **David Reay's on Thursday, Oct. 19, 6pm**, where you will get to know more about First and the staff in a relaxed atmosphere.

To register your family or ask questions, call our church office at 608.783.2236 or email [office@firstlu.org](mailto:office@firstlu.org).

**CONNECTION CARDS** help the staff keep in touch with the needs of members and visitors alike. Please fill out a card, complete with prayer concerns and anything else you'd like the pastors to know. Hand it to an usher on your way forward for communion, or place it in the offering plate. Thanks!

### Connection Card

Today's Date: _____	Contact Information: <input type="checkbox"/> Visitor/Guest info <input type="checkbox"/> Updated/changed m
I am / we are... <input type="checkbox"/> Communing member(s) <input type="checkbox"/> First time visitor(s) <input type="checkbox"/> Second time visitor(s) <input type="checkbox"/> Repeat visitor(s) <input type="checkbox"/> Interested in membership <input type="checkbox"/> Veteran <input type="checkbox"/> Guest(s), member of...	Name(s) _____ Street _____ City _____ State _____ Zip _____ Phone (mobile preferred; members please include name of carrier to allow text) _____ Congregation _____ E-mail _____
<small>Filling out one card per family is sufficient. Please hand this card to an usher as you go forward for communion, or place in the offering plate.</small>	

**MEMBERS:** please use this card to update any contact info that may have changed in the past 12 months. .

Thanks!

# FLY FLIGHT CREW

"FLY" is the name our kids have chosen for their "First Lutheran Youth" group. And FLY "Flight Crew" is the name our adults have chosen to describe how we plan to move forward with Faith Formation at First. Much like a sports, show choir or band booster club meets to dream about how to support our kids in their activities (and then shows up to actually support the activities) we want parents to do the same as we shape the faith formation of our kids. Meeting the second Wednesday of the month; **NEXT: Sept. 13, 5:30pm.** Food and child care provided. **NOTE TO THE CREW:** The *Frogs Without Legs Can't Hear* books are in, and we'll use them as our educational resource and fodder for conversation each month regarding faith formation. Pick up yours in the office whenever you have a chance. Please read the forward, introduction and chapter 1.

# SUNSHINE TEAM

This month the Sunshine Team meets a little later than usual, on **Thursday, Sept. 14, 9:30am.** Various jobs: cleaning, sweeping, mopping, vacuuming, washing windows and cleaning carpets. Help make First look nice! Refreshments are supplied to replenish your reserves! Dues are free! *Questions? Contact Dan at dan@firstlu.org.*

# GRIEF SUPPORT GROUP

Carrying on after the death of a loved one can be difficult and lonely. Join with others who listen and care for each other. **Every third Wednesday: 10am** in the Upper Room. **NEXT: Sept. 20.** Led by Carla Stanton.



On **Wednesday, Sept. 20, at noon**, the OWLS, a group for those 55+, will have their monthly potluck. For September, Brian and Mary are inviting all OWLS to their new home for great food and fellowship. Email Brian (owls@firstlu.org) for the address. Bring a dish to pass and be prepared to sit out on their deck, which has a beautiful view of the surrounding coulees. Our program will be several rousing games of Kubb; come to play or cheer on the players. So they have some idea how many to set up for, please email Brian at owls@firstlu.org or call 630.816.5917.

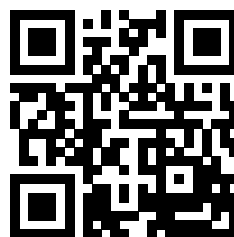
## UPCOMING: SEPTEMBER 10-19

- SUN 10 7:30am Choir Warm Up - CR  
**8:00am Worship**  
9:15am Sunday School First Day - SN  
**10:30am Worship**  
11:30am 15<sup>th</sup> Annual First Fest!
- MON 11 7:00pm Bible Matters - NX
- TUES 12 9:00am Quilters - FS  
1:00pm Dorcas Circle - UR  
1:30pm Staff Mtg  
3:30pm Knitters & Crocheters - NX  
5:00pm Stephen Ministry Class - Gloria's  
5:00pm Bells Practice - CR  
7:00pm Foundation Mtg
- WED 13 6:00am Courageous Men - FS  
6:30am Coffee With Pastor Karyn  
**10:00am Ona Terrace Worship**  
12:00pm Finance Team Mtg  
5:30pm FLY Flight Crew Mtg  
5:30pm Confirmation Dinner - FH  
**6:15pm Worship**  
7:00pm Gr 8-10 Confirmation Kick-off
- THUR 14 9:30am Sunshine Team  
7:00pm Women of the House - UR
- FRI 15 7:00pm AA - FS
- SUN 17 CLOTHES CLOSET ANNIVERSARY OF  
FIRST VISIT (2012)  
**8:00am Worship**  
9:15am Gr 6 & 7 Confirm Classes - FS  
9:15am Sunday School  
**10:30am Worship**  
11:30am Entering Middle School Milestone
- MON 18 1:00pm Elizabeth Circle  
7:00pm Bible Matters - NX
- TUES 19 9:00am Quilters - FS  
1:30pm Staff Mtg  
3:30pm Knitters & Crocheters - NX  
5:00pm Stephen Ministry Class - Gloria's  
5:00pm Bells Practice - CR  
5:15pm Personnel Team Mtg  
6:30pm Property Mngmt Team Mtg - NX  
7:00pm Vision & Leadership Team Mtg

### ROOM KEY:

CR = Choir Room    FBB = Faith Building Block    FH = Fellowship Hall  
FS = Fireside Room    MR = Mary Room    NX = Narthex  
SN = Sanctuary    TR = Thomas Room    UR = Upper Room

*For more info, visit our website at [www.FirstLutheranOnalaska.org](http://www.FirstLutheranOnalaska.org)*



*First Lutheran accepts one-time contributions electronically by credit/debit card. Use your mobile device to scan this QR code or go to [1stlu.org/give](http://1stlu.org/give).*

## SERVING:

Pastor Jason Stanton, Bread Bakers: Gloria Kubiak, Live Stream Director: Jeff Olson, Live Stream Hospitality: Jennifer Wiesjahn, Coffee Servers: Shari & Marty Hegland, Brian & Mary Narveson; Treat Providers: Zoey Sander, Paula Skoy & Travis Evenson, Deb & Bob Groshek, Sue Richason, Vocals/Guitar: Rachel Kurtz, Vocals/Guitar: Todd Saner, Keyboard: Brian Renkas, Elec. Guitar: Dick Daleki, Piano/Vocals: Gabe Hicks, Drums: Jim Knutson, Bass: Troy Birdsong

## SUNDAY, SEPT. 10, 8:00AM

Communion Servers: Audrey Vinz, Bridget Crave, Glen Vilim; Reader: Beth McDonald; Projection Leader: Jared Schaffner

## SUNDAY, SEPT. 10, 10:30AM

Communion Servers: Judy Johnson, Gloria Kubiak, Paula Skoy; Reader: Judy Johnson; Projection Leader: Randy Nedrelo

## WEDNESDAY, SEPT. 13, 6:15PM

Confirmation students serve as worship assistants

## MAKE WORSHIP HAPPEN! SIGN-UP TO SERVE AT 1STLU.ORG/NEXT

## FIRST LUTHERAN CHURCH

410 Main St, Onalaska WI 54650  
FirstLutheranOnalaska.org • office@firstlu.org  
608.783.2236 • Fax: 608.783.3741  
Office hours: Monday–Friday 8am–4pm

**Senior Pastor:** Jason Stanton  
jason@firstlu.org • 608.386.6431

**Associate Pastor:** Karyn Bodenschatz  
karyn@firstlu.org • 608.433.6002

**Director of Hospitality:**  
Kathryn Pedretti, kathryn@firstlu.org

**Nursery Coordinator:**  
Cassie Carrell, nursery@firstlu.org

**Community Impact Director:**  
Bridget Crave, bridget@firstlu.org

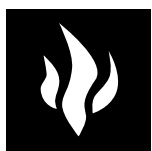
**Office Assistant:**  
Tamara Schonsberg, office@firstlu.org

**Bookkeeper:**  
Diane Finnegan, office@firstlu.org

**Director of  
Communications & Marketing:**  
Andrew Stutesman, andy@firstlu.org

**Building Maintenance &  
Grounds Custodian Supervisor:**  
Dan @@, dan@firstlu.org

**Assistant Custodian:**  
Jerry Yushta



FIRST  
LUTHERAN

# Simply Giving

Ever get to church and reach for your checkbook or envelope and realize they aren't there? Or that you just don't carry them anymore? Automating your giving means your contributions will be received on a regular basis. Set up a recurring contribution at [1stlu.org/simplygive](http://1stlu.org/simplygive), and click on the "Give Now" button to get started. Questions? Contact our webmaster at [andy@firstlu.org](mailto:andy@firstlu.org).

## READINGS

For Sunday, Sept. 10  
Matthew 18:15-20, Reproving Another Who Sins  
Pew Bible: p. 799

For Wednesday, Sept. 13  
Genesis 2:4b-25, Garden of Eden  
Pew Bible: p. 2

## PRAYERS & CARE

Flowers in the sanctuary are in memory of Gilbert 'Gib' Chick, from his family.  
Military: Jack Vilim, stationed at Fort Campbell.

*Please contact the office if you have any prayers to be lifted up:  
office@firstlu.org or 608.783.2236*

## NURSERY AVAILABLE

Members and visitors: our nursery is available for children newborn through age 4. The nursery is staffed Sunday mornings during and between services, and on Wednesday evenings during service and programming. **Please bring your diaper bag.** It will also be staffed during some church events and will be advertised as such when available. We hope you take advantage of our services while here at First.

## HOSPITAL REMINDERS

*For Gundersen:* be sure to alert the hospital of your church affiliation when they ask and they will then release your name to us when we call.  
*For Mayo/Franciscan Healthcare:* it is important that you or a family member contact us directly at the church office: 608.783.2236.  
Mayo does not give out information regarding who is hospitalized.

## PARENTS' NIGHT OUT

Bring your children for an evening of fun with the middle and high school youth groups' fundraiser! WHERE: at First Lutheran, NEXT: **Friday, Sept. 22**, FOR: Birth-12 are welcome (Birth-3 will be in the nursery, ages 4 and up in Fellowship Hall)

- Registration from 4:45pm-5:30pm
- Followed by dinner and activities till 8pm (parents can pick up early if needed)

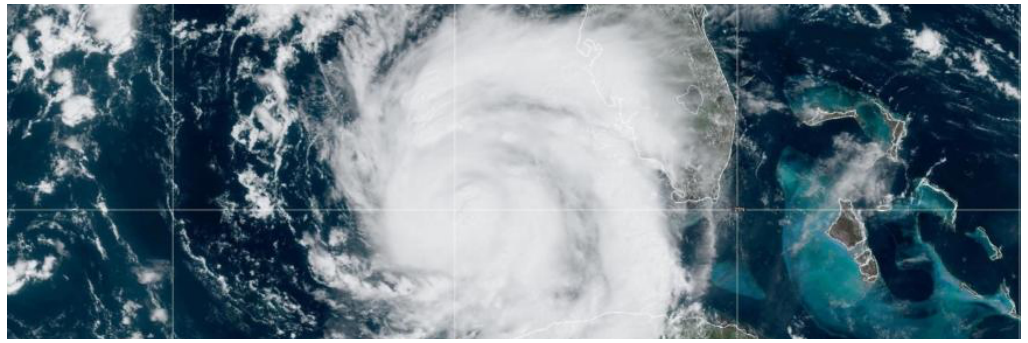
COST: Monetary donations will assist the middle and high school students with 2023 Sugar Creek Bible Camp and potential mission trip. *RSVP your child or sign up to volunteer at 1stlu.org/nightout, by Wednesday, Sept. 20.*

## BAPTISMAL PREPARATION

The next baptism preparation session will be **Saturday, Oct. 7, at 10am** in the narthex for anyone who is considering or has scheduled a baptism. *To register or ask questions call the church office at 608.783.3326 by Sunday, Oct. 1. Min. attendance required: 2 families.*

## JAZZ WORSHIP

Save the date! **Wednesday, Oct. 18**, when Jon Ailabouni is joined by Karyn Quinn on bass, Luke Thering on piano and Josh Shively on drums as they lead a jazz worship service at First. Jon has created a jazz liturgy and leads this service often. Jon is interested in creating a First Lutheran Jazz Band that would lead a jazz worship once a month on Wednesdays, Sept through May. We'd like to pull in some kids whether they're on clarinet, sax, a horn, etc. Jazz is in our future, and we'd love for you to be a part of it!



## LUTHERAN DISASTER RESPONSE HURRICANE IDALIA

### SEPTEMBER 2023

[ELCA.org/disaster](http://ELCA.org/disaster)

Hurricane Idalia, the first major hurricane to make landfall in the United States this year, brought life-threatening storm surge, flooding and winds to the Big Bend region of Florida, Georgia and the Carolinas. Idalia is just the latest disaster to impact our neighbors in the United States and around the world.

Through Lutheran Disaster Response we are prepared to serve our neighbors impacted by Hurricane Idalia even as we continue to accompany partners in Maui after the wildfires and help those experiencing other disasters. We know that recovery often takes years, and through

Lutheran Disaster Response we will be working with our partners for as long as needed. In moments such as this one, a gift to Lutheran Disaster Response provides crucial support where it's needed most.

**Gifts given to Lutheran Disaster Response equip us to respond to this, and other disasters, whenever and wherever they strike. Gifts given specifically to "Hurricane Response" will be restricted to, and used in full (100%) for those affected by hurricanes.**

.....  
Yes, I want to help!

Lutheran Disaster Response: Where needed most \$ \_\_\_\_\_ DDG0010

Lutheran Disaster Response: Hurricane Response \$ \_\_\_\_\_ DDG0087

Name \_\_\_\_\_

Address \_\_\_\_\_

City \_\_\_\_\_ State \_\_\_\_\_ ZIP code \_\_\_\_\_

Email address \_\_\_\_\_

Give through your congregation or make your check out to Lutheran Disaster Response and send to: **Evangelical Lutheran Church in America, ELCA Gifts Processing Center, P.O. Box 1809, Merrifield, VA 22116-8009** and write "Where needed most" or "Hurricane Response" on your check's memo line.





## LUTHERAN DISASTER RESPONSE U.S. WILDFIRES

**AUGUST 2023**

[ELCA.org/disaster](http://ELCA.org/disaster)

Multiple wildfires have broken out on the Hawaiian island of Maui. Exacerbated by strong winds, wildfires on Maui have claimed dozens of lives and have destroyed homes, businesses and lines of communication. Thousands of people are under evacuation orders, some moving to other Hawaiian islands. Wildfires have also affected the Big Island of Hawaii, and the islands remain vulnerable to more fires this season.

Lutheran Disaster Response is coordinating with the Pacifica Synod and other partners to

assess the needs of people impacted by the wildfires. We will work with them to provide for immediate needs and recovery amid the widespread destruction. Lutheran Disaster Response is committed to accompanying recovering communities in the years ahead.

**Gifts given to Lutheran Disaster Response equip us to respond to this, and other disasters, whenever and wherever they strike. Gifts given specifically to “U.S. Wildfires” will be restricted to, and used in full (100%) for those affected by wildfires.**

.....  
Yes, I want to help!

Lutheran Disaster Response: *U.S. Wildfires* \$ \_\_\_\_\_ DDG0077

Lutheran Disaster Response: *Where needed most* \$ \_\_\_\_\_ DDG0010

Name \_\_\_\_\_

Address \_\_\_\_\_

City \_\_\_\_\_ State \_\_\_\_\_ ZIP code \_\_\_\_\_

Email address \_\_\_\_\_

Give through your congregation or make your check out to Lutheran Disaster Response and send to:  
**Evangelical Lutheran Church in America, ELCA Gifts Processing Center,  
P.O. Box 1809, Merrifield, VA 22116-8009**

Write “U.S. wildfires” or “Where needed most” on your check’s memo line.



## NEW-MEMBER SOCIAL

By choosing to become a member, individuals and families commit to being part of a shared mission. People who would like to become members of First Lutheran are invited to a social at David Reay’s on **Thursday, Oct. 19, 6pm**, where you will get to know more about First and the staff in a relaxed atmosphere. *To register your family or ask questions, call our church office at 608.783.2236 or email [office@firstlu.org](mailto:office@firstlu.org).*

## CONNECTING WITH THE GOSPEL OF MARK

Are you looking for a connection between scripture and everyday life? Or maybe a way to dig deeper into the gospel of Mark? If so, join Pastor Libby for one or both of these opportunities: On Nov. 13 and 20, from 6–7pm, an overview of the gospel Matthew... and starting on Nov. 20 at 7pm, a year-long journey through the lectionary (our schedule of readings). Both will meet in the narthex. Cost of the yearlong class is \$20 for the devotional study book we will use.

## MAKE WORSHIP HAPPEN!

Worship assistants make worship happen! Usher, read, bake bread, serve communion, lead projection and more. *To assist with Sunday worship sign up at [1stlu.org/assistSUN](http://1stlu.org/assistSUN).*

# Small Groups

## Courageous Men

- Wed., 6am, Fireside Rm
- For men

Generally do DVD-based studies with a participant guide.

## Coffee with(out) Pastor Karyn

- Wed., 6:30am, Narthex
- Open to all

Study topics vary.

## Drawing from the Well

- 2nd Sat., 9:30am, Narthex
- For women

Gathering to be with each other, and develop a deeper relationship with one another.

## Grief Support Group

- 3rd Wed. of the month, 10am in the Upper Rm

Carrying on after the death of a loved one can be difficult and lonely. Join with others who have experienced loss. Listen and care for each other.

## Women's Circles

Join us for prayer, for service, for joy!

- Dorcas Circle 2nd Tues. 11:45am lunch, 1p.m. at church
- Elizabeth Circle: 3rd Mon. 1pm in members' homes

## Parent Share

- Sun., 9:15am, Upper Rm
- For parents/guardians/grandparents

Share what's happening in your life. It's a tough job. Don't do it alone.



*You have many ways to praise God with the gift of music!*

## Ring Bells!



Ringers practice on Tuesdays at 5pm in Fellowship Hall, and perform once a month. We

welcome widely varied musical backgrounds. No experience necessary! Do you want to be involved? *Ring 'dem Bells!* Contact Bell Choir Director Jim Knutson for more information: [jim@firstlu.org](mailto:jim@firstlu.org).

## Praise Band



Our praise band has been together for several years, and is always open to new talent. The rehearsal and performance schedule varies; contact Contemporary Music Coordinator Todd Saner for more information: [todd@firstlu.org](mailto:todd@firstlu.org).

## Senior Choir



The choir continues with their "festival" rehearsal schedule.

The next performance will be for All Saints Sunday on Nov. 5, and **rehearsals start on Wednesday, Oct. 25 at 7pm** in the sanctuary. The Senior Choir is open to all people 12 and older. There is no audition and no formal training required, just a desire to enhance worship through the beauty of music! Full schedule and sign up at [1stlu.org/choir](http://1stlu.org/choir). For more info contact Todd Saner at [todd@firstlu.org](mailto:todd@firstlu.org).





# WARMING CENTER

First Lutheran is joining with other area ELCA congregations to support the Warming Center this winter. The Warming Center is a local shelter in downtown La Crosse, that serves up to 40 guests staying over night, from November 1 — April 30. The center provides a warm place and a meal for people in our community who are without other options. It's a truly life-saving service to the guests and makes a difference in our community.

Want to provide meals for the unhoused at the Warming Center this year? Once again the area ELCA churches will be providing meals for the Warming Center the first and second Friday of each month, November through April.

For meals, make a one pot, simple meal (soup, stew, hot dish, BBQ, tacos—any simple meal) for 20 adults. Milk is also appreciated, but not required. Bread and dessert are optional. You can contact The Hunger Task Force for the ingredients, just tell them you are preparing a meal for the Warming Center. Make a meal with friends, or do it as a family.

God's work, our hands. If you can help out one or two Fridays or more, or provide a meal for 20 one or more weeks, you will make a difference.

**Sign up at [1stlu.org/warm](http://1stlu.org/warm)**  
*Questions? Contact Bridget via email ([bridget@firstlu.org](mailto:bridget@firstlu.org)) or by calling the church and asking for her.*

Bridget Crave  
[bridget@firstlu.org](mailto:bridget@firstlu.org)



## MONDAY MEALS @ TRINITY

The Monday Meals program is supported by several churches, including First Lutheran, working together to provide a free hot dinner for the north side community of La Crosse. Each church is responsible for a specific Monday, and determines their menu, procures groceries, prepares, serves, and cleans up after the 5-6pm meal.

You can help by preparing food, or serving and cleaning up.

The Hunger Task Force can supply most of the food.

The event is held at Trinity Lutheran Church, 1010 Sill Street, La Crosse  
**NEXT DATE: Oct. 16**

Contact [bridget@firstlu.org](mailto:bridget@firstlu.org) with questions or to learn more.

# Sunday School

**First Day:  
TODAY, Sept. 10!**

Between services, join us in the sanctuary as we kick off the new Sunday School year, have a chance to pick up the new academic calendar, find out what's in store for the new year, meet the teachers and check out the rooms.

Yet to register? No problem, you can still do so online at [1stlu.org/sunschool](http://1stlu.org/sunschool).

## Faith Building Block

### Grade 3: Bibles

in Fellowship Hall

**Sunday, Sept. 17 9:15am:**

parents/guardians only

**Sundays, Sept. 24 & Oct. 1:**

parents/guardians  
with children

**Sunday, Oct. 15:**

lifted up in worship

*Questions about  
Sunday School?*

*Visit [1stlu.org/sunschool](http://1stlu.org/sunschool)*



**SUNDAY, OCT. 8, 1:30PM**

The Coulee Region Hunger Walk/Run/Bike is a nonprofit dedicated to raise funds, raise awareness and end hunger among our neighbors. This year's event will be Oct. 8, starting at 1:30pm at Myrick Park. Then walk, run or bike with family and friends.

If you prefer, you can participate virtually; just remember to register online. This is a fundraiser with 30% going to the Hunger Task Force, 30% to Wafer, and 40% to your preferred food nonprofit. You are encouraged to get sponsors, or form a team for some friendly competition.

***Register at [couleeregionhungerwalk.org](http://couleeregionhungerwalk.org)  
or in person the day of the event***

## ENTERING MIDDLE SCHOOL MILESTONE

**Sunday  
September 17  
11am**

This milestone is for youth & parents/guardians transitioning from elementary to middle school, as they celebrate that each child is made in the image of God.

We will lift up this milestone in worship on Sunday, Oct. 1.

**RSVP at  
[1st.org/next](http://1st.org/next)**

# 2024 ELCA Youth Gathering

# CREATED

# TO BE MYLE Young Adult Gathering



# CONFIRMATION

## UPCOMING CONFIRMATION EVENTS

Gr 8-10  
1st Day of Small Groups  
Wed., Sept. 13, 7pm

Gr 6 & 7  
1st Day of Bible Classes  
Sun., Sept. 17, 9:15am

Operation  
Christmas Child  
Wed., Oct. 18, 7pm

Gr 10 Rehearsal Dinner  
Wed., Oct. 25, 6pm

Confirmation Sunday  
and Affirmation of  
Baptism for  
Gr 10, Oct. 29, 1pm

*Questions about confirmation?*

*Check out our confirmation page at [1stlu.org/confirm](http://1stlu.org/confirm)*

*...and/or contact Pastor Stanton at [jason@firstlu.org](mailto:jason@firstlu.org)*

The ELCA Youth Gathering is less than a year away! July 16-20, 2024... in New Orleans! The gathering is open to all youth entering 9th-12th grade in the fall of 2024, plus 2024 graduates  
Priority registration opens **SEPTEMBER 15, 2023!**

*More info: [1stlu.org/gathering](http://1stlu.org/gathering)*



*Interested? Questions?  
Contact Pastor Stanton ASAP:  
[jason@firstlu.org](mailto:jason@firstlu.org)*

## CONFIRMATION GUIDES

You don't need to know the Bible backwards & forwards & you don't need a seminary degree. Just a heart for the youth of our church & an hour each week to spend with our confirmation youth. Parents, grandparents, godparents or any faith-mature adult is welcome to facilitate conversation and build relationships between our confirmands on Wednesday nights.

*Contact Pastor Stanton to nominate someone: [jason@firstlu.org](mailto:jason@firstlu.org)*



# FIRST LUTHERAN PLAY DAYS @ SUGAR CREEK!

All are invited to First Lutheran Play Days @ Sugar Creek! There will be arts and crafts, creek stomping, horseback rides, hiking, playing disc golf, Bible study, campfires and time shared with others!

**October 6, 7, and 8.** If you've never been to Sugar Creek, this is your best chance! Come for one, two or no nights. You could just come for a day trip. And you don't have to have kids in order to come. This is inter-generational time! First Lutheran is willing to cover 50% of the costs, so it will never be more affordable.

There are cabins & rooms with AC and personal bathrooms as well as an area for RV/campers. Meals and the costs of counselors are included in the cost, too.

Whether you are going for one night, both nights, just one day, just one meal, or even just for worship on Sunday the camp needs to know in order to plan appropriately and safely, so register at [1stlu.org/playdays](http://1stlu.org/playdays), or call the camp at 608.734.3113.

*You can also find more info online at [1stlu.org/playdays](http://1stlu.org/playdays).*



*All of this and more on the web at [www.FirstLutheranOnalaska.org](http://www.FirstLutheranOnalaska.org). See also...*

facebook.com/1stlu  1stlu.org/cal  
instagram.com/1stlu  youtube.com/1stlu  
twitter.com/1stlu  #faithalive365