

GOOD NEWS!

OCTOBER 2017

All of this and more on the web at
www.FirstLutheranOnalaska.org

SEE ALSO...

[facebook.com/1stlu](https://www.facebook.com/1stlu)
[instagram.com/1stlu](https://www.instagram.com/1stlu)
twitter.com/1stlu
[1stlu.org/cal](https://www.1stlu.org/cal)
[issuu.com/firstlu](https://www.issuu.com/firstlu)
[pinterest.com/firstlu](https://www.pinterest.com/firstlu)
[#faithalive365](https://www.facebook.com/faithalive365)

MESSAGE FROM PASTOR STANTON



Thank you! to the almost 150 people who attended a focus group meeting in September. The leadership at First held ten meetings over three weeks to determine whether it seems feasible for our congregation to move forward into a capital campaign. Whether or not you were able to attend, I hope you make time for a one-on-one conversation this month or perhaps in November with a friend from church. It is time for

every member of our family of faith to address the needs of our facility, get rid of all our debt, create a reserve fund for future property needs and increase our Foundation (endowment) principle so that First can be even more generous to the community for generations to come. It is an *exciting* time at First as we meet the needs of our building, our staff and our community.

But *exciting* is almost always accompanied by *anxiety*. Inevitably, when a church talks about money,

many will express feelings of anxiety, which many times sound like anger or frustration. Each and every member will be *invited* to support the campaign. But some will hear that *invitation* as a 'command.' So, please understand that supporting this fall's campaign is NOT required. No commands are being sent from some secret-filled back room. First Lutheran has openly discussed and planned for a capital campaign since 2014 when it was included in the

Continues on page 2

Our Church + Our Time

Sunday School is canceled! 6th & 7th Grade Confirmation is canceled!

Small Groups will take a break! Because it is...

Our Church + Our Time

Join us for a kickoff event where we will launch our capital campaign!

SUNDAY, OCTOBER 15

9:00am
Brunch & Treats
for the whole family

9:30am
"Our Church + Our Time"
Keynote Address

10:00am
The BIG
Announcement

After brunch, kids will play lots of games led by Youth Director Jared Oelke and Young Youth Director Beth Miller, while adults stay for the program in the sanctuary. The nursery will be staffed throughout the event. *Join us!*

INSIDE

- 2 Readings for October
- 4 Small Group Ministry
- 6 Readings for October
- Finance Committee Report

- 7 Announcements
- 8 Bells European Tour
- Synod Reformation 500 Pep Fest
- 9 Lifetouch Church Directory
- Photo Sessions

- 9 Art & Spirituality Retreat
- in Chicago
- 10 Events
- Sugar Creek Events
- 12 Blood Drive
- 13 Serve & Give

- 14 Preschool
- 15 Sunday School
- Young Youth
- 16 Confirmation



Evangelical Lutheran Church in America
God's work. Our hands.

**...in the case of
First Lutheran, for
150 years
our faith has
outshone
our doubt.**

**Our excitement
about where we want
to go has been
much stronger
than our anxiety
about how we will
get there.**

don't agree that our staff are doing their jobs well enough to be paid well? What if people don't care about the mortgage or the needs of the building? What if our members would rather support other institutions because they don't trust/like this one for whatever reason? And what will that mean for First Lutheran's future?

Excitement and anxiety tend to be in the presence of each other like faith and doubt; like satisfaction and desire. One rarely exists without the other. But in the case of First Lutheran, for 150 years our faith has outshone our doubt. Our excitement about where we want to go has been much stronger than our anxiety about how we will get there. Among the 1,500+ members of this congregation, we have more than enough money, energy and hope to be the Church we feel called to be. I am excited to invite you to reach beyond your anxieties so that, in 2020 we will be able to celebrate a new beginning for our mission and ministry!

strategic plan, which was printed for every member at First.

When I think of where this church could be in 2020 as we celebrate First Lutheran's 150th anniversary, I get excited. We could have leak-free roofs, a parking lot that won't crumble any time soon, new carpet and a smoke alarm system that is worthy of our children (and up to code). Our staff could be paid for what they are worth, not simply what they are willing to take. The mortgage could be gone. And the Foundation (endowment) could start being a source of great pride among our membership because of all the large annual gifts its interest revenue could provide for local and global needs.

But on the flip side of my excitement is anxiety. What if our membership



Pastor Jason Stanton
jason@firstlu.org

READINGS FOR OCTOBER

10/1	Sunday	Romans 6:1-11, Matthew 28:16-20
10/4	Wednesday	Matthew 21:23-32
10/8	Sunday	Exodus 20:1-21, Matthew 5:17-48
10/11	Wednesday	Matthew 21:33-46
10/15	Sunday	Philippians 2:5-11, Mark 9:14-29
10/18	Wednesday	Matthew 22:1-14
10/22	Sunday	Psalms 118, Matthew 6:5-15
10/25	Wednesday	Matthew 22:15-22
10/29	Sunday	Romans 6:1-14, Mark 2:1-12

Above are the tentative readings scheduled for October.

Readings used during worship are determined by the pastors on a weekly basis, and therefore are subject to change.

You can also view this list online and subscribe to receive them as an email at 1stlu.org/readings.

New Member Small Group

First has new-member groups
for all who are desire to
join our church family!

The small group starts
Sunday, October 22, 5pm

Register by contacting the office:
608.783.2236 / office@firstlu.org

MESSAGE FROM PASTOR KARYN

"Do you not know that all of us who have been baptized into Christ Jesus were baptized into his death? Therefore we have been buried with him by baptism into death, so that, just as Christ was raised from the dead by the glory of the Father, so we too might walk in newness of life. For if we have been united with him in a death like his, we will certainly be united with him in a resurrection like his."

St. Paul, in his letter to the Romans



These words of Paul's have been echoing in my head for the past two weeks as my heart and soul try to make sense of the death of

Steve Schultz, a man I was just getting to know better, a husband to one of my closest friends, a father to one of my dearest littles. These are words from scripture, words we speak in our funeral liturgy, words I often say to those who mourn. I know these words by heart but they are more than words I have learned by rote, they are words that have settled into my heart over the years and I now lean on as I struggle to understand the death of a 39-year-old man.

As I stand in this place of grief and in the moment of our church life together that is the end of a summer and beginning of the fall, I am terribly thankful for the words we speak in our liturgy that have become the words I know by heart. As we enter into a year of exploring By Heart, I find myself also thankful for our theological understanding as Lutherans. These words of Paul's are to be treasured but not only because they are pretty words but because of the understanding of God, the theology, that is behind them.

They remind me of promises that are so easy to forget just about any day, but most especially in times of stress or distress. That is what this year is about. Learning that happens not only in the head but also in the heart because the heart is where faith lives. The heart is the one who reminds me that Steve will be raised, just like Jesus. The heart is the one who reminds me that God has known Steve before he was even knit in his mother's womb and is written on the palm of God's hand. The heart reminds me that I am not alone in my grief and neither is Steve's family.

In the midst of a whole host of unknowns and deep grief and the finality of death, the only thing we can do is turn to our God.

It has been a week since I wrote those opening paragraphs, and I sit in my friend's apartment in Grand Teton National Park. "I lift my eyes to hills, from where does my help come from" from Psalm 121 is what has been spoken and prayed as my friends and I deal with another unexpected death, this time of our friend Megan. Those words came so easily, being surrounded by the majesty of the Teton Range. In the midst of a whole host of unknowns and deep grief and the finality of death, the only thing we can do is turn to our God, and the ancient words spoken by our ancestors in faith who know, just as we do, that our

God is a faithful and just. This knowing comes from living our faith and speaking our own words into the world filled with grief and pain and suffering.

To do that, we need to know, by heart, our God and the words of our ancestors. To know the stories, to add our own and to trust in the communion of saints, the resurrection of dead and live everlasting. Really, By Heart is all about living in the promises spoken to us through Jesus so that we know them without even thinking about it, living By Heart means living each day as loved people.

Steve was loved, Megan was loved, countless others I have known were loved and are loved. In this season of my life, I am so thankful for them and their stories and their living as loved people that sustain me each day. Friends of First, let our lives be so characterized, that people remember and know their God and the love of that God, no matter where life takes them. Let us be the kind of people that others give thanks for our presence in their lives or the lives of their loved ones. Let us be a people, whose light so shines that others see our good works and give glory to our God in heaven.

Pastor Karyn Bodenschatz
karyn@firstlu.org

Parish Internship Committee

A parish internship committee is being formed to serve our Vicar Tara Shilts. The committee of 5-8 people meets once a month and exists to give feedback directly to Vicar Tara in an informal, reflective way. Vicar Tara already receives critique and instruction from her supervisor, Pastor Stanton. This is your opportunity to offer leadership as we explore First's role as a teaching congregation. Contact Pastor Stanton if you are interested in raising up a leader in ministry:
jason@firstlu.org.

2017 SMALL GROUPS

Weekly Groups:

Coffee with
Pastor Karyn

Courageous Men

Knitters

Parent Share (*Sun & Wed*)

Quilters

Sunday Morning
with Coffee

Monthly Groups:

Creative Circle

Drawing from the Well

Grief Support Group
(*daytime & evening*)

Frolic!

OWLs
(*Older, Wiser Lutherans*)

Deborah Circle

Dorcas Circle

Elizabeth Circle

Naomi Circle

Rebekah Circle

By Heart...

- Churchwide
- 7 weeks,
Oct. 1–Nov. 18
- Numerous
times available;
sign-up in the narthex
- All are welcome

Join with the rest of the congregation in a study of Luther's Small Catechism. This is a great chance to meet other members and learn from and share with each other. ***Sign-up in the narthex or online at 1stlu.org/byheart***

Courageous Men

- Wed., 6am, Fireside Rm
- For men

Generally do DVD-based studies with a participant guide.

Coffee with Pastor Karyn

- Wed., 6:30am,
Uptowne Cafe
- Open to all

Study topics vary.

Parent Share

- ***NEW OPTION!...***
Sun., 9:15am or
Wed., 9:45am, Upper Room
- For parents/guardians/
grandparents

Share what's happening in your life. It's a tough job. Don't do it alone.



Sunday Morning with Coffee

- Sun., 9:15am, Sept.–May,
in the Mary Room
- Open to all

Join with other adults for a weekly year-round small group that meets each Sunday in between worship services for a variety of studies. We generally watch a video followed by discussion. We also participate in church-wide studies a few times a year. This is a great way to get to know other people in the congregation, even if you can't make it every week.

Women's Circles

Join us for prayer, for service, for joy!

- Elizabeth Circle: 3rd Mon. 1pm
in members' homes
- Naomi Circle: 3rd Tues. 9am
in members' homes
- Dorcas Circle 2nd Tues.
11:45am lunch,
1p.m. at church
- Rebbekah Circle:
Every other Wed.
9:30am at Perkins
- Deborah Circle:
3rd Thur. 9am at Panera,
10am at church

PARENT share

**Coming
together to
pray and talk
about raising
our children
faithfully**

**Sundays at
9:15am or
Wednesdays
at 9:45am**

**Both session
in the Upper
Room (201)**

**Contact Carla
Stanton for
more info**



THE WARMING CENTER is located at 413 S 3rd St in downtown La Crosse.

The center's mission is to work with the greater La Crosse community to better serve those experiencing homelessness with dignity and respect by providing a safe and warm place for homeless adults 18 years and older to get in out of the cold during the winter months from Nov. 1–Apr. 30. To keep the doors open, hundreds of volunteers from area churches and the community are needed to staff the center.

Volunteers are needed to serve each night, November 1 to April 30

OVERNIGHT VOLUNTEERS

Our most significant need for volunteers is on overnight shifts from 9:00 pm-3:00 am and 3:00 am-8:00 am. These can be combined into one 9:00 pm-8:00 am shift as well. The nights that need the most help are Mondays, Wednesdays, 2nd and 4th Thursdays, and Fridays. We need 2-3 people in the Warming Center for the whole night. If you are interested in helping us fill any of these needs, email Mark Schimpf at mschimpf@cclse.org or call 608.519.8020.

WOMEN'S RETREAT
Fri., Oct. 20, 7pm thru
Sun. morning, Oct. 22



Relax, meet other women, go for a hike, curl up by the fire with a good book, and more!

Go to sugarcreekbiblecamp.org for event brochure and registration form

Scrip



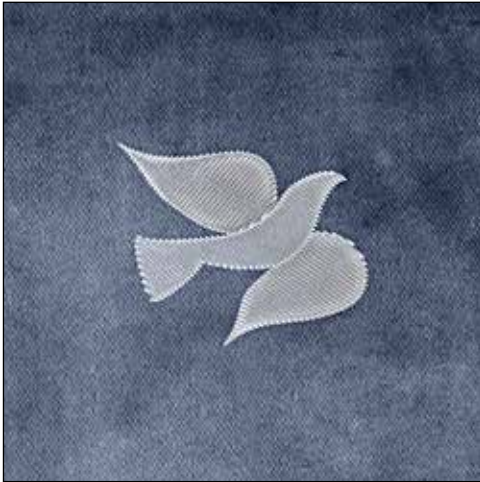
KWIK TRIP



festival

WOODMAN'S MARKETS
SUPPORTS COMMUNITY

Help support our youth by using gift cards instead of cash!! A percentage of your shopping will go toward helping the youth pay for their mission trips, camp trips, and other youth ministry events. For sale in the narthex between services or in the office during weekdays, 8–4pm. More info: 1stlu.org/scrip



In the last five years, more than 500 teens have accessed needed clothing: casual clothes, business attire, winter jackets, summer shorts, shoes, accessories, socks, and toiletries. Since its Sept. 17, 2012, opening as Acts 20:35, what is now known as the First Teen Clothes Closet has partnered with the Boys and Girls Club, Hope Academy, the Children's Clothes Closet, social workers, teachers and counselors to provide adolescents in our community with clothes they need and can feel good about wearing, thanks to our own youth who volunteer dozens of hours to sort and approve the donations we receive.

A few numbers that illustrate the impact The First Teen Clothes Closet has— in just 8 months this year, we provided more than:

- 250 pairs of pants, capris and shorts
- 300 shirts, sweaters and hoodies
- 50 dresses
- 150 pairs of socks
- 50 toothbrushes

And 140 pair of shoes for teens and older children distributed at an annual event on the North Side of La Crosse.

Our guests have come from down the street, and as far away as Winona, Minn., Independence, Sparta, and Viroqua.

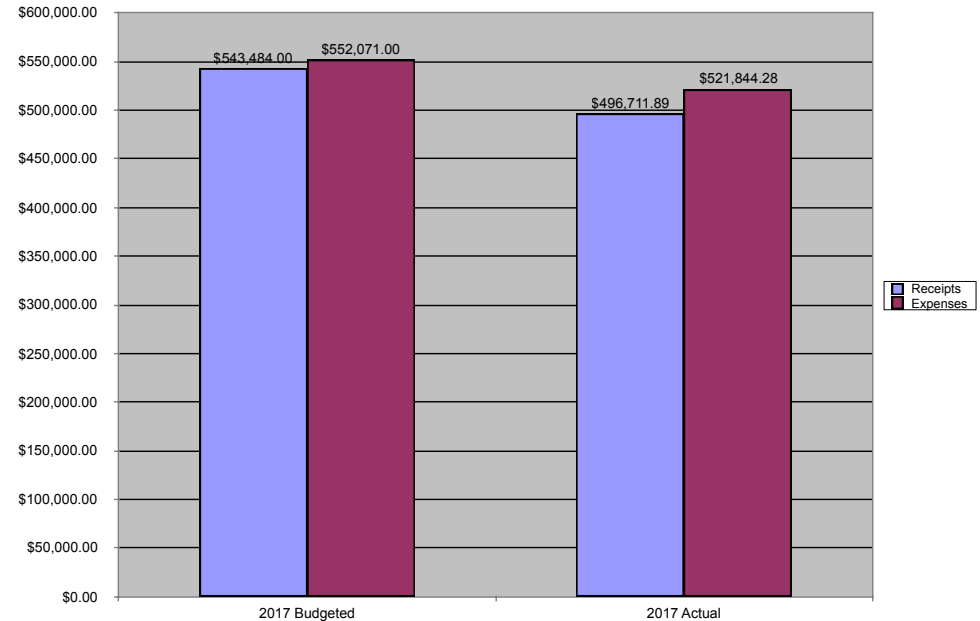
This service is only possible because of the support of the faithful volunteers who give their time to host appointments, sort donations, drive the shuttle, shop for special needs and mend torn items.

Because of your generosity we are able to provide these teens with the clothes, shoes and dignity they need and deserve. Thank you!

*First Teen Clothes Closet
Steering Committee
Bridget Crave
Lori Lunney
Patty Shepard
Shari Hegland*

PS: We are always looking for additional volunteers interested in helping out. There are needs for individuals to sort, organize and hang donations; shop for snacks and other needs; host appointments; and drive the van for Monday night shuttles from Trinity Lutheran in La Crosse. Volunteers don't have to be members of the church—bring a friend and serve together. Contact a steering committee member or the church office if you are interested or have questions.

www.firstlu.org/clothescloset
[facebook.com/1stteencloset](https://www.facebook.com/1stteencloset)
closet@firstlu.org



The following is a financial summary through the end of August:

Actual Receipts -
\$496,711.89

Budgeted Receipts -
\$543,484.00

Actual Expenses -
\$521,844.28

Budgeted Expenses -
\$552,071.00

Our total receipts through the end of August fell short of the current year budgeted amount by \$46,772.11. Our total giving (envelope giving, debt reduction and other miscellaneous offerings) falls short our current year budgeted amount by \$42,198.98 or 9.1%.

As noted above, our expenses are less than budgeted through the end of August by \$30,226.72. A significant portion of this is due to the timing of certain expenses.

In summary, we budgeted for a deficit of \$8,587.00 through the end of August and have realized an actual deficit of \$25,132.39.

As always, full details of this report are available by request in the church office. Also, everyone is welcome to attend a finance committee meeting—we meet every month, on the second Wednesday at noon in the Thomas Room.

Respectfully,

Finance Committee

FAMILY PHOTOS: A CLOUD OF WITNESSES

All Saint's Day has long been a day when the church gives thanks for all the saints, the beloved, who have died, especially in the past year. In the coming weeks, we will be asking for photographs of your beloved dead so that we can be surrounded by their witness on All Saint's Day. These pictures can be sent electronically (karyn@firstlu.org) or brought in. They will be printed as 4X6, so resolution should be such that they can be printed well from what you submitted. If your loved one was a member of our congregation and died this past year, you will receive a letter from Pastor Karyn with a special request.

All Saint's Day isn't only about those who have died but also about those who have been newly baptized. If your child was baptized this past year, you also will receive a letter from Pastor Karyn with a special request.

Please note, we will continue to use the photos submitted last year, so no need to resend those photos.

BAPTISMAL PREPARATION



A baptism preparation session will be Saturday, October 7, at 10am in the narthex for anyone who is considering or has scheduled a baptism.

To register or ask questions call the church office, 608.783.3326.

NEW-MEMBER SMALL GROUP

By choosing to become a member, individuals and families commit to being part of a shared mission. People who would like to become members of First Lutheran are invited to a three-week introduction to the church, presented in a small-group setting. The group will meet in the evening on **Oct. 22, Oct. 29, and Nov. 2**. To register your family or ask questions, call our church office at 608.783.2236 or email office@firstlu.org.

WE CELEBRATE THE GIFT OF HOLY BAPTISM

- **Andrew Baumgart**

WEDDINGS

God's blessings to...

- **Heather Handel & David Jordan**
- **Krista Mortenson & Mason Clark**

SUBMITTING NEW ANNOUNCEMENTS

To have your announcement in the monthly newsletter, send it to newsletter@firstlu.org, or give it to Andy in the office. Deadline for the newsletter is always noon on the 15th of the each month.

To have your announcement in the weekly announcements pages handed out each weekend, send it to announcements@firstlu.org, or give it to Andy in the office. Deadline for the weekly announcements is always noon each Wednesday.

SYMPATHY TO THE FAMILY & FRIENDS OF REV. PAUL ROE

We lift in prayer the family and friends of Rev. Paul Roe, who died September 11, 2017, in Bloomington, MN. Rev. Paul Roe was pastor at First from 1962-1976. The funeral was on Saturday, September 16, at Bethlehem Lutheran Church, in Minneapolis. If so desired, memorials may be directed to the Paul Roe Scholarship Fund at Luther Seminary, Lutheran World Relief, or St. Olaf College. Condolences may be shared at gillbrothers.com.

GIFTS AND MEMORIALS

Thank you for the following memorials:

In memory of DeVera Yonkovich

- Illumination of the stained glass window: Bob & Bev DiNicola
- Sunday School: Lee & Yvonne Cade
- Undesignated: Erving Horman, Bob & Katy Wood, Judy & Merrill Wachter

Thank you for the following gifts:

- Back-to-school shoes: Jacob Breiling, Carol Chroninger, Bob Dean & Bev Larson, Elizabeth Circle, Vicky & Harry Helfrich, Peg Hickok, Larry & Marilyn Schreiner

HOSPITAL REMINDERS

For Gundersen: be sure to alert the hospital of your church affiliation when they ask, and they will release your name to us when we call.

For Mayo/Franciscan Healthcare: it is important that you or a family member contact us at the church office: 608.783.2236. Mayo no longer lets churches know who is a patient at their hospital.

DESIGNATED FUNDS

Each month, First Lutheran gives thanks for gifts offered to designated funds. If you plan to make a special gift to First, consider these options. Currently we are gathering funds for:

- Lutheran Disaster Relief
- Lutheran World Hunger
- Youth Fund (supports campers & mission trippers)
- Helping Hands Fund (for First members in need)
- Samaritan Fund (for non-members in need)
- Seminarian Fund
- Sugar Creek Bible Camp
- The Property & Grounds and the Music & Worship Teams also have wish lists. Contact Pastor Stanton to inquire how your gift to either Team could support the ministry of First Lutheran.

GO GREEN

We offer two e-mail lists for subscribing:

- **First Lutheran Publications:** which includes e-mail links to our e-newsletter, so if you request to stop receiving this paper in your hands, this will save natural resources, and helps First save money on supplies and postage.
- **First Lutheran Updates & Publications:** all of the above plus several updates from our website.

To subscribe to either one and to cancel the delivery of this paper copy, simply visit 1stlu.org/subscribe and fill out the online form, or contact the office at office@firstlu.org.

Coulee Region Ringers
European Tour July 2018
to Germany and France

Don't miss out on this once in a lifetime opportunity to join the La Crosse area bell choir to **tour Europe from July 17-27, in 2018!**

Stay with host families in Germany and France on this wonderful 11 day trip. The choir will play 3-4 mini concerts, but mostly will enjoy the sights and sounds of these two magnificent countries. The trip is not filled up yet with ringers, but you can go even if you don't ring!

Ringers and all who are interested should contact jim@firstlu.org or 608.498.8829 for more information about this amazing chance to visit Europe!



Freed & RENEWED
in Christ 500
YEARS OF GOD'S
GRACE IN ACTION

Pep Fest

**An afternoon of German food, fun, and
Festivities to celebrate the
500th Anniversary of the Reformation**

Saturday, October 21, 2017

Noon – 3 pm

Tomah American Legion

800 Wisconsin Ave, Tomah

Adults \$15, Children 4-12 \$8, under 4 free

Pre-registration required by October 13th
with the La Crosse Area Synod office:
608-788-5000 or office@lacrosseareasynod.org

Sponsored by Peace Lutheran Church, Tomah, and
the La Crosse Area Synod, ELCA

PRESERVE YOUR MEMORIES



Printed professional portraits endure for generations

Be a part of our upcoming photography event.

Be yourself. Classic, casual, musical, sporty, fun – it's up to you!

Make it special. Bring meaningful items and special people too!

Share your story with family and friends. Portraits are great gifts.

Each family receives a complimentary 8x10 and a free directory for participating! You will have the opportunity to purchase additional portraits for yourself, family and friends.



Sessions run from Oct. 11–21
Schedule yours today at
1stlu.org/lifetouch

LifeTouch
Connecting You through
Family Photography

Art and Spirituality Retreat in Chicago

November 17–18, 2017

Join Pastor Karyn to learn and practice Visio Divina, the spiritual practice of praying with images. The group will visit the Art Institute in Chicago in addition to other sites. You will also have some free time to shop, sight see, or rest. Traveling by van, the group will leave Friday morning, November 17, at 7:30am, returning to Onalaska Saturday evening around 10pm. Some optional group meals will be planned in advance of the retreat.

Costs including transportation to Chicago, hotel (share a double room) and Art Institute entrance fee; total cost approx. \$200. Meals will be extra. Contact Bridget Crave with questions: bridget@firstlu.org

Register online at 1stlu.org/artic



SUGAR CREEK BIBLE CAMP

2017 ADULT BUS TRIPS

- **Oct. 1-7:** Washington D.C. and Gettysburg Tour
- **Nov. 21:** Fireside Dinner Theatre: "Miracle on 34th St."

YESTERDAY'S YOUTH

Monday, Oct. 2 & Dec. 4, 9am-3pm

Join others from the region for a day of excellent speakers, music, a great meal and fellowship with over 100 guests. Call to reserve your space!

6-8 GRADE RETREAT

October 6-8

If you've been missing camp and can't wait to come back, then this retreat is for you! Come hang out at camp with your favorite camp friends and staff for 3 days of games, hiking, Bible study, worship, campfires and all your other favorite camp activities. Retreat runs from 7pm Friday to 1pm Sunday.

WOMEN'S RETREATS

October 20-22

Ladies, this retreat is just what you need: time away from the stresses of work and home in intentional fellowship with other women. Our women's retreats offer meaningful sessions with topics pertinent to today's Christian women. As the seasons change and leaves fall, we will take time to join other women and explore the theme: "Letting Go." Our featured speaker, Carla Stanton, is a certified Spiritual Director and will lead us through various exercises to discover where God is working in our lives. We will consider the things we might need to let go of in order to make room for new growth. Go to camp website for more info & reg.

3-5 GRADE RETREAT

October 28-29

Come join us for a time of fun and faith exploration. Enjoy time away with your favorite camp friends and Sugar Creek counselors playing games, singing songs, worshipping together and studying the Bible. This October retreat is filled with fun, fall activities! Retreat runs from 1pm Saturday to 1pm Sunday.

EVENTS

Sign up for most events happening at First Lutheran on our website at 1stlu.org/signup

PARENT SHARE: NOW WITH WED OPTION!

Starting October 4, join Carla Stanton, member of First, certified spiritual director and mom of three, **in room 201 every Wednesday morning, 9:45-10:45am.** (*The Sunday Parent Share will also continue to meet at 9:15am between Sun. worship*). For Parent Share we will simply come together to pray and talk about raising our children faithfully. Childcare is available, too, for all children who are not yet attending school.

DRAWING FROM THE WELL

Next retreat: Sat., October 14, 8:30-10:30am at Panera

This group is for women of First and the greater La Crosse area seeking to support one another in their spiritual growth. We gather together once a month on Saturday mornings to be with each other, enjoy a breakfast, and develop a deeper relationship with one another. Come and get to know other women of the church, or renew friendships. *RSVP to bridget@firstlu.org*

FAITH ALIVE! CREATIVE CIRCLE

It is a scientific fact that exercising our creative muscles has all sorts of health benefits. It is also a scientific fact that gathering with people has all sorts of health benefits. It seems our ancestors knew these two things together can only mean good things for individuals and communities, so we are bringing back the "sewing" circle with a modern twist. Enter the Faith Alive Creative Circle, a gathering of people working out their creative muscles. All are welcome to bring whatever project you are working on and enjoy fellowship while doing it. We will also have, from time to time, a shared project so that we can learn new things from each other. We meet the 3rd Monday of each month from 6-9pm in Fellowship Hall, October through May. Join us! **Next meeting: October 16.**



13141 Sugar Creek Bible Camp Rd, Ferryville, WI 54628

608.734.3113 • camp@sgrcreek.org • www.sugarcreekbiblecamp.org

WITH IRMA, "EVERYONE WHO'S EXPECTED TO BE A RESPONDER WILL BE A VICTIM ALSO"

By John Potter September 8, 2017



Presiding Bishop Elizabeth Eaton and Joseph Chu, Lutheran Disaster Response associate program director, lead a conference call with synod staff and Lutheran Social Services staff on preparation plans for Hurricane Irma.

Just as Hurricane Harvey long-term recovery efforts begin in Texas and Louisiana, Hurricane Irma threatens devastation as it moves toward Florida and the Carolinas. But even before the storms hit, the ELCA was mobilized and on the ground.

Bishops have maintained close communication with their congregations, pastors and deacons. Lutheran Social Service agencies have mobilized their networks. And Lutheran Disaster Response (LDR) has been in regular contact with its local affiliates.

Today, ELCA churchwide staff and representatives from partner organizations met in person and by phone to discuss collective relief efforts after Harvey, as well as what to anticipate with Irma—which has already had catastrophic effects in the Caribbean and the Virgin Islands—and

how to meet the needs of the affected communities.

"This could potentially be a real blow to the infrastructure of the state and our ability to respond," said Sam Sipes, CEO of Lutheran Services Florida (LSF). "We're going to be dealing with a situation where everyone who's expected to be a responder will be a victim also."

As Irma approached, LSF, which serves nearly 500,000 people each year, has been in touch with clients to ensure that they have safety plans in place.

OPENING THEIR DOORS

Several staff members from the Southeastern and South Carolina synods reported that congregations and camps were planning to open as shelters or donation collection locations for evacuees. Congregations in Puerto Rico have opened their doors to congregations in the U.S. Virgin Islands.

The Southeastern Synod has been working closely with Lutheran Services of Georgia (LSG) and its own disaster response coordinators along the Georgia coast. John Moeller, CEO of LSG, shared his gratitude to ELCA congregations that have offered to shelter staff and clients as the storm possibly moves inland.

GeoRene Jones, justice and advocacy ministries coordinator for the North Carolina Synod, reported that the synod had churches setting up to be shelter sites in the Charlotte area. She also said she hears from congregation

members on a nearly hourly basis asking how to help.

Several staff pointed out the importance of congregations connecting with their county emergency managers if they wish to set up as shelters.

MEMBER RESPONSE

In reporting on Hurricane Harvey recovery, Jessica Vermilyea, director of disaster response for Upbring (formerly Lutheran Social Services of the South), said, "It's the beginning. It will be a long journey."

The Texas-Louisiana Gulf Coast Synod will hold a Harvey workday tomorrow, with several hundred expected to serve.

LDR staff emphasized that members and congregations looking to donate supplies should make sure they are items that have been specifically requested. Affected members and congregations can register donation needs with the National Voluntary Organizations Active in Disaster.

The most effective way to donate to relief efforts for Harvey or Irma, barring a specific item request, is often through a financial gift, LDR staff said. Donation response from ELCA members so far has been "amazingly gracious," said Daniel Rift, director of ELCA World Hunger and Disaster Appeal, adding, "One hundred percent of what comes in to us goes out into the field. This is a critical moment, and people are really rising to the occasion."

Congregations seeking worship resources in times of hurricanes can find them here.

CHURCH TOGETHER

Michele Hilton, assistant to the bishop for administration in the Florida-Bahamas Synod, said each of the synod's congregations along the shore had been boarded up and weekend services had been canceled. "We've not seen an evacuation as serious as this one," she said.

Hilton also reported that all of the synod's rostered ministers have shared safety plans with their congregations.

Ted Goins, president and CEO of Lutheran Services Carolinas (LSC), agreed that evacuation preparations have been well-executed. "There's been more preparation and communication for this than ever before," he said, citing partnership between LSC, his synod, LDR and Upbring.

"These weather events present a degree of complexity and scale that is unprecedented," said Elizabeth Eaton, ELCA presiding bishop. "The professionalism, experience and compassion [of disaster-response staff] is remarkable. I am grateful for their efforts. But even more impressive is all of us coming together. We truly are 'church together.'"

John Potter
Content Editor
livinglutheran.org

LUTHERAN DISASTER RESPONSE
HURRICANE IRMA

SEPTEMBER 2017

ELCA.org/disaster

Hurricane Irma was one of the most powerful storms ever recorded in the Atlantic. On the heels of Hurricane Harvey, the storm hit the Caribbean and southern United States, leaving widespread damage in its wake.

As a church, we're standing by our neighbors who have been affected as they begin the long road to recovery. Lutheran Disaster Response's affiliates are collaborating with community leaders and government officials to respond. Please give now to support this response.

Your gifts ensure that our church will be able to provide help and hope for those whose homes have

been devastated or who have been otherwise affected by Hurricane Irma for years to come.

Unfortunately, Hurricane Irma was not the first major hurricane with catastrophic effects this season, and it may not be the last.

To give to the hurricane response where funds are needed most, select "Hurricane response" below. To give directly to relief efforts for Hurricane Irma, select "Hurricane Irma" below.

Your gifts will be used entirely (100 percent) for direct response. Give now to support survivors of disasters.

.....
YES, I WANT TO HELP!

☐ Lutheran Disaster Response: *Hurricane response* \$ _____ DDG0087

☐ Lutheran Disaster Response: *Hurricane Irma* \$ _____ DDG0088

Name _____

Address _____

City _____ State _____ ZIP code _____

Email address _____

Give through your congregation or make your check out to
Lutheran Disaster Response and send to:

Evangelical Lutheran Church in America, ELCA Gift Processing Center
P.O. Box 1809, Merrifield, VA 22116-8009

Write "Hurricane response" or "Hurricane Irma" on your check's memo line.



Evangelical Lutheran Church in America
God's work. Our hands.



BE A HERO

**First Lutheran Church-
Onalaska Blood Drive**

Tuesday, November 14, 2016

12:30pm - 5:30pm

**Location: First Lutheran Church- Narthex of the
church, 410 Main Street in Onalaska**

Visit bcw.edu/firstluthona or call Diane Shuda
608-386-4270
to make an appointment.

HOSPITALITY DREAMERS



I have this daydream about welcoming all into our church, where everyone is greeted with a warm welcome, help is given when needed and no one feels lost as they try to find where they need to go. I have a team in place to help me dream of how we can accomplish welcoming all into our church and helping worshippers get ready to worship enabling them to go out to serve others using the gifts God has given them.

The Hospitality Leadership is that team. We will conduct our first hospitality audit of our church, and then, in the next few months, come up with a plan to make our church an even more welcoming place. Our job is making sure our visitors are follow-up with, nursery is well staffed and safe for your youngest ones, greeters are trained and parking lot ministry is established, just to name a few. Our Hospitality Leadership Team will help me come up with a schedule to make sure hospitality is covered within our church. They will help maintain the welcome center, oversee and train our Hospitality Action Teams and maintain systems for following up with visitors and members alike. Their major responsibility is to provide guidance on ways to make our members and visitors feel welcomed and known.

As we dream about what our church can look like, we will look at all the places within our church where hospitality takes place. We will look at our parking lot, signage outside, landscaping, condition of the building etc. We will walk through the narthex, sanctuary, observing how we do coffee connection, checking

Hospitality isn't just greeting at the door and having a welcome center, it includes and has a part in all that we do here at First.

out the classrooms, bathrooms, the nursery. We will look for things that most of us just pass by, and we will look for better ways to do hospitality. Hospitality isn't just greeting at the door and having a welcome center, it includes and has a part in all that we do here at First. Sometimes this seems overwhelming, but as the team works together planning for hospitality, we can do a piece of that plan little by little to improve the way we make all our members and visitors feel welcomed and known.

Thank you for those who have stepped up and are a part of this Hospitality Leadership Team. I so look forward to seeing how God will work within us and among us as we use the gifts given to us by the Holy Spirit to make First a welcoming church.

Kathryn Pedretti
Director of Servant Ministries
kathryn@firstlu.org

GO AND DO LIKEWISE LUKE 10:37

SUNSHINE BOYS

The Sunshine Boys meet at First Lutheran on the **first Thursday of the month at 9am** to help with outdoor or indoor projects. Rolls and coffee are supplied to replenish your reserves! Dues are free!

NEWSLETTER ASSEMBLY


It's a relaxing way to volunteer!
Friday, October 27, at 9am,
to assemble the November newsletter.
See you there!

HELPING HANDS

If you need help with small jobs around the house or if you need a couple of meals or groceries delivered, just go to the "Helping Hands" board by the nursery and make out a slip with a description of what you need help with and your telephone number. Then anyone who thinks they can help can take the slip and call the number to work out the details. This ministry is open to all in need of help AND to those who can provide the help. There is no set group of "helpers" so we need involvement from all who can be a blessing to someone else. Thanks!

WELCOME BASKETS

Welcome baskets are a way to welcome a new neighbor into your neighborhood. The baskets are a gift bag tied with a bow and are filled with goodies from church and from our community. They are available to sign out at the Resource Center across from the church office.



If you know of someone who needs a caregiver, speak with Pastor Karyn or call the church office.



PRESCHOOL

UPDATE

We are back to school! We are excited to welcome Beth Miller as our 4K teacher and Ms. Stoll as our assistant teacher. We are blessed to have them in our preschool!

We spent the month learning classroom routines, making new friends and becoming independent. We are looking forward to our field trip to Ferguson's Apple Orchard! And a lot more is happening in the month of October!

Melissa



First Lutheran Preschool
410 Main Street, Onalaska, WI 54650
608.779.4504 • preschool@firstlu.org
Preschool Director: Melissa Rolbiecki
4K Teacher: Beth Miller
Preschool Assistant Teachers:
Marci Leppert, Tracy Stoll

Sunday School

Sunday, October 22

3- & 4-Year Olds
Sing at 8am Worship

frolic

Sun., Oct. 29, 9:15am, Rm 102

Faith Building Blocks

Grade 3: Bibles

Sundays, Oct. 1 & 8: parents/
guardians with children

Sunday, Oct. 15: Faith Building
Block lifted up in worship

3-year Olds: Praying Together

Sunday, Oct. 15: parents/
guardians only

Sundays, Oct. 22 & 29: parents/
guardians with children

Sunday, Nov. 5: Faith Building
Block lifted up in worship

Throughout the year each age group will have a special "Faith Building Block" session in which parents or special adults are asked to attend class with their child on Sundays at 9:15am, sharing in conversation and growing together in faith. The session lasts for three weeks, and afterwards children will have a presence in worship in celebration of the Faith Building Block they have learned.

We are under way for Sunday School! If you need to register yet, please let me know, and we can get you on the list.

What I am most excited about this year is the wonderful Sunday School teachers we have on board leading our children! Faithful adults are so important to your children's Faith Formation! It is wonderful to have a large Sunday School as we can experience the time together growing in our faith with a whole bunch of grace!



www.wearesparkhouse.org

We are using SPARK curriculum! I highly recommend that you look at the materials and even the store as you will find great gifts! If you are interested in the lesson that we are discussing each week in the classroom, I would be happy to have that available, too. It is a great way to open the discussion at home about Sunday School. Also, if you find something that would be a great addition to Sunday School or each classroom, make sure I know about it!

Take a look at the schedule.

If you need anything or have questions please let me know!

Gratefully,

Beth

New registrations welcome any time of the year!

Contact Sunday School Superintendent Beth Miller at sundayschool@firstlu.org
or stop in the Sunday School office in room 206.

YOUNG YOUTH

If you are in 2nd-5th grade then this is your club!
All are welcome!

Below is part of a conversation I was having with parents about raising children.

"Navigating parenthood? So many adults and children out and about are like magnets, drawn to drama, quickly joining in, echoing judgments, passing on gossip and forming negative opinions. People constantly walk this line of making choices that won't make us stand out, because if you do stand out, you'll quickly attract critics."

Parents and children alike need a sense of spiritually that can only happen when people pause, turn off the noise, move away from the screens, and have time to be aware of God with adults leading by example. I think of young youth ministry as a place where youth can come to be in an intentional culture where all are welcome, there is no judgment, and there is always grace.

Look for events coming soon! Faith Families, Service Events and Young Youth Group!

Gratefully,

Beth

Contact Beth Miller at beth@firstlu.org
for info or with questions!

MIDDLE SCHOOL MILESTONE

lifted up in worship
October 8

Congratulations to our
6th graders and parents
who spent the past 3
weeks working through
the Middle School
Milestone!

CONFIRMATION REHEARSAL DINNER

October 25, 6–8pm

AFFIRMATION OF BAPTISM (CONFIRMATION)!!

October 29, 1:30pm

Come celebrate with our
hard-working youth
as they confirm
their baptism vows on
Reformation Sunday.

UPCOMING CONFIRMATION EVENTS

Gr 6 Middle School Milestone
Sunday 9:15am, Oct. 1 & lifted up
in worship Sunday, Oct. 8

Gr 6 Confirmation Bible Class
Sundays, 9:15am, starting Oct. 8

Gr 7 Confirmation Bible Class
Sundays, 9:15am

Gr 8 & 9 Small Groups
Wednesdays, 7:00pm

Apostle's Creed
Wednesdays, 5:00pm
October 4, 11, 18 November 1, 8

Stewardship
Sundays 9:15am, October 1 & 8

Death and Dying
Mondays, 4:00pm
October 23, 30 & November 6

**The Gospel
According to Harry Potter**
Thursdays, 6:00pm
October 26 & November 9

**Sugar Creek
Middle School Retreat**
Fri., October 6 – Sun., October 8

Confirmation Rehearsal Dinner
Wednesday, 6:00pm, October 25

Affirmation of Baptism
Sunday, 1:30pm, October 29

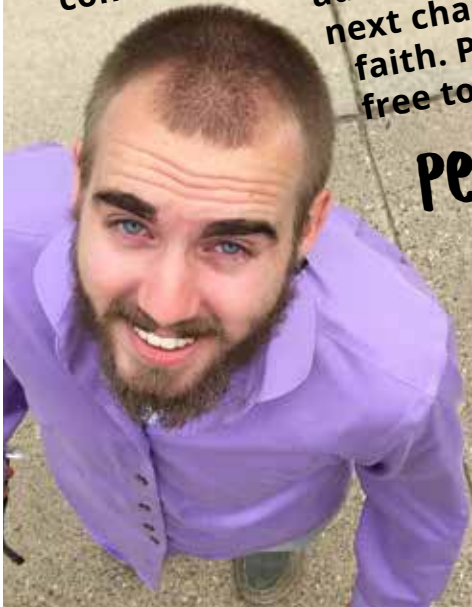
UPCOMING YOUTH EVENTS

GREETINGS!

My name is Jared, and I am First Lutheran's new Youth Director. I was raised in the La Crosse area and love being able to call this place my home. I am finishing a degree in Servant Leadership at Viterbo University to help equip me to best serve the faith community and beyond. My interests include hiking, drumming, snowboarding, biking, dancing in the rain, and baking. I look forward to new relationships, conversations, experiences, and adventures in this next chapter of my faith. Please feel free to say hello!

Peace!

Jared
Oelke



SUGAR CREEK MIDDLE SCHOOL RETREAT

October 6–8

Friday 6pm–Sunday 2pm

If you miss camp and can't wait to come back, then this retreat is for you! Hang out at camp with your favorite camp friends and staff for 3 days of games, hiking, Bible study, worship, campfires and all your other favorite camp activities.

Contact Jared with any questions & for more information: jared@firstlu.org

HIGH SCHOOL YOUTH GROUP 2.0!

**Every Sunday evening
6:30–8:30pm**

in the Mary room

Join us weekly for a time of fellowship, spiritual discussion, games and more. Come whenever you can, and bring some friends along, too!



Contact Jared with any questions:
jared@firstlu.org / 605.431.3421



OWLS

OLDER WISER LUTHERANS



The OWLs took great advantage of the nice weather in September. We attended the La Crosse storytelling festival on a wonderful afternoon, heard some great stories and music. We finished the month with a beautiful afternoon on the Narvesons' deck with good food and wonderful poetry.

October will begin with what promises to be a beautiful drive down the Mississippi to Sugar Creek Bible Camp to attend Yesterday's Youth. Sugar Creek has a fascinating program lined up for us. Historian Dick Campbell will do two presentations. The first is "Building the Erie Canal," followed by "The Klondike Gold Rush." We have

heard Dick speak before, and he does a wonderful job making history come alive with stories and slides. After a delicious lunch, we will be entertained by the "High-Lo-Men" Barbershop Quartet and the "Just for Fun" Men's Quartet. This promises to be a program not to be missed. The date of this event is **Monday, October 2**. We will leave the church promptly at 8 AM and return by 3pm. Please notify Brian Narveson by Sunday night, October 1, if you plan to attend (owls@firstlu.org or 608-526-9700). Cost is \$10.

The OWLs October potluck will be **Wednesday, October 18, at noon** in the Narthex. The program is still in the planning stage; watch your email box for up to date information. Come for the food and fellowship. We always have a good time.

The OWLs are a group at First that welcomes anyone, First Lutheran members or not, who are 55+.

For information or to ask questions, contact Brian Narveson at owls@firstlu.org.

KAYWOS

KAYWOS cloths
"Klean Anything
WithOut Streaks"
are available for sale
from the
church office
during office hours
Mon.–Fri, 8am–4pm

*Proceeds help with
purchases not
covered by the
budget*

OCTOBER AT FIRST LUTHERAN *see also weekly events list on back*

Sunday	Monday	Tuesday	Wednesday	Thursday	Friday	Saturday
1 By Heart: Conversations with Luther's Sm... 9:15 AM Gr 3 FBB: Bibles 9:15 AM Gr 6 Middle School Milestone 9:15 AM Stewardship Confirmation Class	2 8 AM OWLS Fly to Yesterday's Youth at Sugar Creek 7 PM Women of the House Sml Grp 7 PM AA - FS	3 1:15 PM Staff Meeting 5:30 PM Bells Practice - Sacristy 6:30 PM Stephen Ministry Mtg - MR	4 8:30 AM First Teen Clothes Closet Mtg 5 PM Apostle's Creed Cnfrm Cls - Rm 207 7 PM By Heart Small Group - UR 8 PM Praise Band Rehearsal - SN	5 9 AM Sunshine Boys 11 AM By Heart Small Group 1 PM Grief Support Group - UR 7 PM Grief Support Group - Gloria Kubiak's home	6 Sugar Creek Middle School Retreat 7 PM AA - FH	7 10 AM Baptismal Preparation - NX
8 Sugar Creek Middle School Retreat Gr 6 Middle School Milestone, Lifted Up i... 9:15 AM Gr 3 FBB: Bibles 9:15 AM Stewardship Confirmation Class 7 PM Hospitality Leadership Team	9 7 PM Women of the House Sml Grp 7 PM AA - FS	10 LifeTouch Church Directory Photo Sessions 1 PM Dorcas Circle - NX 1:15 PM Staff Meeting 3:45 PM Worship & Music Team - NX 5:30 PM Bells Practice - Sacristy	11 12 PM Finance Team Mtg 5 PM Apostle's Creed Cnfrm Cls - Rm 207 7 PM By Heart Small Group - UR	12 11 AM By Heart Small Group	13 7 PM AA - FS	14 8:30 AM Drawing from the Well Group - Panera
15 Grade 3 Faith Building Block: Bibles, lifted... Newsletter Deadline 9:15 AM 3-Yr Old FBB: Praying Together	16 1 PM Elizabeth Circle 6 PM Faith Alive Creative Circle - FH 7 PM Women of the House Sml Grp 7 PM AA - FS	17 9 AM Naomi's Circle 1:15 PM Staff Meeting 5:15 PM Personnel Team Mtg 5:30 PM Bells Practice - Sacristy 6:30 PM Stephen Ministry Mtg - MR 6:30 PM Vision & Leadership Team Mtg	18 LifeTouch Church Directory Photo Sessions 12 PM OWLS Potluck - NX 5 PM Apostle's Creed Cnfrm Cls - Rm 207 7 PM By Heart Small Group - UR	19 10 AM Deborah's Circle - NX 11 AM By Heart Small Group	20 Sugar Creek Women's Retreat 7 PM AA - FS	21
22 Sugar Creek Women's Retreat 8 AM 3- & 4-Year Olds Sing at Worship 9:15 AM 3-Yr Old FBB: Praying Together 9:30 AM Visitor Follow-up Meeting 5 PM New-member Session #1	23 4 PM Death & Dying Cnfrm Cls - FS 7 PM Women of the House Sml Grp 7 PM AA - FS	24 1:15 PM Staff Meeting 5:30 PM Bells Practice - Sacristy	25 6 PM Confirmation Rehearsal Dinner 7 PM By Heart Small Group - UR 7 PM Visitor Follow-up Meeting	26 11 AM By Heart Small Group 6 PM The Gospel According to Harry Potter - FS	27 9 AM Newsletter Assembly - NX 7 PM AA - FS	28
29 9:15 AM 3-Yr Old FBB: Praying Together 9:15 AM Frolic! - Rm 102 1:30 PM Affirmation of Baptism / Confirmation Worship 5 PM New-member Session #2	30 4 PM Death & Dying Cnfrm Cls - FS 7 PM Women of the House Sml Grp 7 PM AA - FS	31 1:15 PM Staff Meeting 5:30 PM Bells Practice - Sacristy	1 8:30 AM First Teen Clothes Closet Mtg 11 AM All Saints Worship 5 PM Apostle's Creed Cnfrm Cls - Rm 207 7 PM By Heart Small Group - UR	2 9 AM Sunshine Boys 11 AM By Heart Small Group 1 PM Grief Support Group - UR 4 PM A.C.T.S. Prayer Model Cnfrm Cls 7 PM New-member Session #3 - Blue Moon 7 PM Grief Support Group -	<div> <div>SEPTEMBER</div> <div> <div>12</div> <div>3 4 5 6 7 8 9</div> <div>10 11 12 13 14 15 16</div> <div>17 18 19 20 21 22 23</div> <div>24 25 26 27 28 29 30</div> </div> <div> <div>NOVEMBER</div> <div> <div>1234</div> <div>5 6 7 8 9 10 11</div> <div>12 13 14 15 16 17 18</div> <div>19 20 21 22 23 24 25</div> <div>26 27 28 29 30</div> </div> </div> </div>	

weekly events for
OCTOBER
at First Lutheran

SUNDAYS

*Sunday events that meet between
worship will not meet on Oct. 15*

8:00am Worship

9:15am By Heart Sml Grp - House

9:15am Gr 7 Bible Class - FS

9:15am Sun Morning w/ Coffee
Small Group - NX

9:15am Sunday School

10:30am Worship

12:00pm Capital Campaign
Steering Committee Meeting - FS

6:30pm By Heart Small Group -
Jill & Mark Davidson's Home

6:30pm HS Youth Grp 2.0 - MR

WEDNESDAYS

6:00am Courageous Men - House

6:30am Coffee w/ Pastor Karyn -
Uptowne Cafe, Caledonia St., La Crosse

9:15am Parent Share

6:15pm Worship

7pm Gr 8 & 9 Small Groups

7pm Choir Practice - SN

CALENDAR KEY

CR = Choir Room
FBB = Faith Building Block
FH = Fellowship Hall
FS = Fireside Room
LG = Lounge
MR = Mary Room
NX = Narthex
SN = Sanctuary
TR = Thomas Room
UR = Upper Room

*Events subject to change; up-to-date
information at 1stlu.org/cal*

*Subscribe to our Google calendar at
1stlu.org/calsub*



Sugar Creek Middle
School Retreat
Fri, Oct 6–Sun, Oct 8



Baptismal Prep
Sat, October 7
10am–Noon



Drawing from the Well
Sat, October 14
8:30–10:30am



Creative Circle
Mon, October 16
6–9pm



Sugar Creek
Women's Retreat
Fri, Oct 20–Sun, Oct 22



Reformation 500
Pep Fest
Sat, October 21
Noon–3pm

410 Main St.
Onalaska, Wisconsin 54650
608.783.2236
Fax: 608.783.3741
office@firstlu.org
www.FirstLutheranOnalaska.org

WORSHIP SCHEDULE

Sunday 8:00 & 10:30 AM
Wednesday 6:15 PM

SUBMITTING NEW ANNOUNCEMENTS

To have your announcement in the monthly newsletter, send it to newsletter@firstlu.org, or give it to Andy in the office. Deadline for the newsletter is always noon on the 15th of the month.

To have your announcement in the weekly announcements pages handed out each weekend, send it to announcements@firstlu.org, or give it to Andy in the office. Deadline for the weekly announcements is always noon each Wednesday.

First Lutheran is a congregation of the
Evangelical Lutheran Church of America (ELCA)



Evangelical Lutheran Church in America
God's work. Our hands.

STAFF DIRECTORY

Jason Stanton	Senior Pastor	608.386.6431	jason@firstlu.org
Karyn Bodenschatz	Associate Pastor	608.433.6002	karyn@firstlu.org
Tara Shilts	Vicar		tara@firstlu.org

Bridget Crave	Director of Small Group Ministry.....	bridget@firstlu.org
Kathryn Pedretti.....	Director of Hospitality	kathryn@firstlu.org

YOUTH/EDUCATION STAFF

Cassie Carrell	Nursery Coordinator	nursery@firstlu.org
Beth Miller	Sunday School Superintendent	sundayschool@firstlu.org
	Young Youth Director	beth@firstlu.org
Cindy Beach	Confirmation Administrative Assistant	cindy@firstlu.org
Jared Oelke	Youth Director	jared@firstlu.org

SUPPORT STAFF

Tamara Schonsberg.....	Office Assistant.....	608.783.2236	office@firstlu.org
Andy Stutesman	Director of Communications & Marketing.....		andy@firstlu.org
Mike Peper.....	Head Custodian		mike@firstlu.org
Jerry Yushta	Assistant Custodian		
Mark Koenig.....	Assistant Custodian		

MUSIC STAFF

Gabriel Hicks	Organist	gabe@firstlu.org
Jim Knutson	Bell Choir Director	jim@firstlu.org
Todd Saner	Senior Choir Director & Contemporary Music Coordinator	todd@firstlu.org

PRESCHOOL STAFF

Melissa Rolbiecki.....	Preschool Director	608.779.4504	preschool@firstlu.org
Beth Miller	4K Teacher		beth@firstlu.org
Marci Leppert.....	Preschool Assistant Teacher		
Tracy Stoll.....	Preschool Assistant Teacher		

VISION & LEADERSHIP TEAM

Larry Schreiner	President
Aaron McDonald	Vice President
Jennifer Wiesjahn	Secretary
Diane Shuda	
Paula Skoy	
Shaun Gibbs	
Todd Lofald	



410 Main Street
Onalaska, WI 54650
608.783.2236
www.FirstLutheranOnalaska.org

WORSHIP SCHEDULE

Sunday 8:00 AM
10:30 AM
6:15 PM
Wednesday



Scan to download
this newsletter to
your smart phone
or tablet



Go green!
Scan to subscribe
to the newsletter
online



Evangelical Lutheran
Church in America
God's work. Our hands.
edition: October 2017

NON PROFIT ORG
POSTAGE PAID
ONALASKA, WI
PERMIT #15

ADDRESS SERVICE REQUESTED

To stop delivery: email andy@firstlu.org or call office at 608.783.2236

FAITH ALIVE!
AT FIRST LUTHERAN

GOOD NEWS

OCTOBER 2017

Our Church + Our Time

**SUNDAY
OCTOBER 15
9AM**
MORE DETAILS INSIDE

#faithalive365