



GOOD NEWS! MARCH 2018

All of this and more on the web at
www.FirstLutheranOnalaska.org

SEE ALSO...

[f facebook.com/1stlu](https://www.facebook.com/1stlu)
[@ instagram.com/1stlu](https://www.instagram.com/1stlu)
[t twitter.com/1stlu](https://twitter.com/1stlu)
[1stlu.org/cal](https://www.1stlu.org/cal)
[i issuu.com/firstlu](https://www.issuu.com/firstlu)
[p pinterest.com/firstlu](https://www.pinterest.com/firstlu)
[#faithalive365](https://www.facebook.com/1stlu)

MESSAGE FROM PASTOR STANTON



On Friday, March 23, our Young Youth group: Kindergartners—2nd grade from 5–7pm and our 3rd–5th graders from 6:30–8pm—will eat together and “take a walk through Holy Week”. I love how this event will help these kids and their families anticipate the amazing story of Jesus being celebrated on Palm Sunday all the way to dying on Good Friday and rising on Easter Sunday. I hope our Young Youth Director, Beth Miller, is overwhelmed with the great number of families who choose to make this evening a part of their Holy Week celebration. (You could

ease her overwhelming feelings by ‘signing up’ ahead of time, but that isn’t necessary, either.)

First Lutheran does many things well, but during Lent and Holy Week we are at our best. Wednesdays during Lent we sing the beautiful Holden Evening Prayer. And during Holy Week, we worship every evening (and some mid-days) for a service of healing, a service of prayer for the nations, Maundy Thursday, Good Friday and more. Our sanctuary is made to look special. The musical offerings sound special. Being in worship each day feels special. Leaders at First make

Continues on page 2

MESSAGE FROM PASTOR KARYN



It was the morning after Christmas before the sun rose, and, as is my habit, I had been reading. Nothing of note as I was giving my brain a rest after a full week. As the sun rose over the bluffs, I found myself in a pondering mood. It isn’t unusual for me after Christmas to turn my thoughts toward reflection and planning. This particular morning I was thankful for this early-morning routine that opened a door to watching the sun rise because it gave pause to consider where light and life is in my world and maybe where I wanted to see

more. I found my mind turning toward companionship and love.

It is no secret that I have the best friends, they are life and light in my world and often they are what sustain me when I am sure I can’t go another step. They are the kind of friends who encourage and challenge, laugh and cry with me. They pray for me, they listen to my crazy ideas and help me find ways to make them come to fruition. For all that they are however, I never thought I would be 46 and never married.

When I was younger all I ever wanted to be was a wife and mother.

Continues on page 4

LENT

*Wednesdays,
through March 21*

11:00am Lenten worship

11:45am Light lunch in narthex

6:15pm Lenten worship

HOLY WEEK

**Palm Sunday, March 25,
worship at 8:00am & 10:30am**

Pancake breakfast,
no Sunday School nor Confirmation

**Monday, March 26
worship at 6:30pm**

**Tuesday, March 27
worship at 6:30pm**

**Wednesday, March 28
worship at 6:30pm**

**Maundy Thursday, March 29
worship at 12:15pm & 6:30pm**

**Good Friday, March 30
worship at 12:15pm & 6:30pm**

**Sacred Storytelling Worship
March 31, worship at 6:30pm**

**Easter Sunday, April 1
worship at
7:30am, 9:00am, and 10:45am,
No Sunday School nor Confirmation**

*The office will be closed at noon on
Friday, March 30 and
all day Monday, April 2.*

INSIDE

- 2 Readings for March
- 3 Blood Drive
- Easter Flowers Form

- 4 Justice & Peace Stations of the Cross
- 5 Events
- Sugar Creek Events
- 6 Finance Committee Report
- 7 First Lutheran Foundation Report

- 7 Serve & Give
- 8 Message from
Presiding Bishop Eaton
- First Teen Clothes Open House
- 9 Announcements
- 10 OWLs Post

- 11 Preschool
- 12 Sunday School
- Young Youth
- Talk A Walk (Through Holy Week)



Evangelical Lutheran Church in America
God's work. Our hands.

**We celebrate Lent,
Holy Week and Easter
to remember where
our confidence
comes from.**

**Come to worship
with us each day
during Holy Week
and you may
find it difficult to
remain the same.**

extraordinary efforts to make Holy Week special because of all the weeks of the year, Holy Week is worth our attention. The entire season of Lent creates space for Christians to ponder the good news that "the reign of God is upon us." In Holy Week, we see what that reign looks like. We see how God responds to sin, death and the power of the devil. We see how God uses God's Love-Power as he not only confronts the powers of this world. God defeats them.

The membership of First Lutheran care about their families, friends and community. Our membership seek to advocate for the suffering who live both near and far. We have our own struggles and seek to serve others through their challenges. Where do we get the strength to care, advocate and serve? Why would we imperfect people think we have anything to offer such vast problems? What confidence can we have that we aren't just wasting our precious time and resources? We celebrate Lent, Holy Week and Easter to remember where our confidence comes from. Come to worship with us each day during Holy Week and you may find it difficult to remain the same.



Pastor Jason Stanton
jason@firstlu.org

Sun, Mar 4	John 2:13-22
Wed, Mar 7	John 18:12-27
Sun, Mar 11	John 3:14-21
Wed, Mar 14	John 18:28-40
Sun, Mar 18	John 12:20-33
Wed, Mar 21	John 19:1-16a
Sun, Mar 25	Mark 11:1-11 or John 12:12-16 Mark 14:1-15:47 or Mark 15:1-39, (40-47)
Mon, Mar 26	John 12:1-11
Tue, Mar 27	John 12:20-36
Wed, Mar 28	John 19:16b-22 John 13:21-32
Thu, Mar 29	John 19:23-30 John 13:1-17, 31b-35
Fri, Mar 30	John 19:31-42 John 18:1-19:42
Sat, Mar 31	Matthew 27:57-66 or John 19:38-42

*Above are the tentative readings scheduled for March.
Readings used during worship are determined by the pastors on a weekly basis,
and therefore are subject to change.*

*You can also view this list online and subscribe to receive them as an email at
1stlu.org/readings.*

BLOOD DRIVE



First Lutheran Church - Onalaska Blood Drive Thursday, April 5, 2018 12:30pm - 5:30pm



Location: First Lutheran Church- Narthex of the church 410 Main Street in Onalaska





Visit bcw.edu/firstluthona or call Diane Shuda 608 386-4270 to make an appointment.

**Appointments encouraged.
Walk-ins welcome.**



bcw.edu

Please bring a photo ID with your birth date

 [facebook/bloodcenterofwisconsin](https://www.facebook.com/bloodcenterofwisconsin)
 [twitter/bloodcenterwi](https://twitter.com/bloodcenterwi)

#ImAHero

Post your selfie on BloodCenter of Wisconsin's facebook page or twitter with #ImAHero

Be a Hero, Donate Blood

BLOODCENTER
of WISCONSIN™
PART OF VERSITI

**EASTER
FLOWERS**



Your gift of \$15 to the Easter Fund will be used to purchase flowers to beautify the sanctuary on Easter Sunday. Any remaining contributions will go towards purchasing new paraments.

Please complete the information below and return it to the office no later than **Sunday, March 25.**

Please print clearly.

In honor of:

In memory of:

Gift given by:

*Those who donate may take home a pot of flowers after the last service on Easter Sunday, or pick one up from church during office hours the following week.
Thank you!*

Justice & Peace Stations of the Cross

*Is this the year to start
a new Good Friday tradition?*

Join with others from the community and First for the Spirituality Center's annual Justice and Peace Stations of the Cross. This form of the Way of the Cross is a silent prayer walk from the heart of La Crosse to the Mississippi River. Along the way, we stop to pray and sing at places that represent suffering in our community and world today. The two-mile walk recalls the journey of Jesus as he carried his cross to Calvary. Adults, students and families are all welcome to experience this special Good Friday event **on March 30, at 10am.**

Meet in front of the St. Rose sign on the corner of Market Street and Franciscan Way. If folks from First would like to share a ride, meet in the church parking lot at 9:15am.

More info:
1stlu.org/jpstations



As I grew older and my horizons expanded, these two things were still at the heart of who I wanted to be. When I entered seminary, I told God that I better find a husband, too, 'cause there was no way I could do this stuff on my own. God did not deliver in the ways I expected, and I must have been more self-aware than I knew because there have been times when I have not been able to do it all. There is something about that life-partner that transcends a friendship, at least that is the perception from this side of the fence, that makes life a little easier to live. So my question that early second day of Christmas was about what I wanted in a relationship and if I wanted to try to enter the dating pool again. Which, can I say, is rather terrifying and daunting. A beginning that comes with lots of expectations and nervous energy. Not to mention, whomever catches my eye has a lot to live up to because have I mentioned I have the best friends?

Companionship and connection have long been themes, for the lack of a better word, of my study and my own self-work. Being single and childless in this world is not easy; it takes extra work to find ways to connect with people, to seek commonalities, to engage in conversation around topics of interest, to attend events that sometimes make you feel even more alone than before. It can be exhausting, and some days, some days I wish I could turn off my heart and brain for just a little bit. Through it all, what I know to be true is that we are each hard-wired for connection, and we will find that connection in surprising ways if we are open.

And I am not alone in my quest. I have found, as I talk with people on my visits for the capital campaign, that people desire more meaningful connection, especially within their faith

**For most of us,
what we know
and experience now
is pretty good...
yet there is more
to be had—
more love,
more grace,
more joy,
when we gather
in community.**

community. So what is it that keeps us from building deeper connection? I think it may be similar to my own hesitations about dating. It requires work that can often be exhausting and terrifying. For most of us, what we know and experience now is pretty good, so why mess with a good thing? And yet there is more to be had—more love, more grace, more joy, when we gather in community.

Here we are, at the beginning of a new year, a logical and beautiful moment to consider beginnings, connections, possibilities for light and life. The poet and author, Ted Loder, writes in his prayer poem the following:

God of history and my heart, so much has happened to me during these whirlwind days...

You know my frail heart and my frayed history—and soon another day begins.

O God, help me believe in beginnings and in my beginning again, no matter how often I've failed before.

Help me to make beginnings...

Help me to be a beginning for others...

Help me to believe in beginnings, to make a beginning, to be a beginning

So that I may not just grow old, but grow new each day of this wild amazing life you call me to live with the passion of Jesus Christ. Amen.

For full text go to 1stlu.org/TedLoder

I don't know if I will start dating again this year, I am still pondering and working up the courage. What I do know is that I will be seeking more connections, to make beginnings, to trust my frail heart and frayed history to God. Wondering and hoping and trusting that the Spirit will guide me and provide for me what I need. What beginnings are waiting for you in this new year?

Pastor Karyn Bodenschatz
karyn@firstlu.org

REGISTRATION FOR ALL SUMMER PROGRAMMING IS OPEN!

Your child or grandchild can have an amazing new experience this summer with the caring staff and beautiful creation of Sugar Creek! Now is the time to register, before your desired week fills up. Popular programs fill up fast! Register today to reserve your spot!

NOW HIRING

Sugar Creek Bible Camp is now hiring for 2018 summer staff! More info at sugarcreekbiblecamp.org.

6-8 GRADE RETREAT

March 16-18

Do you miss camp and can't wait to come back? Here is your chance! Come hang out with your favorite camp friends and Sugar Creek Counselors for 3 days of games, hiking, Bible study, worship, campfires, and loads of other FUN camp activities! Retreat runs from 7pm Friday to 1pm Sunday.

YESTERDAY'S YOUTH

Monday, April 9, 9am-3pm

Join others from the region for a day of excellent speakers, music, a great meal and fellowship with over 100 guests. Call to reserve your space!

3-5 GRADE RETREAT

April 14-15

Join us at Sugar Creek for a time of fun and faith exploration. Enjoy time away with your favorite camp friends and Sugar Creek Counselors playing games, singing songs, worshipping together, and studying the Bible. Retreat runs from 1pm Saturday to 1pm Sunday.

CRAFTER'S RETREAT

April 26-29

Calling all stampers, scrappers, quilters or whatever your craft! Get away for a weekend dedicated to working on your craft and enjoy some of our programming like campfires, devotions, worship, and more. We'll give you half of an 8 ft table, plenty of good food and a place to lay your head. Just bring yourself, bedding, toiletries and all your supplies. We'll have morning and evening devotions and a worship service on Sunday. Cost and registration form at www.sugarcreekbiblecamp.org.



EVENTS

Sign up for most events happening at First Lutheran on our website at 1stlu.org/signup

CAKE POP CLASS

"A cake pop is a delightful, delicious pop of pure sweetness."

Monday March 5th 6-8pm. Laura's cake pops are made by crumbling and compressing a baked cake until it is smooth and fudge like in consistency. Then it is molded into fun shapes or balls, covered in chocolate or candy coating and served on a stick. With a full selection of flavors, and a variety of ice cream sundae toppings, Laura's cake pops bring a creative and delightfully tasty flair to any event or gathering. Now YOU can come learn how to make them!! Everything will be provided for you; just bring something to carry them home in. \$18 per person or \$30 per 2 people. Children are welcome with an adult. Preregistration required: 1stlu.org/baking

PRESCHOOL OPEN HOUSE

First Lutheran Preschool provides developmentally appropriate early childhood education in a warm child-centered Christian environment. We offer Christian preschool sessions in the morning on Mon/Wed/Fri, Tue/Thur and Monday-Friday for ages 30 months and up. We are also a partner with the Onalaska School District, and we are a site for the 4-year-old preschool (4K). 4K runs Monday-Friday in the morning and includes busing. In addition there is Lunch Bunch Mon-Fri.

Take a tour at our open house on **Thursday, March 8!** Call or email First Lutheran Preschool Director Melissa Rolbiecki with any questions: 608.779.4504 / preschool@firstlu.org

Check us out on Facebook: facebook.com/flponalaska

New-Member Small Group

First has new-member groups for all who are desire to join our church family!

The small group starts **Sunday, April 15, 5:30pm**

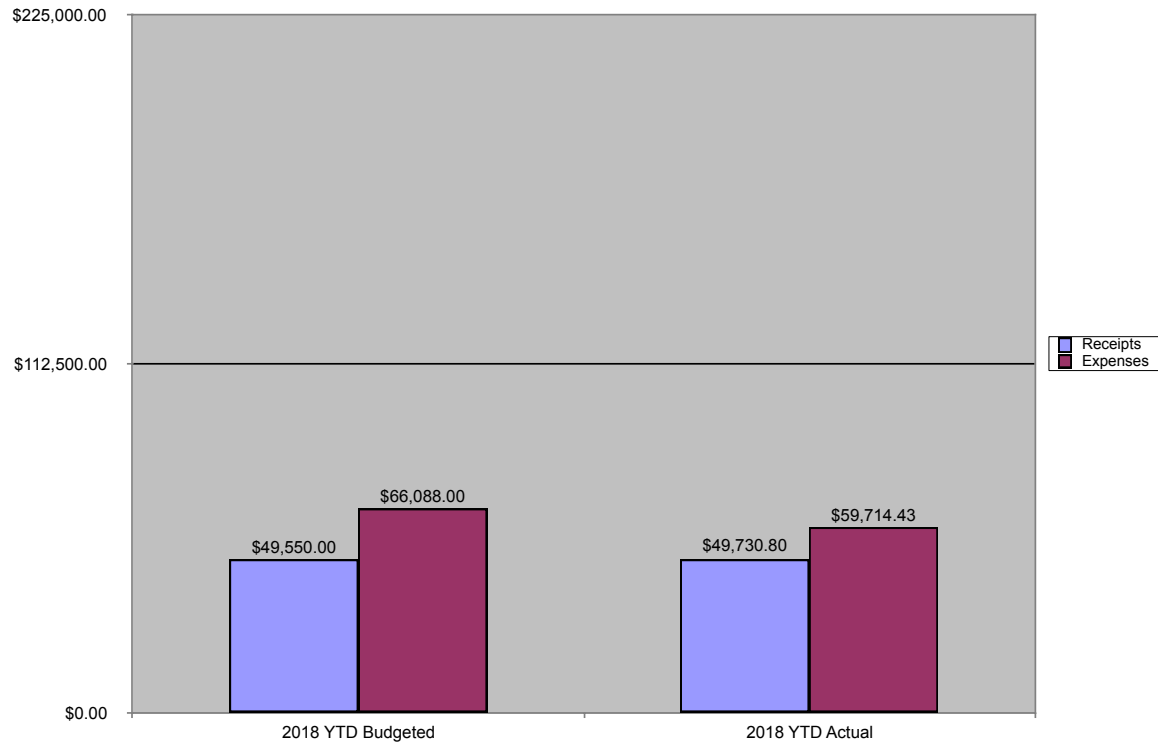
Register by contacting the office: 608.783.2236 / office@firstlu.org

13141 Sugar Creek Bible Camp Rd, Ferryville, WI 54628
608.734.3113 • camp@sgrcreek.org • www.sugarcreekbiblecamp.org

FINANCE COMMITTEE REPORT

Annual Giving

In the course of tax planning, you may find yourself considering special one-time donations. There is a growing trend among donors to make contributions to their favorite organizations via the web as they prepare their taxes. As you contemplate your tax-deductible donations, please keep First Lutheran in mind. You can make a one-time, tax-deductible, donation on our website at 1stlu.org/give.



The following is a financial summary through the end of January:

Actual Receipts -
\$49,730.80

Budgeted Receipts -
\$49,550.00

Actual Expenses -
\$59,714.43

Budgeted Expenses -
\$66,088.00

Our total receipts through the end of January exceeded the current year budgeted amount by \$180.80. Our total giving (general fund and other miscellaneous offerings) fell short of our current year budgeted amount by \$389.58 or .9%. In addition, our total receipts through the end of January

exceeded our total receipts through the same period last year by \$986.45.

As noted above, our expenses are less than budgeted through the end of January by \$6,373.57. The majority of this favorable variance is due to the timing of certain expenses.

In summary, we budgeted for a deficit of \$16,538.00 through the end of January and have realized an actual deficit of \$9,983.63.

In addition to the above noted operating receipts and expenses, we received \$16,167.61 for our capital campaign in January and incurred expenses associated with our capital campaign of \$3,921.91. Cumulative receipts and expenses associated with our capital campaign through the

end of January are \$241,267.04 and \$118,751.23, respectively.

As always, full details of this report are available by request in the church office. Also, everyone is welcome to attend a finance committee meeting—we meet every month, on the second Wednesday at noon in the Thomas Room.

*Respectfully,
Finance Committee*

CATEGORY #4 - CAPITAL IMPROVEMENTS

First Lutheran General Fund \$3,000

The Foundation/Endowment Fund was established in December 1989 upon the passing of Ms. Mabel L. Anderson. Mabel was a longtime member of First Lutheran, having been baptized and confirmed here. Her will/trust bequest a substantial sum to First Lutheran in memory of her parents Peder and Johanna Anderson. It was Mabel's wish that this monetary gift would enable further growth of our church, its ministries and stewardship within the community.

Per the Foundation's bylaws, 5% of its total assets can be spent each year towards four categories: 1) Mabel Anderson Scholarships (for graduating high school seniors); 2) community outreach, such as Salvation Army, local food pantries, and New Horizons; 3) ELCA-related missions, such as Sugar Creek Bible Camp, First Lutheran Helping Hands, and youth trips; and 4) capital improvements for First Lutheran. In the past 4-5 years, the Foundation has graciously donated more than \$10,000 towards these four categories.

Contributions to the Foundation Fund are not spent, but invested. The money is held in a couple of low-risk investment funds and money market accounts. Year after year the interest earned from this fund is used to expand our outreach and ministries. Therefore, contributions made to the fund serve as "seeds" that keep on giving. Contributions may be made through simple gifts, wills & trusts via estate planning, memorials and beneficiary through life insurance policies. Any amount is welcome and greatly appreciated.

Committee members: Christine Sander, Michele Burton, Steve Lind, Meredith Hougen, Andrea Dombroski and Todd Hanson



GO AND DO
LIKEWISE LUKE 10:37

SUNSHINE BOYS

The Sunshine Boys meet at First Lutheran on the **first Thursday of the month at 9am** to help with outdoor or indoor projects. Rolls and coffee are supplied to replenish your reserves! Dues are free!

COME FOR SUPPER

First Lutheran is assisting with Come for Supper on **Tuesday, March 27**, at Our Savior's in La Crosse. First Lutheran will help with food donations and volunteering to serve and clean up. The sign-up sheets are at the Welcome Center. Call Gloria Kubiak if you have questions, 608.498.2762.

NEWSLETTER ASSEMBLY

It's a relaxing way to volunteer! **Wednesday, March 28, at 9am**, to assemble the April newsletter. See you there!

HELPING HANDS

If you need help with small jobs around the house or if you need a couple of meals or groceries delivered, just go to the "Helping Hands" board by the nursery and make out a slip with a description of what you need help with and your telephone number. Then anyone who thinks they can help can take the slip and call the number to work out the details. This ministry is open to all in need of help AND to

those who can provide the help. There is no set group of "helpers" so we need involvement from all who can be a blessing to someone else. Thanks!

WELCOME BASKETS

Welcome baskets are a way to welcome a new neighbor into your neighborhood. The baskets are a gift bag tied with a bow and are filled with goodies from church and from our community. They are available to sign out at the Resource Center across from the church office.



If you know of someone who needs a caregiver, speak with Pastor Karyn (karyn@firstlu.org) or call the church office (608.783.2236).

MESSAGE FROM PRESIDING BISHOP EATON

Feb. 16, 2018

A voice was heard in Ramah, wailing and loud lamentation, Rachel weeping for her children; she refused to be consoled because they are no more (Matthew 2:18).

As we live into these first days and weeks of Lent, we do so riveted by the news of another tragic mass shooting, this time at Marjory Stoneman Douglas High School in Parkland, Fla., on Ash Wednesday. My heart, like yours, is filled with anguish; my spirit, like yours, laments. Rachel weeps for her children, refusing to be consoled because they are no more, and so do we.

We pray for the inconsolable loved ones and for the shooter and his family, for those terrorized by what took place and those who are unmoved. We acknowledge our own failings and ask God to guide us in finding new ways to turn the tide together on both the availability of assault weapons *and* the lack of mental health care.

But we know that those things alone won't solve this epidemic. All of us, including the church, must take a close look at ourselves. How are we cultivating a culture of violence, hatred, anger and fear, and how can we participate in building a counter-culture where people can experience God's intended peace and life abundant for all?

Lent is a time for lamentation, dwelling with our sorrow, and facing the painful reality of death. We take each step certain that God weeps with us, walks with us in our deepest sufferings, and in the end makes the ultimate sacrifice for us – through death on a cross. This is our strength for the journey.

A prayer offered by Bishop Pedro Suárez, Florida-Bahamas Synod:

Dear loving God,

There are so many things we don't understand about our world. We might not know how the families and friends of the victims of today's shooting are feeling. But we do care. May they feel your presence in spirit through those that are accompanying them right now.

Help us to be mindful of the pain around us and to do something about it. We pray this in the name of our Lord and Savior, Jesus Christ, who lives with you and the Holy Spirit, one God, now and forever. Amen.

God's peace,



The Rev. Elizabeth A. Eaton
Presiding Bishop
Evangelical Lutheran Church in America

FIRST TEEN CLOTHES OPEN HOUSE



Have you ever visited our Clothes Closet? Or even been inside "the house"—which is used for other ministries and groups, as well? Here's your chance to take a peek and learn more about what we do.

The First Teen Clothes Closet committee will host open houses for congregation members twice in March:

- **7pm Wednesday, March 14,** after the Lenten service
- **9:15-10:15am Sunday, March 18,** between services

Come learn more about:

- What we provide for our guests
- Where our guests come from
- What a visit looks like
- How we sort and organize donations
- What collaborative efforts allow us to join forces with other ministries in the community

We would love to share with all of you the good work that this ministry can do, thanks to your support, and answer any questions you have.

First Teen Clothes Closet team,

*Lori Lunney
Shari Hegland
Bridget Crave
Patty Shepard*

firstlu.org/1stteencloset
facebook.com/1stteencloset
instagram.com/1stteencloset
closet@firstlu.org

BAPTISMAL PREPARATION



A baptism preparation session will be **Saturday, April 7, at 10am** in the narthex for anyone who is considering or has scheduled a baptism.

To register or ask questions call the church office, 608.783.3326.

NEW-MEMBER SMALL GROUP

By choosing to become a member, individuals and families commit to being part of a shared mission. People who would like to become members of First Lutheran are invited to a three-week introduction to the church, presented in a small-group setting. The group will meet in the evening on **Sunday, Apr. 15 & 22, and Thursday, Apr. 26**. To register your family or ask questions, call our church office at 608.783.2236 or email office@firstlu.org.

CANCELLATIONS DUE TO INCLEMENT WEATHER

If the weather ever makes you wonder whether your group is meeting for their ministry, check our website, Facebook page, or update the office with your cell # and provider so that we can text you. We'll also notify WXOW.com, news8000.com and the La Crosse Radio Group stations: 106.3, 104.9, 102.7, 100.1, and 1490 AM. The staff and leadership of First intend to 'make the call' by 5pm at the latest so everyone knows what to expect. Be safe this winter!

WE CELEBRATE THE GIFT OF HOLY BAPTISM

- Miles David Brown

CHRISTIAN SYMPATHY TO THE FAMILY & FRIENDS OF:

- Delores Teale

GIFTS AND MEMORIALS

Thank you for the following memorials:

In memory of Delores Teale

- Capital Campaign: Ardie Van Riper
- First Lutheran Foundation: Susan Hickman, Gloria Kubiak, Sue Lackey, Peggy Quasius

In memory of Alice Kramer

- Undesignated: David & Dorine Bolterman, Robert & Doris Witherow

HOSPITAL REMINDERS

For Gundersen: be sure to alert the hospital of your church affiliation when they ask, and they will release your name to us when we call.

For Mayo/Franciscan Healthcare:

it is important that you or a family member contact us at the church office: 608.783.2236. Mayo no longer lets churches know who is a patient at their hospital.

SUBMITTING NEW ANNOUNCEMENTS

To have your announcement in the monthly newsletter, send it to newsletter@firstlu.org, or give it to Andy in the office. Deadline for the newsletter is always noon on the 15th of each month.

To have your announcement in the weekly announcements pages handed out each weekend, send it to announcements@firstlu.org, or give it to Andy in the office. Deadline for the weekly announcements is always noon each Wednesday.

NEW MEMBERS

I rejoiced with those who said to me, "Let us go to the house of the LORD."

- Tim & Jenny Knudson, Emma and Signe
- Terry & Sarah Long, Liliana and Harper

Grief Support Group

Carrying on after the death of a loved one can be difficult and lonely. Join with others who have experienced loss, and listen and care for each other.

Meeting the **third Thursday of the month**, 1pm in the Upper Room.

More info at 1stlu.org/griefgroup

OWLS

OLDER WISER LUTHERANS

The winter cold did not keep the OWLs at home in February. A lively group of 21 ventured to the Outback for a delicious dinner followed by grooving at a Simon and Garfunkel tribute band concert at the Heider Center. A good time was had by all!

March promises to be another month of good food and good times. We will start the month with our Potluck on **Wednesday, March 14**. That is one week earlier than usual due to Brian and Mary's travel schedule. Since our potluck is in Lent, we will once again provide lunch for the morning worshipers. Please bring a little extra to share. Our program will be by a loved and familiar couple. Pastor Ron Nowland and Frieda will present a program on "SALT." Do you know how many times salt is mentioned in the Bible? How about how salt is used as a spiritual reference? Ron and Frieda always provide a fun and interesting program. On March 15th we will meet in the Narthex for lunch after worship, and then head to Fellowship Hall so Ron can use the



projector and mic. Don't miss this inspiring program.

Our March outing will be a trip back in space and time. We will travel to Sparta to visit the Monroe County History Museum and the Deke Slayton Space and Bicycle Museum, which happen to be in the same building. The Monroe County Museum offers history exhibits and special programs. Permanent exhibits and changing displays illustrate past lives and experiences of Monroe County people, pioneer history, agriculture, military history, industry, business and the home. The Deke Slayton Museum is a "Progression of Transportation" with artifacts ranging from bicycles to planes to space memorabilia. Sparta is the bicycling capital of America. The museum has over 100 bicycles on display that span the history of bicycling throughout the centuries. They also have dozens of model planes, including a model of the Wright Brothers' first plane and a real 1932 Pietenpol airplane hanging from the ceiling

of the museum gallery. The collection of space memorabilia includes artifacts (even a moon rock) from Sparta native Deke Slayton who was one of America's first astronauts. The history museum is on the ground floor and the Deke Slayton is up one flight of stairs. We will have a guided tour of the Deke Slayton Museum. After the museums, we will have scrumptious lunch at a local restaurant. We will leave the church at **9:30am on Monday, March 19**. Cost of the Deke Slayton Museum is \$5, lunch is on your own. We will be back at the church before 3pm. Please contact Brian Narveson at owls@firstlu.org or 608-526-9700 by noon Sunday, March 18, if you plan to attend.

Looking forward to seeing everyone in March.

*The OWLs are a group at First that welcomes anyone, First Lutheran members or not, who are 55+.
For information or to ask questions, contact
Brian Narveson at owls@firstlu.org.*



PRESCHOOL

UPDATE

It's First Lutheran Preschool registration time! If your children are ready for preschool or you know someone with preschool age children, please consider the amazing preschool right here at First Lutheran. We are passionate about early childhood education! We've worked hard to develop a rich curriculum that makes learning fun as well as offer a variety of classes to meet our parents' needs. Contact us today for more information. Better yet - attend our open house and see for yourself!

Open house is **March 8, 4:30-5:30pm.**

Preschool registration is **March 12, 8:30-9:30am** for previously enrolled families, **9:30-10:30am** for church members and **10:30am-noon** for the community.

Call or email us today for more information!

Relissa



What parents are saying about First Lutheran Preschool...

The staff at First Lutheran Preschool truly loves on our kiddos everyday. The curriculum is full of precious crafts and keepsakes and my boys have loved their time there. We have been so thankful for our experience here at First Lutheran Preschool.

First Lutheran Preschool

410 Main Street, Onalaska, WI 54650
608.779.4504 • preschool@firstlu.org
Preschool Director: Melissa Rolbiecki
4K Teacher: Beth Miller
Preschool Assistant Teachers:
Marci Leppert, Tracy Stoll

Sunday School

March

Sundays, Mar. 4, 11, 18, 9:15am: Sunday School

Palm Sunday, Mar. 25 : No Sunday School, and Frolic! does not meet
Easter Sunday, Apr. 1: No Sunday School

Faith Building Blocks

KINDERGARTEN: LORD'S PRAYER

Sundays, Mar. 4: parents/guardians with children

Sunday, Mar. 11: Faith Building Block lifted up in worship

GRADE 5: COMMUNION

Sundays, Mar. 11 & 18: parents/guardians with children

Wednesday, Mar. 28: children only, baking communion bread

Maundy Thursday, Mar. 29: Faith Building Block lifted up in worship

Throughout the year, each age group will have a special "Faith Building Block" session in which parents or special adults are asked to attend class with their child on Sundays at 9:15am, sharing in conversation and growing together in faith. The session lasts for three weeks, and afterwards, children will have a presence in worship in celebration of the Faith Building Block they have learned.

New registrations welcome any time of the year!

Contact Sunday School Superintendent Beth Miller at sundayschool@firstlu.org or stop in the Sunday School office in room 206.



YOUNG YOUTH

UPCOMING EVENTS

March 2, 6-8pm:
Grades K-2 MP3 night

March 23: Take a Walk (Through Holy Week)

- Grades K-2: 5pm-7pm
- Grades 3-5: 6:30-8pm

Come for a time to be with friends in a relaxed atmosphere, enjoy super together and a time for taking a walk through holy week!

RSVP for all of the above to beth@firstlu.org

DATES TO BE DETERMINED

Clean-Up our Parks
Random Acts of Kindness
Humane Society
Clearwater Farm
Game Night
(Intergenerational Event)

2018 SMALL GROUPS

Weekly Groups:

Coffee with
Pastor Karyn

Courageous Men

Knitters

Parent Share *(Sun & Tues)*

Quilters

Sunday Morning
with Coffee

Monthly Groups:

Drawing from the Well

Grief Support Group
*(date change: now meeting
on 3rd Thursdays)*

Frolic!

OWLs
(Older, Wiser Lutherans)

Deborah Circle

Dorcas Circle

Elizabeth Circle

Naomi Circle

Rebekah Circle



**Meets
Wednesdays
7pm
in the
Mary Room
Except during
Holy Week,
March 28**

CONFIRMATION

Teen-relevant, age-appropriate, active, modern, and theologically sound Events subject to change; up-to-date info at 1stlu.org/confirmation

UPCOMING CONFIRMATION EVENTS

Gr 6 & 7 Bible Classes
Sundays (9:15am),
except March 28

Gr 8 & 9 Small Groups
Wednesdays (7pm),
except March 28

**Spring Sugar Creek Middle
School Retreat (for Grade 8)**
Friday, March 16 through
Sunday, March 18

10 Commandments
Wednesdays (5:00-6:00pm),
March 7, 14

Holy Week Creative Team
Monday, March 19
(7:00-8:00pm)

Being Gifted
Sunday, March 4
(9:15-10:15am)

The Trinity
Sunday, March 11
(12:00-2:00pm)

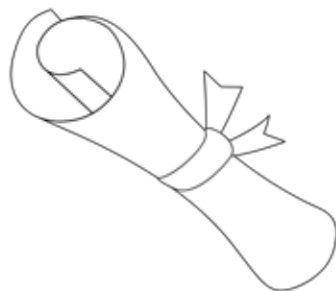


UPCOMING

Mabel Anderson Scholarship

Completed applications are due no later than **3pm on Monday, April 23.** Students may apply if they will graduate from high school in the spring and have plans to pursue post-secondary education. The application includes writing an essay and completing a worksheet that reflects the student's involvement in church activities. Application forms are available at 1stlu.org/scholarship or in the church office during office hours, M-F 8am-4pm.

YOUTH



Graduation Milestone and Recognition Dinner for Seniors

March 11, 6–8pm

Seniors and parents are invited to come celebrate all the hard work our seniors have put into school.

We want to celebrate their achievements with a dinner and time of blessing.

RSVP at 1stlu.org/grads

EVENTS



PALM SUNDAY BREAKFAST

Sunday, March 25, 9–10:30am

Sign-up sheets available
late March

HIGH SCHOOL YOUTH GROUP!

Weekly on Sunday nights during the school year, 6:30–8:30pm, in the Mary room. Come to youth group and find friends, fellowship, and modern worship music. We play games, dive into scripture, and challenge each other to grow in our faith. Come whenever you can and bring some friends along too!



Contact Jared with any questions:
jared@firstlu.org / 605.431.3421

MARCH AT FIRST LUTHERAN *see also weekly events list on back*

Sunday	Monday	Tuesday	Wednesday	Thursday	Friday	Saturday
<div> <div>FEBRUARY</div> <div> <div>1 2 3</div> <div>4 5 6 7 8 9 10</div> <div>11 12 13 14 15 16 17</div> <div>18 19 20 21 22 23 24</div> <div>25 26 27 28</div> </div> </div>	<div> <div>APRIL</div> <div> <div>1 2 3 4 5 6 7</div> <div>8 9 10 11 12 13 14</div> <div>15 16 17 18 19 20 21</div> <div>22 23 24 25 26 27 28</div> <div>29 30</div> </div> </div>	<div>27</div> <div> 9 AM Quilting - FS 6:30 PM Stephen Ministry Mtg - MR 6:30 PM Lenten Small Group - UR </div>	<div>28</div> <div> 5 PM 10 Commandments Cnfrm Cls 7 PM Lenten Small Group - UR </div>	<div>1</div> <div> 9 AM Sunshine Boys 11 AM Lenten Small Group - House 7 PM Lenten Small Group - House </div>	<div>2</div> <div> 6 PM Young Youth MP3 Night, Gr K-2 7 PM AA - FH </div>	<div>3</div>
<div>4</div> <div> 9:15 AM Being Gifted Cnfrm Cls 9:15 AM Kindergarten FBB: Lord's Prayer 11:45 AM Cap Cmpgn Steering Cmte 12 PM MS Youth Group - FH 6 PM Financial Peace University - FS 6:30 PM Lenten Sml Grp - Davidson's Home </div>	<div>5</div> <div> 6 PM Cake Pops Class 6 PM Stephen Ministry Class - MR 7 PM AA - FS </div>	<div>6</div> <div> 9 AM Quilting - FS 6:30 PM Lenten Small Group - UR </div>	<div>7</div> <div> 5 PM 10 Commandments Cnfrm Cls 7 PM Lenten Small Group - UR 8 PM Praise Band Rehearsal - SN </div>	<div>8</div> <div> 11 AM Lenten Small Group - House 4:30 PM Preschool Open House 7 PM Lenten Small Group - House </div>	<div>9</div> <div> 7 PM AA - FS </div>	<div>10</div> <div> <div>Daylight Savings Begins Tonight! 🕒</div> <div>High School Retreat - First Lutheran</div> 8:30 AM Drawing from the Well Group - FS </div>
<div>11</div> <div> <div>Kindergarten FBB: Lord's Prayer, lifted up...</div> 9:15 AM Gr 5 FBB: Communion 9:15 AM Internship Committee - House 12 PM The Trinity Cnfrm Cls 6 PM Grad Milestone Recog Dinner 6 PM Financial Peace University - FS 6:30 PM Lenten Sml Grp - </div>	<div>12</div> <div> 9:30 AM Preschool Reg: opens to church members 6 PM Stephen Ministry Class - MR 7 PM AA - FS 7:30 PM OHS Choir Concert </div>	<div>13</div> <div> 9 AM Quilting - FS 1 PM Dorcas Circle - NX 3:45 PM Worship & Music Team - NX 6:30 PM Stephen Ministry Mtg - MR 6:30 PM Lenten Small Group - UR 7 PM Coffee Shoppers Quarterly Meeting </div>	<div>14</div> <div> 12 PM OWLs Potluck - NX 12 PM Finance Team Mtg 5 PM 10 Commandments Cnfrm Cls 7 PM Small Group Book Study 7 PM Clothes Closet Open House 7 PM Lenten Small Group - UR </div>	<div>15</div> <div> <div>Newsletter Deadline</div> 10 AM Deborah's Circle - NX 11 AM Lenten Small Group - House 1 PM Grief Support Group - UR 7 PM Lenten Small Group - House </div>	<div>16</div> <div> <div>Sugar Creek Middle School Retreat 🌲</div> 7 PM AA - FS </div>	<div>17</div>
<div>18</div> <div> <div>Sugar Creek Middle School Retreat 🌲</div> 9:15 AM First Teen Clothes Closet Open House 9:15 AM Gr 5 FBB: Communion 11:45 AM Cap Cmpgn Steering Cmte 6 PM Financial Peace University - FS 6:30 PM Lenten Sml Grp - </div>	<div>19</div> <div> 9:30 AM OWLs Fly to Sparta 1 PM Elizabeth Circle 6 PM Stephen Ministry Class - MR 7 PM AA - FS 7 PM Holy Week Creative Team Cnfrm Cls </div>	<div>20</div> <div> 9 AM Quilting - FS 9 AM Naomi's Circle 5:15 PM Personnel Team Mtg 6:30 PM Lenten Small Group - UR 6:30 PM Property Mngment Team 6:30 PM Vision & Leadership Team Mtg </div>	<div>21</div> <div> 7 PM Lenten Small Group - UR </div>	<div>22</div> <div> 11 AM Lenten Small Group - House 7 PM Lenten Small Group - House </div>	<div>23</div> <div> 5 PM Take a Walk (Through Holy Week), Gr K-2 6:30 PM Take a Walk (Through Holy Week), Gr 3-5 7 PM AA - FS </div>	<div>24</div>
<div>25</div> <div> <div>No Sunday School & Confirmation</div> <div>Palm Sunday</div> 8 AM Palm Sunday Breakfast 6 PM Financial Peace University - FS </div>	<div>26</div> <div> 6 PM Stephen Ministry Class - MR 6:30 PM Holy Week Worship 🏹 7 PM AA - FS </div>	<div>27</div> <div> 9 AM Quilting - FS 4 PM Come for Supper at OSLC 6:30 PM Stephen Ministry Mtg - MR 6:30 PM Holy Week Worship 🏹 </div>	<div>28</div> <div> 9 AM Newsletter Assembly - NX 4 PM Gr 5 FBB: Communion (bread baking, child only) 6:30 PM Holy Week Worship 🏹 8 PM Praise Band Rehearsal - SN </div>	<div>29</div> <div> <div>Gr 5 FBB: Communion, lifted up in worship</div> <div>Maundy Thursday</div> 12:15 PM Maundy Thur Worship 🏹 6:30 PM Maundy Thur Worship 🏹 </div>	<div>30</div> <div> <div>Good Friday</div> 10 AM Justice & Peace Stations of the Cross 12:15 PM Good Friday Worship 🏹 6:30 PM Good Friday Worship 🏹 7 PM AA - FS </div>	<div>31</div> <div> 6:30 PM Sacred Storytelling Worship 🏹 </div>

weekly events for
MARCH
at First Lutheran

SUNDAYS

8:00am Worship

9:15am Sunday School &
Gr 6 & 7 Bible Classes,
except Sun, March 25

9:15am Sun Morning w/ Coffee
Small Group - NX,
except Sun, March 25

9:15am ParentShare - UR,
except Sun, March 25

10:30am Worship

6:30pm High School Youth Group

TUESDAYS

8:30am ParentShare - UR

1:15pm Staff Meeting

5:30pm Bells Practice - Sacristy

WEDNESDAYS

6:00am Courageous Men - FS

6:30am Coffee w/ Pastor Karyn -
Panera, Onalaska

11:00am Lenten Worship followed by
light lunch, except Wed, March 28

6:15pm Worship

7pm Gr 8 & 9 Small Groups
& Peer Ministry,
except Wed, March 28

7pm Choir Practice - SN

THURSDAYS

7pm Women of the House



Cake Pops Class
Mon, March 5
6–8pm



Preschool Open
House
Thur, March 8
4:30–5:30pm



Graduation
Milestone
Sun, March 11
6–8pm



Clothes Closet
Open House
Wed, March 14
7pm



Clothes Closet
Open House
Sun, March 18
9:15am

CALENDAR KEY

CR = Choir Room

FBB = Faith Building Block

FH = Fellowship Hall

FS = Fireside Room

LG = Lounge

MR = Mary Room

NX = Narthex

SN = Sanctuary

TR = Thomas Room

UR = Upper Room

*Events subject to change; up-to-date
information at 1stlu.org/cal*

*Subscribe to our Google calendar at
1stlu.org/calsub*

*Use the QR Codes to quickly add these
events to the calendar of your smart
phone or tablet.*

*Tips: focus the code, hold the device still,
try various distances, & use good lighting.
Need a scanning app?
Try www.scan.me.*



410 Main St.
Onalaska, Wisconsin 54650
608.783.2236
Fax: 608.783.3741
office@firstlu.org
www.FirstLutheranOnalaska.org

WORSHIP SCHEDULE

Sunday 8:00 & 10:30 AM
Wednesday 6:15 PM

SUBMITTING NEW ANNOUNCEMENTS

To have your announcement in the monthly newsletter, send it to newsletter@firstlu.org, or give it to Andy in the office. Deadline for the newsletter is always noon on the 15th of the month.

To have your announcement in the weekly announcements pages handed out each weekend, send it to announcements@firstlu.org, or give it to Andy in the office. Deadline for the weekly announcements is always noon each Wednesday.

First Lutheran is a congregation of the
Evangelical Lutheran Church of America (ELCA)



STAFF DIRECTORY

Jason Stanton	Senior Pastor	608.386.6431	jason@firstlu.org
Karyn Bodenschatz	Associate Pastor	608.433.6002	karyn@firstlu.org
Tara Shilts	Vicar		tara@firstlu.org

Bridget Crave	Director of Small Group Ministry	bridget@firstlu.org
Kathryn Pedretti	Director of Hospitality	kathryn@firstlu.org

YOUTH/EDUCATION STAFF

Cassie Carrell	Nursery Coordinator	nursery@firstlu.org
Beth Miller	Sunday School Superintendent	sundayschool@firstlu.org
	Young Youth Director	beth@firstlu.org
Cindy Beach	Confirmation Administrative Assistant	cindy@firstlu.org
Jared Oelke	Youth Director	jared@firstlu.org

SUPPORT STAFF

Tamara Schonsberg	Office Assistant	608.783.2236	office@firstlu.org
Andy Stutesman	Director of Communications & Marketing		andy@firstlu.org
Mike Peper	Head Custodian		mike@firstlu.org
Jerry Yushta	Assistant Custodian		
Mark Koenig	Assistant Custodian		

MUSIC STAFF

Gabriel Hicks	Organist	gabe@firstlu.org
Jim Knutson	Bell Choir Director	jim@firstlu.org
Todd Saner	Senior Choir Director & Contemporary Music Coordinator	todd@firstlu.org

PRESCHOOL STAFF

Melissa Rolbiecki	Preschool Director	608.779.4504	preschool@firstlu.org
Beth Miller	4K Teacher		beth@firstlu.org
Marci Leppert	Preschool Assistant Teacher		
Tracy Stoll	Preschool Assistant Teacher		

VISION & LEADERSHIP TEAM

Larry Schreiner	President
Aaron McDonald	Vice President
Jennifer Wiesjahn	Secretary
Diane Shuda	
Paula Skoy	
Shaun Gibbs	
Todd Lofald	



410 Main Street
Onalaska, WI 54650
608.783.2236
www.FirstLutheranOnalaska.org

WORSHIP SCHEDULE

Sunday 8:00 AM
10:30 AM
Wednesday 6:15 PM



Scan to download
this newsletter to
your smart phone
or tablet



Go green!
Scan to subscribe
to the newsletter
online



Evangelical Lutheran
Church in America
God's work. Our hands.
edition: March 2018

NON PROFIT ORG
POSTAGE PAID
ONALASKA, WI
PERMIT #15

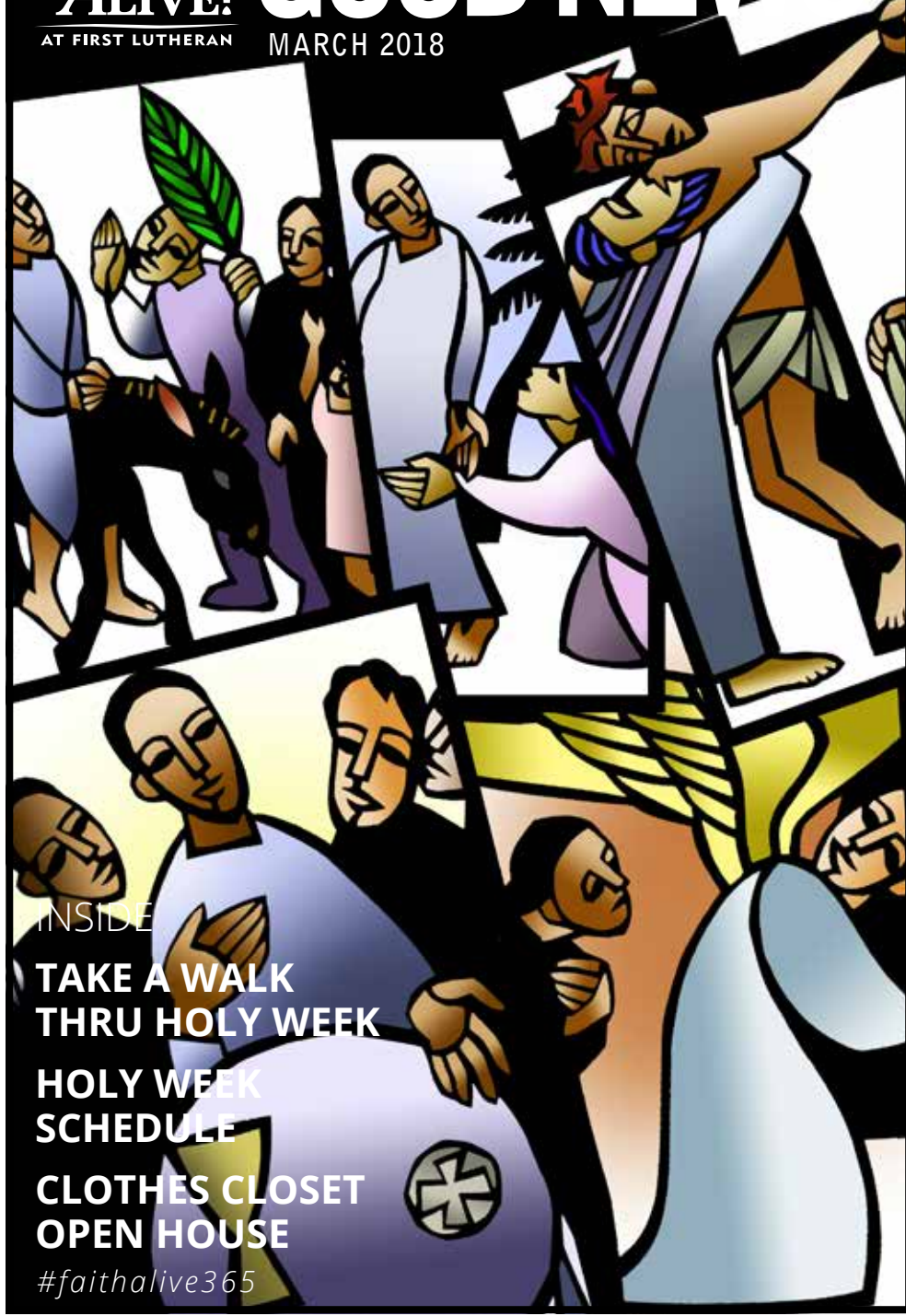
ADDRESS SERVICE REQUESTED

To stop delivery: email andy@firstlu.org or call office at 608.783.2236

**FAITH
ALIVE!**
AT FIRST LUTHERAN

GOOD NEWS

MARCH 2018



INSIDE

**TAKE A WALK
THRU HOLY WEEK
HOLY WEEK
SCHEDULE
CLOTHES CLOSET
OPEN HOUSE**

#faithalive365